

For Research Use Only

ALPL Recombinant antibody, PBS Only



Catalog Number:82915-2-PBS

Basic Information

Catalog Number:

82915-2-PBS

Size:

100ug , Concentration: 1mg/ml by Nanodrop;

Source:

Rabbit

Isotype:

IgG

Immunogen Catalog Number:

AG1664

GenBank Accession Number:

BC021289

GeneID (NCBI):

249

UNIPROT ID:

P05186

Full Name:

alkaline phosphatase, liver/bone/kidney

Calculated MW:

57 kDa

Purification Method:

Protein A purification

CloneNo.:

230212D5

Applications

Tested Applications:

Indirect ELISA, WB

Species Specificity:

human

Storage

Storage:

Store at -80°C.

Storage Buffer:

PBS Only

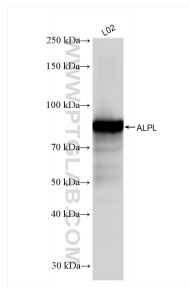
For technical support and original validation data for this product please contact:

T: 1 (888) 4PTGLAB (1-888-478-4522) (toll free in USA), or 1(312) 455-8498 (outside USA)

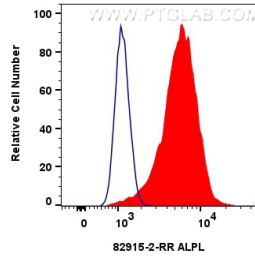
E: proteintech@ptglab.com
W: ptglab.com

This product is exclusively available under Proteintech Group brand and is not available to purchase from any other manufacturer.

Selected Validation Data



L02 cells were subjected to SDS PAGE followed by western blot with 82915-2-RR (ALPL antibody) at dilution of 1:10000 incubated at room temperature for 1.5 hours. This data was developed using the same antibody clone with 82915-2-PBS in a different storage buffer formulation.



1×10^6 HeLa cells were intracellularly stained with 0.25 ug ALPL Recombinant antibody (82915-2-RR, Clone:230212D5) and CoraLite®488-Conjugated AffiniPure Goat Anti-Rabbit IgG(H+L) (SA00013-2) (red), or 0.25 ug Isotype Control (blue). Cells were fixed with 4% PFA and permeabilized with Flow Cytometry Perm Buffer (PF00011-C). This data was developed using the same antibody clone with 82915-2-PBS in a different storage buffer formulation.