

For Research Use Only

SEC24A Recombinant antibody, PBS Only



Catalog Number: 82908-1-PBS

Basic Information

Catalog Number: 82908-1-PBS	GenBank Accession Number: BC019341	Purification Method: Protein A purification
Size: 100ug, Concentration: 1mg/ml by Nanodrop;	GeneID (NCBI): 10802	CloneNo.: 230105B3
Source: Rabbit	UNIPROT ID: O95486	
Isotype: IgG	Full Name: SEC24 family, member A (S. cerevisiae)	
Immunogen Catalog Number: AG8723	Calculated MW: 613 aa, 66 kDa	
	Observed MW: 120 kDa	

Applications

Tested Applications:
Indirect ELISA, IF/ICC, WB

Species Specificity:
human

Background Information

COPII-coated vesicles mediate anterograde transport from the ER to the Golgi apparatus. COPII is composed of three parts: two coat protein complexes (Sec23/24 complex and Sec13/31 complex) and one small GTP-binding protein, Sar1 (PMID: 9568718). Sec24 subunit of the coat complex has been implicated in cargo recognition (PMID: 17316621). In mammal cells, there are four Sec24 isoforms, termed Sec24A, Sec24B, Sec24C, and Sec24D (PMID: 10329445). This antibody is specific to SEC24A.

Storage

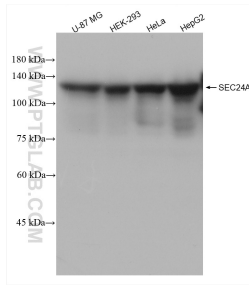
Storage:
Store at -80°C.

Storage Buffer:
PBS Only

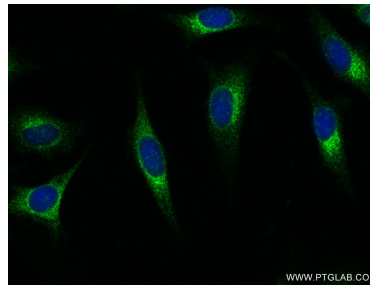
For technical support and original validation data for this product please contact:
T: 1 (888) 4PTGLAB (1-888-478-4522) (toll free in USA), or 1(312) 455-8498 (outside USA) E: proteintech@ptglab.com
W: ptglab.com

This product is exclusively available under Proteintech Group brand and is not available to purchase from any other manufacturer.

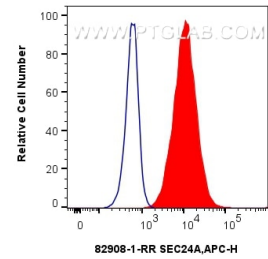
Selected Validation Data



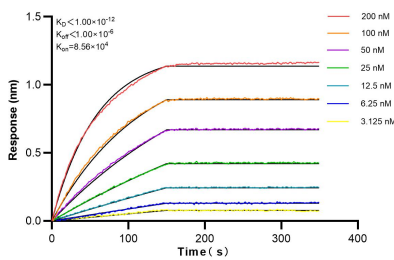
Various lysates were subjected to SDS PAGE followed by western blot with 82908-1-RR (SEC24A antibody) at dilution of 1:2500 incubated at room temperature for 1.5 hours. This data was developed using the same antibody clone with 82908-1-PBS in a different storage buffer formulation.



Immunofluorescent analysis of (-20°C Ethanol) fixed HeLa cells using SEC24A antibody (82908-1-RR, Clone: 230105B3) at dilution of 1:250 and CoraLite®488-Conjugated AffiniPure Goat Anti-Rabbit IgG(H+L) (SA00013-2). This data was developed using the same antibody clone with 82908-1-PBS in a different storage buffer formulation.



1x10⁶ HepG2 cells were intracellularly stained with 0.25 ug Anti-Human SEC24A (82908-1-RR, Clone:230105B3) and APC-Conjugated AffiniPure Goat Anti-Rabbit IgG(H+L) at dilution 1:166 (red), or 0.25 ug Rabbit IgG control Rabbit PolyAb (30000-O-AP, Clone:) (blue). Cells were fixed with 4% PFA and permeabilized with Flow Cytometry Perm Buffer (PF00011-C). This data was developed using the same antibody clone with 82908-1-PBS in a different storage buffer formulation.



Bi-layer interferometry (BLI) kinetic assays of 82908-1-RR against Human SEC24A were performed. The affinity constant is below 1 pM.