

For Research Use Only

# Synaptophysin Recombinant antibody, PBS Only

Catalog Number: 82900-1-PBS



## Basic Information

<b>Catalog Number:</b> 82900-1-PBS	<b>GenBank Accession Number:</b> BC064550	<b>Purification Method:</b> Protein A purification
<b>Size:</b> 100ug , Concentration: 1mg/ml by Nanodrop;	<b>GeneID (NCBI):</b> 6855	<b>CloneNo.:</b> 2H14
<b>Source:</b> Rabbit	<b>UNIPROT ID:</b> P08247	
<b>Isotype:</b> IgG	<b>Full Name:</b> synaptophysin	
<b>Immunogen Catalog Number:</b> AG11781	<b>Calculated MW:</b> 313 aa, 34 kDa	
	<b>Observed MW:</b> 38-40 kDa	

## Applications

**Tested Applications:**  
WB, IHC, IF/ICC, IF-P, FC (Intra), IP, Indirect ELISA

**Species Specificity:**  
human, mouse, rat

## Background Information

Synaptophysin (SYP, also known as major synaptic vesicle protein p38) is a 38-kDa integral membrane glycoprotein that regulates synaptic vesicle endocytosis. It is the most abundant synaptic vesicle protein by mass. Synaptophysin is present in neuroendocrine cells and neurons that participate in synaptic transmission. Synaptophysin is a useful marker for identification of neuroendocrine cells and neoplasms. (PMID: 3010302; 21658579)

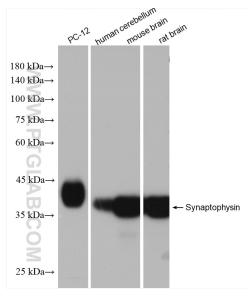
## Storage

**Storage:**  
Store at -80°C.  
**Storage Buffer:**  
PBS Only

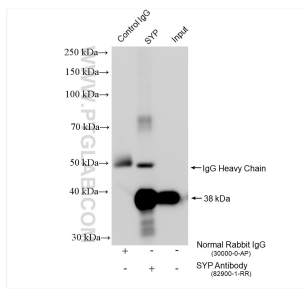
For technical support and original validation data for this product please contact:  
T: 1 (888) 4PTGLAB (1-888-478-4522) (toll free in USA), or 1(312) 455-8498 (outside USA)      E: proteintech@ptglab.com  
W: ptglab.com

This product is exclusively available under Proteintech Group brand and is not available to purchase from any other manufacturer.

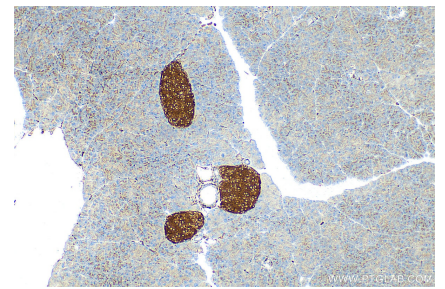
## Selected Validation Data



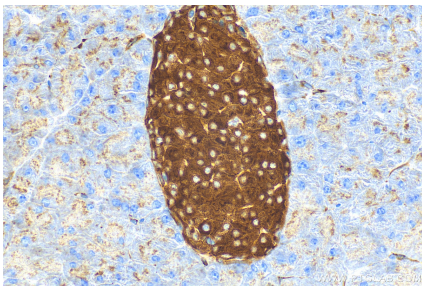
Various lysates were subjected to SDS PAGE followed by western blot with 82900-1-RR (Synaptophysin antibody) at dilution of 1:20000 incubated at room temperature for 1.5 hours. This data was developed using the same antibody clone with 82900-1-PBS in a different storage buffer formulation.



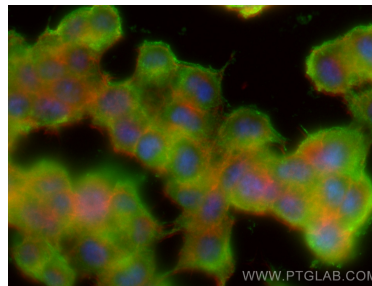
IP result of anti-Synaptophysin (IP:82900-1-RR, 4ug; Detection:82900-1-RR 1:5000) with mouse brain tissue lysate 1800 ug. This data was developed using the same antibody clone with 82900-1-PBS in a different storage buffer formulation.



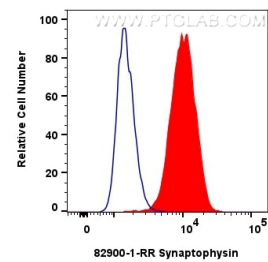
Immunohistochemical analysis of paraffin-embedded mouse pancreas tissue slide using 82900-1-RR (Synaptophysin antibody) at dilution of 1:1000 (under 10x lens). Heat mediated antigen retrieval with Tris-EDTA buffer (pH 9.0). This data was developed using the same antibody clone with 82900-1-PBS in a different storage buffer formulation.



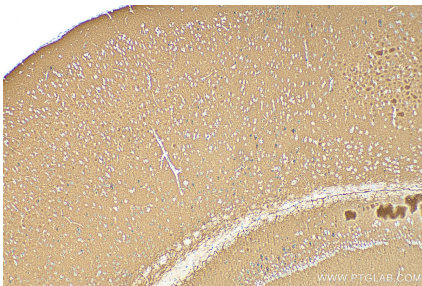
Immunohistochemical analysis of paraffin-embedded mouse pancreas tissue slide using 82900-1-RR (Synaptophysin antibody) at dilution of 1:1000 (under 40x lens). Heat mediated antigen retrieval with Tris-EDTA buffer (pH 9.0). This data was developed using the same antibody clone with 82900-1-PBS in a different storage buffer formulation.



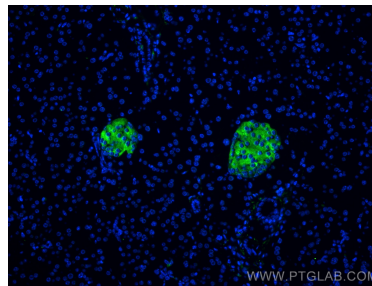
Immunofluorescent analysis of (-20°C Ethanol) fixed PC-12 cells using Synaptophysin antibody (82900-1-RR, Clone: 2H14) at dilution of 1:400 and Coralite® Plus 488-Goat Anti-Rabbit Recombinant Secondary Antibody (H+L) (RGAR002), CL594-Phalloidin (red). This data was developed using the same antibody clone with 82900-1-PBS in a different storage buffer formulation.



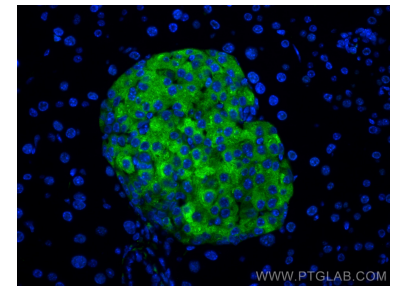
1x10<sup>6</sup> A549 cells were intracellularly stained with 0.25 ug Synaptophysin Recombinant antibody (82900-1-RR, Clone:2H14) and Coralite® 488-Conjugated AffiniPure Goat Anti-Rabbit IgG(H+L) (SA00013-2)(red), or 0.25 ug Isotype Control (blue). Cells were fixed and permeabilized with Transcription Factor Staining Buffer Kit (PF00011). This data was developed using the same antibody clone with 82900-1-PBS in a different storage buffer formulation.



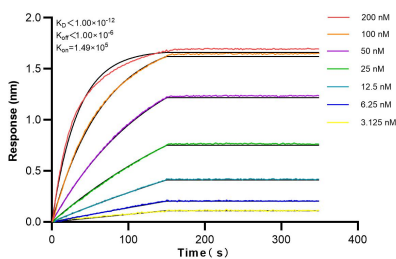
Immunohistochemical analysis of paraffin-embedded mouse brain tissue slide using 82900-1-RR (Synaptophysin antibody) at dilution of 1:1000 (under 10x lens). Heat mediated antigen retrieval with Tris-EDTA buffer (pH 9.0). This data was developed using the same antibody clone with 82900-1-PBS in a different storage buffer formulation.



Immunofluorescent analysis of (4% PFA) fixed paraffin-embedded mouse pancreas tissue using Synaptophysin antibody (82900-1-RR, Clone: 2H14) at dilution of 1:400 and Coralite® 488-Conjugated Goat Anti-Rabbit IgG(H+L) (SA00013-2). Heat mediated antigen retrieval with Tris-EDTA buffer (pH 9.0). This data was developed using the same antibody clone with 82900-1-PBS in a different storage buffer formulation.



Immunofluorescent analysis of (4% PFA) fixed paraffin-embedded mouse pancreas tissue using Synaptophysin antibody (82900-1-RR, Clone: 2H14) at dilution of 1:400 and Coralite® 488-Conjugated Goat Anti-Rabbit IgG(H+L) (SA00013-2). Heat mediated antigen retrieval with Tris-EDTA buffer (pH 9.0). This data was developed using the same antibody clone with 82900-1-PBS in a different storage buffer formulation.



Bi-layer interferometry (BLI) kinetic assays of 82900-1-RR against Human Synaptophysin were performed. The affinity constant is below 1 pM.