

For Research Use Only

RRBP1 Recombinant antibody, PBS Only



Catalog Number: 82890-1-PBS

Basic Information

Catalog Number: 82890-1-PBS	GenBank Accession Number: BC128577	Purification Method: Protein A purification
Size: 100ug , Concentration: 1mg/ml by Nanodrop;	GeneID (NCBI): 6238	CloneNo.: 230159G6
Source: Rabbit	UNIPROT ID: Q9P2E9	
Isotype: IgG	Full Name: ribosome binding protein 1 homolog 180kDa (dog)	
Immunogen Catalog Number: AG16648	Calculated MW: 1410 aa, 152 kDa	
	Observed MW: 108 kDa, 152 kDa	

Applications

Tested Applications:
Indirect ELISA, IF/ICC

Species Specificity:
mouse, human

Background Information

Ribosome-binding protein 1 (RRBP1) is an endoplasmic reticulum membrane protein. It is a 1410 amino acid protein composed of a hydrophobic NH2-terminus that includes a transmembrane domain, a highly conserved tandem repeat (ribosome-binding domain), and an acidic coiled-coil COOH-terminal domain. RRBP1 acts as a ribosome receptor and mediates interaction between the ribosome and the endoplasmic reticulum membrane. It is also involved in early cardiac morphogenesis. (PMID: 22709790; 8812507; 7686155)

Storage

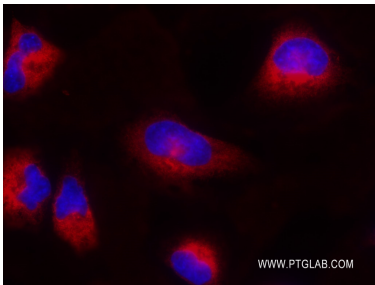
Storage:
Store at -80°C.

Storage Buffer:
PBS Only

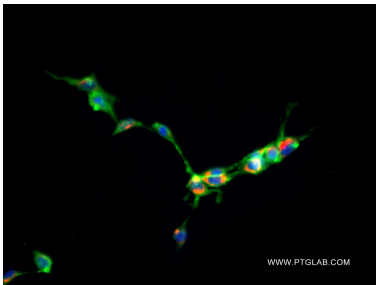
For technical support and original validation data for this product please contact:
T: 1 (888) 4PTGLAB (1-888-478-4522) (toll free in USA), or 1(312) 455-8498 (outside USA)
E: proteintech@ptglab.com
W: ptglab.com

This product is exclusively available under Proteintech Group brand and is not available to purchase from any other manufacturer.

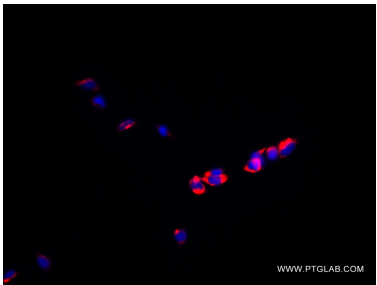
Selected Validation Data



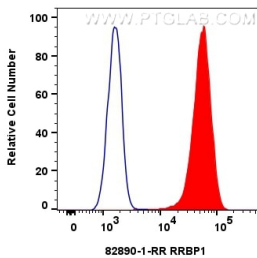
Immunofluorescent analysis of (4% PFA) fixed HeLa cells using RRBp1 antibody (82890-1-RR, Clone: 230159G6) at dilution of 1:1000 and Multi-rAb CoraLite® Plus 594-Goat Anti-Mouse Recombinant Secondary Antibody (H+L) (RGAM004). This data was developed using the same antibody clone with 82890-1-PBS in a different storage buffer formulation.



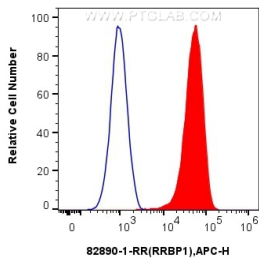
Immunofluorescent analysis of (4% PFA) fixed NIH/3T3 cells using RRBp1 antibody (82890-1-RR, Clone: 230159G6) at dilution of 1:1000 and Multi-rAb CoraLite® Plus 594-Goat Anti-Mouse Recombinant Secondary Antibody (H+L) (RGAM004). (CL488-Phalloidin, green). This data was developed using the same antibody clone with 82890-1-PBS in a different storage buffer formulation.



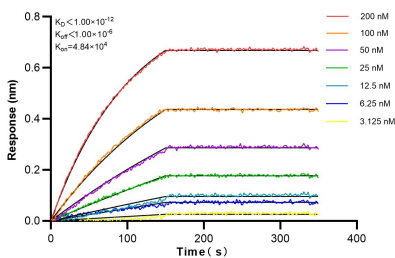
Immunofluorescent analysis of (4% PFA) fixed NIH/3T3 cells using RRBp1 antibody (82890-1-RR, Clone: 230159G6) at dilution of 1:1000 and Multi-rAb CoraLite® Plus 594-Goat Anti-Mouse Recombinant Secondary Antibody (H+L) (RGAM004). This data was developed using the same antibody clone with 82890-1-PBS in a different storage buffer formulation.



1x10⁶ HeLa cells were intracellularly stained with 0.25 ug RRBp1 Recombinant antibody (82890-1-RR, Clone:230159G6) and CoraLite®488-Conjugated AffiniPure Goat Anti-Rabbit IgG(H+L) (SA00013-2) (red), or 0.25 ug Isotype Control (blue). Cells were fixed with 4% PFA and permeabilized with Flow Cytometry Perm Buffer (PF00011-C). This data was developed using the same antibody clone with 82890-1-PBS in a different storage buffer formulation.



(blue)1x10⁶ U-2 OS were intracellularly stained with 0.25 ug Anti-Human RRBp1 (82890-1-RR, Clone:230159G6) and Alexa Fluor™ Plus 647-Conjugated AffiniPure Goat Anti-Rabbit IgG(H+L) at dilution 1:166(red), or 0.25 ug Rabbit IgG control Rabbit PolyAb (30000-O-AP). Cells were fixed with 4% PFA and permeabilized with Flow Cytometry Perm Buffer (PF00011-C). This data was developed using the same antibody clone with 82890-1-PBS in a different storage buffer formulation.



Bi-layer interferometry (BLI) kinetic assays of 82890-1-RR against Human RRBp1 were performed. The affinity constant is below 1 pM.