

For Research Use Only

Emerin Recombinant antibody

Catalog Number: 82888-3-RR

Featured Product



Basic Information

Catalog Number: 82888-3-RR	GenBank Accession Number: BC000738	Purification Method: Protein A purification
Size: 100ul , Concentration: 1000 ug/ml by Nanodrop;	GeneID (NCBI): 2010	CloneNo.: 230089B12
Source: Rabbit	UNIPROT ID: P50402	Recommended Dilutions: WB 1:5000-1:50000 IHC 1:200-1:800
Isotype: IgG	Full Name: emerin	
Immunogen Catalog Number: AG0236	Calculated MW: 34 kDa	
	Observed MW: 35 kDa	

Applications

Tested Applications:
WB, IHC, FC (Intra), ELISA

Species Specificity:
human

Note-IHC: suggested antigen retrieval with TE buffer pH 9.0; (*) Alternatively, antigen retrieval may be performed with citrate buffer pH 6.0

Positive Controls:

WB : HEK-293 cells, HeLa cells, Jurkat cells

IHC : human stomach cancer tissue,

Storage

Storage:
Store at -20°C. Stable for one year after shipment.
Storage Buffer:
PBS with 0.02% sodium azide and 50% glycerol pH 7.3.
Aliquoting is unnecessary for -20°C storage

*** 20ul sizes contain 0.1% BSA

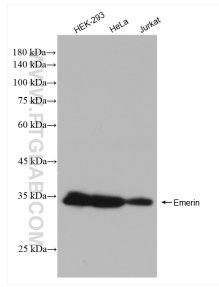
For technical support and original validation data for this product please contact:

T: 1 (888) 4PTGLAB (1-888-478-4522) (toll free in USA), or 1(312) 455-8498 (outside USA)

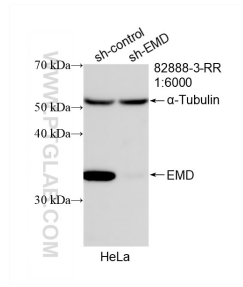
E: proteintech@ptglab.com
W: ptglab.com

This product is exclusively available under Proteintech Group brand and is not available to purchase from any other manufacturer.

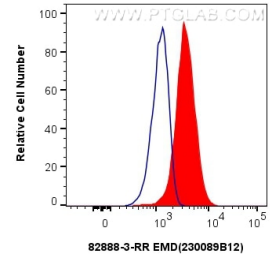
Selected Validation Data



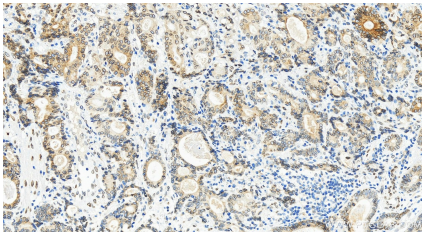
Various lysates were subjected to SDS PAGE followed by western blot with 82888-3-RR (Emerin antibody) at dilution of 1:10000 incubated at room temperature for 1.5 hours.



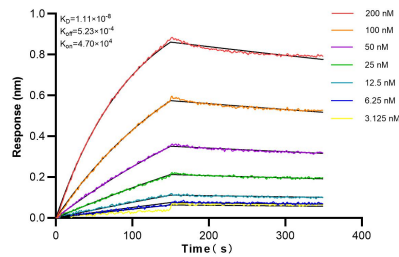
WB result of Emerin antibody (82888-3-RR; 1:6000; incubated at room temperature for 1.5 hours) with sh-Control and sh-Emerin transfected HeLa cells.



1×10^6 HeLa cells were intracellularly stained with 0.2 ug EMD Recombinant antibody (82888-3-RR, Clone:230089B12) and CoraLite@488-Conjugated AffiniPure Goat Anti-Rabbit IgG(H+L) (SA00013-2) (red), or 0.2 ug Rabbit IgG control Rabbit PolyAb (30000-0-AP) (blue). Cells were fixed with 4% PFA and permeabilized with Flow Cytometry Perm Buffer (PF00011-C).



Immunohistochemical analysis of paraffin-embedded human stomach cancer tissue slide using 82888-3-RR (Emerin antibody) at dilution of 1:400 (under 20x lens). Heat mediated antigen retrieval with Tris-EDTA buffer(pH9).



Biolayer interferometry (BLI) kinetic assays of 82888-3-RR against Human EMD were performed. The affinity constant is 11.1 nM.