

For Research Use Only

Emerin Recombinant antibody, PBS Only



Catalog Number: 82888-2-PBS

Basic Information

Catalog Number: 82888-2-PBS	GenBank Accession Number: BC000738	Purification Method: Protein A purification
Size: 100ug , Concentration: 1 mg/ml by Nanodrop;	GeneID (NCBI): 2010	CloneNo.: 230089C4
Source: Rabbit	UNIPROT ID: P50402	
Isotype: IgG	Full Name: emerin	
Immunogen Catalog Number: AG0236	Calculated MW: 34 kDa	

Applications

Tested Applications:
Indirect ELISA, IF/ICC, IHC

Species Specificity:
human

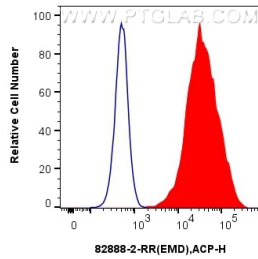
Storage

Storage:
Store at -80°C.
Storage Buffer:
PBS Only

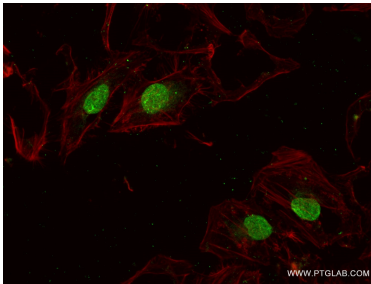
For technical support and original validation data for this product please contact:
T: 1 (888) 4PTGLAB (1-888-478-4522) (toll free in USA), or 1(312) 455-8498 (outside USA) E: proteintech@ptglab.com
W: ptglab.com

This product is exclusively available under Proteintech Group brand and is not available to purchase from any other manufacturer.

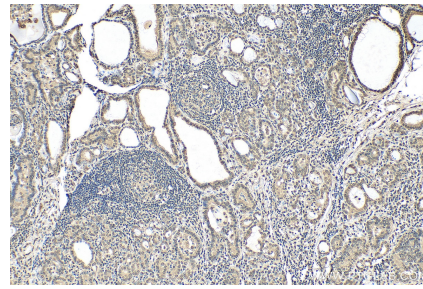
Selected Validation Data



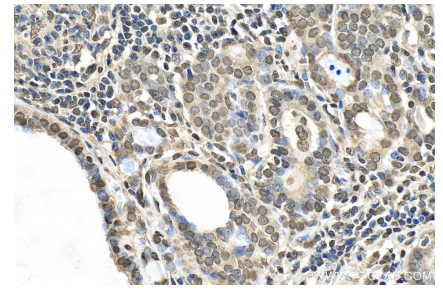
1x10⁶ HeLa cells were intracellularly stained with 0.13 ug Anti-Human Emerin (82888-2-RR, Clone:230089C4) and APC-Conjugated AffiniPure Goat Anti-Rabbit IgG(H+L) at dilution 1:166 (red), or 0.13 ug Rabbit IgG control Rabbit PolyAb (30000-O-AP, Clone:) (blue). Cells were fixed with 4% PFA and permeabilized with Flow Cytometry Perm Buffer (PF00011-C). This data was developed using the same antibody clone with 82888-2-PBS in a different storage buffer formulation.



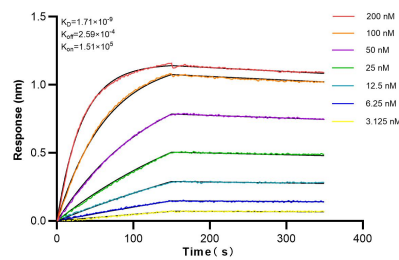
Immunofluorescent analysis of (4% PFA) fixed HeLa cells using Emerin antibody (82888-2-RR, Clone: 230089C4) at dilution of 1:300 and CoraLite@488-Conjugated AffiniPure Goat Anti-Rabbit IgG(H+L) (SA00013-2), CL594-Phalloidin (red). This data was developed using the same antibody clone with 82888-2-PBS in a different storage buffer formulation.



Immunohistochemical analysis of paraffin-embedded human thyroid cancer tissue slide using 82888-2-RR (Emerin antibody) at dilution of 1:400 (under 10x lens). Heat mediated antigen retrieval with Tris-EDTA buffer (pH 9.0). This data was developed using the same antibody clone with 82888-2-PBS in a different storage buffer formulation.



Immunohistochemical analysis of paraffin-embedded human thyroid cancer tissue slide using 82888-2-RR (Emerin antibody) at dilution of 1:400 (under 40x lens). Heat mediated antigen retrieval with Tris-EDTA buffer (pH 9.0). This data was developed using the same antibody clone with 82888-2-PBS in a different storage buffer formulation.



Biolayer interferometry (BLI) kinetic assays of 82888-2-RR against Human Emerin were performed. The affinity constant is 1.71 nM.