

For Research Use Only

# IFT88 Recombinant antibody, PBS Only

Catalog Number: 82886-2-PBS



## Basic Information

<b>Catalog Number:</b> 82886-2-PBS	<b>GenBank Accession Number:</b> BC030776	<b>Purification Method:</b> Protein A purification
<b>Size:</b> 100ug , Concentration: 1 mg/ml by Nanodrop;	<b>GeneID (NCBI):</b> 8100	<b>CloneNo.:</b> 230074E12
<b>Source:</b> Rabbit	<b>UNIPROT ID:</b> Q13099	
<b>Isotype:</b> IgG	<b>Full Name:</b> intraflagellar transport 88 homolog (Chlamydomonas)	
<b>Immunogen Catalog Number:</b> AG4980	<b>Calculated MW:</b> 94 kDa	
	<b>Observed MW:</b> 88-95 kDa	

## Applications

**Tested Applications:**  
WB, IF/ICC, ELISA

**Species Specificity:**  
human

## Background Information

Intraflagellar transport (IFT), mediated by molecular motors and IFT particles, is an important transport process that occurs in the cilium and has been shown to be essential for the assembly and maintenance of cilia and flagella in many organisms. IFT88 (intraflagellar transport protein 88; also known as TG737 or TTC10) is a component of IFT particles and required for cilium biogenesis. Defects in IFT88/Tg737 lead to polycystic kidney disease (11062270). IFT88 localizes to spindle poles during mitosis and is required for spindle orientation in mitosis (21441926).

## Storage

**Storage:**  
Store at -80°C.

**Storage Buffer:**  
PBS Only

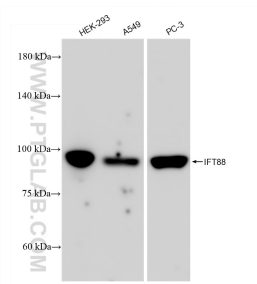
For technical support and original validation data for this product please contact:

T: 1 (888) 4PTGLAB (1-888-478-4522) (toll free in USA), or 1(312) 455-8498 (outside USA)

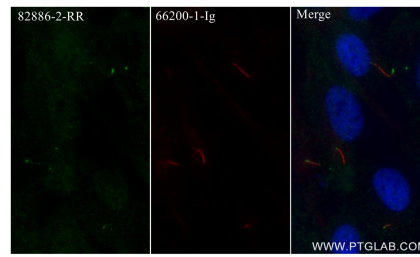
E: [proteintech@ptglab.com](mailto:proteintech@ptglab.com)  
W: [ptglab.com](http://ptglab.com)

**This product is exclusively available under Proteintech Group brand and is not available to purchase from any other manufacturer.**

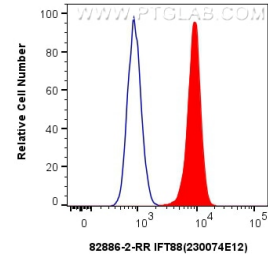
## Selected Validation Data



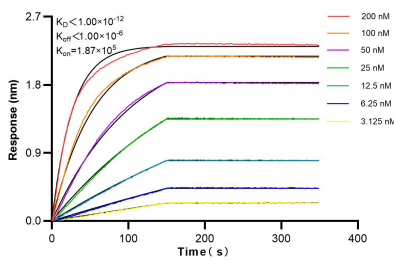
Various lysates were subjected to SDS PAGE followed by western blot with 82886-2-RR (IFT88 antibody) at dilution of 1:10000 incubated at room temperature for 1.5 hours. This data was developed using the same antibody clone with 82886-2-PBS in a different storage buffer formulation.



Immunofluorescent analysis of (4% PFA) fixed Starvation treated hTERT-RPE1 cells using IFT88 antibody (82886-2-RR, Clone: 230074E12 ) at dilution of 1:400 and CoraLite®488-Conjugated AffiniPure Goat Anti-Rabbit IgG(H+L) (SA00013-2), Acetyl-Tubulin (Lys40) antibody (66200-1-Ig, Clone: 7E5H8, red). This data was developed using the same antibody clone with 82886-2-PBS in a different storage buffer formulation.



$1 \times 10^6$  HEK-293 cells were intracellularly stained with 0.25 ug IFT88 Recombinant antibody (82886-2-RR, Clone:230074E12) and CoraLite®488-Conjugated Goat Anti-Rabbit IgG(H+L) (SA00013-2)(red), or 0.25 ug Rabbit IgG Isotype Control Recombinant Antibody (98136-1-RR, Clone: 240953C9) (blue). Cells were fixed with 4% PFA and permeabilized with Flow Cytometry Perm Buffer (PF00011-C). This data was developed using the same antibody clone with 82886-2-PBS in a



Bi-layer interferometry (BLI) kinetic assays of 82886-2-RR against Human IFT88 were performed. The affinity constant is below 1 pM.