

For Research Use Only

ZO1 Recombinant antibody, PBS Only (Capture)

Catalog Number: 82870-2-PBS



Basic Information

Catalog Number: 82870-2-PBS	GenBank Accession Number: BC111712	Purification Method: Protein A purification
Size: 100ug, Concentration: 1 mg/ml by Nanodrop;	GeneID (NCBI): 7082	CloneNo.: 240150A1
Source: Rabbit	UNIPROT ID: Q07157	
Isotype: IgG	Full Name: tight junction protein 1 (zona occludens 1)	
Immunogen Catalog Number: AG33182	Calculated MW: 1748 aa, 195 kDa	

Applications

Tested Applications:
Cytometric bead array, Sandwich ELISA, Indirect ELISA, Sample test

Species Specificity:
human

Product Information

82870-2-PBS targets ZO1 as part of a matched antibody pair:

MP00349-1: 82870-2-PBS capture and 82870-5-PBS detection (validated in Cytometric bead array)

MP00349-2: 82870-2-PBS capture and 82870-3-PBS detection (validated in Cytometric bead array)

MP00349-3: 82870-2-PBS capture and 82870-4-PBS detection (validated in Cytometric bead array)

MP00349-4: 82870-2-PBS capture and 82870-9-PBS detection (validated in Sandwich ELISA)

Unconjugated rabbit recombinant monoclonal antibody in PBS only (BSA and azide free) storage buffer at a concentration of 1 mg/mL, ready for conjugation. Created using Proteintech's proprietary in-house recombinant technology. Recombinant production enables unrivalled batch-to-batch consistency, easy scale-up, and future security of supply.

This conjugation ready format makes antibodies ideal for use in many applications including: ELISAs, multiplex assays requiring matched pairs, mass cytometry, and multiplex imaging applications. Antibody use should be optimized by the end user for each application and assay.

Storage

Storage:
Store at -80°C.

Storage Buffer:
PBS Only

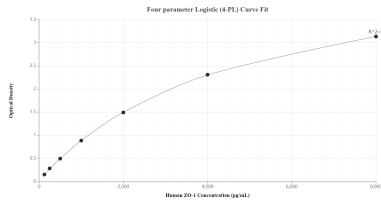
For technical support and original validation data for this product please contact:

T: 1 (888) 4PTGLAB (1-888-478-4522) (toll free in USA), or 1(312) 455-8498 (outside USA)

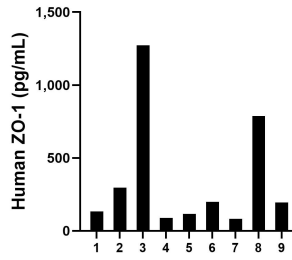
E: proteintech@ptglab.com
W: ptglab.com

This product is exclusively available under Proteintech Group brand and is not available to purchase from any other manufacturer.

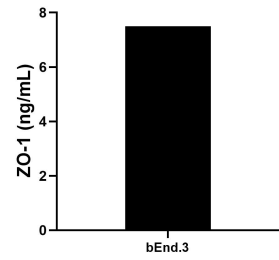
Selected Validation Data



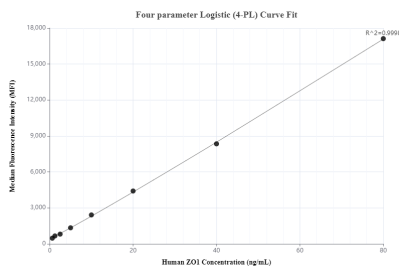
Sandwich ELISA standard curve of MP00349-4, Human ZO-1 Recombinant Matched Antibody Pair- PBS only. 82870-2-PBS was coated to a plate as the capture antibody and incubated with serial dilutions of standard Ag33182. 82870-9-PBS was HRP conjugated as the detection antibody. Range: 125-8000 pg/mL



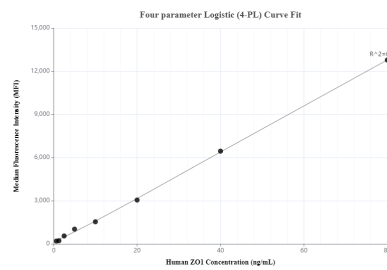
Serum of nine individual healthy human donors was measured. The ZO-1 concentration of detected samples was determined to be 352.4 pg/mL with a range of 83.4 - 1,272.8 pg/mL.



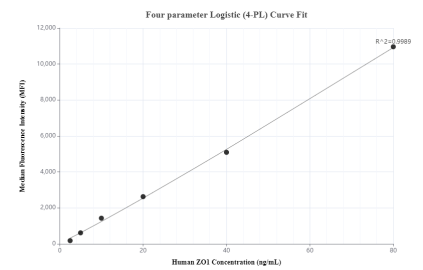
The mean ZO-1 concentration was determined to be 7.5 ng/mL in bEnd.3 cell extract based on a 1.8 mg/mL extract load.



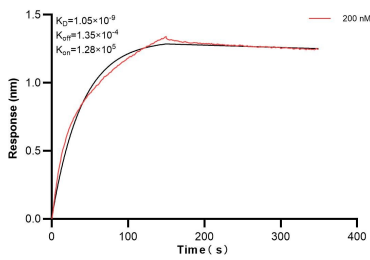
Cytometric bead array standard curve of MP00349-1, ZO-1 Recombinant Matched Antibody Pair, PBS Only. Capture antibody: 82870-2-PBS. Detection antibody: 82870-5-PBS. Standard: Ag33182. Range: 0.625-80 ng/mL



Cytometric bead array standard curve of MP00349-2, ZO-1 Recombinant Matched Antibody Pair, PBS Only. Capture antibody: 82870-2-PBS. Detection antibody: 82870-3-PBS. Standard: Ag33182. Range: 0.625-80 ng/mL



Cytometric bead array standard curve of MP00349-3, ZO-1 Recombinant Matched Antibody Pair, PBS Only. Capture antibody: 82870-2-PBS. Detection antibody: 82870-4-PBS. Standard: Ag33182. Range: 2.5-80 ng/mL



Biolayer interferometry (BLI) kinetic assay of 82870-2-PBS against Human ZO1 was performed. The affinity constant is 1.05 nM.