

For Research Use Only

TAF15 Recombinant antibody, PBS Only



Catalog Number: 82860-1-PBS

Basic Information

Catalog Number: 82860-1-PBS	GenBank Accession Number: BC046099	Purification Method: Protein A purification
Size: 100ug, Concentration: 1mg/ml by Nanodrop;	GeneID (NCBI): 8148	CloneNo.: 3L13
Source: Rabbit	UNIPROT ID: Q92804	
Isotype: IgG	Full Name: TAF15 RNA polymerase II, TATA box binding protein (TBP)-associated factor, 68kDa	
Immunogen Catalog Number: AG20828	Calculated MW: 592 aa, 62 kDa	
	Observed MW: 62-75 kDa	

Applications

Tested Applications:
WB, IF, Indirect ELISA

Species Specificity:
Human, mouse, rat

Background Information

TAF15 (TAF2N or TAFII68) is a nuclear protein known to associate with a distinct subpopulation of transcription factor IID (TFIID), a multi-subunit complex that nucleates the pre-initiation complex on promoters of protein-coding genes. TAF15 harbors a transcriptional activation domain, a RNA recognition motif and many Arg-Gly-Gly repeats that participate in RNA binding. TAF15 along with FUS and EWS constitutes the FET (FUS/EWS/TAF15) protein family of heterogeneous nuclear ribonucleoproteins (hnRNPs) class of RNA binding proteins that are multifunctional proteins implicated in numerous aspects of RNA processing/functions. TAF15 is a nuclear protein that shuttle between cytoplasm-nucleus and as RNA/ssDNA-binding protein, it play specific roles during transcription initiation at distinct promoters and enter the preinitiation complex together with the RNA polymerase II. TAF15 as well as other FET member genes are frequently translocated in sarcomas and rare hematopoietic as well as epithelial cancers. Moreover, dominant mutations in genes coding for four hnRNPs (TDP-43, FUS/TLS, TAF15, and EWS) are found in familial and sporadic cases of ALS and a chromosomal aberration involving TAF15/TAF2N is found in a form of extraskeletal myxoid chondrosarcomas (EMC).

Storage

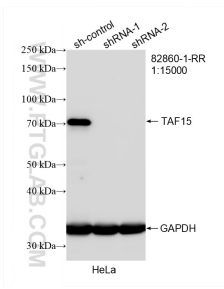
Storage:
Store at -80°C.

Storage Buffer:
PBS Only

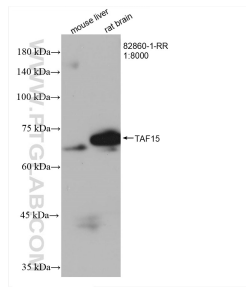
For technical support and original validation data for this product please contact:
T: 1 (888) 4PTGLAB (1-888-478-4522) (toll free in USA), or 1(312) 455-8498 (outside USA) E: proteintech@ptglab.com W: ptglab.com

This product is exclusively available under Proteintech Group brand and is not available to purchase from any other manufacturer.

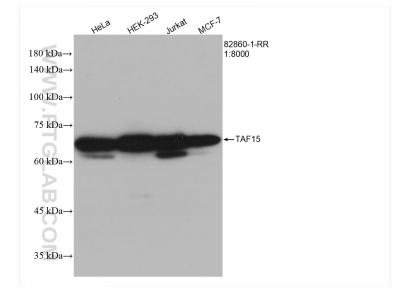
Selected Validation Data



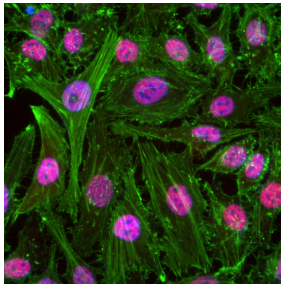
WB result of TAF15 antibody (82860-1-RR; 1:15000; incubated at room temperature for 1.5 hours) with sh-Control and sh-TAF15 transfected HeLa cells. This data was developed using the same antibody clone with 82860-1-PBS in a different storage buffer formulation.



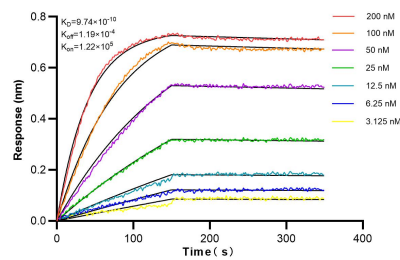
Various lysates were subjected to SDS PAGE followed by western blot with 82860-1-RR (TAF15 antibody) at dilution of 1:8000 incubated at room temperature for 1.5 hours. This data was developed using the same antibody clone with 82860-1-PBS in a different storage buffer formulation.



Various lysates were subjected to SDS PAGE followed by western blot with 82860-1-RR (TAF15 antibody) at dilution of 1:8000 incubated at room temperature for 1.5 hours. This data was developed using the same antibody clone with 82860-1-PBS in a different storage buffer formulation.



Immunofluorescent analysis of (4% PFA) fixed HeLa cells using TAF15 antibody (82860-1-RR, Clone: 3L13) at dilution of 1:800 and Multi-rAb CoraLite® Plus 594-Goat Anti-Rabbit Recombinant Secondary Antibody (H+L) (RGAR004). CoraLite® Plus 488-Phalloidin (green) This data was developed using the same antibody clone with 82860-1-PBS in a different storage buffer formulation.



Biolayer interferometry (BLI) kinetic assays of 82860-1-RR against Human TAF15 were performed. The affinity constant is 0.974 nM.