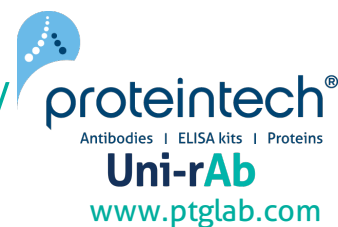


For Research Use Only

# Talin-1 Recombinant antibody, PBS Only

Catalog Number: 82856-18-PBS

Featured Product



## Basic Information

### Catalog Number:

82856-18-PBS

### Size:

100ug, Concentration: 1 mg/ml by Nanodrop;

### Source:

Rabbit

### Isotype:

IgG

### Immunogen Catalog Number:

AG5367

### GenBank Accession Number:

BC042923

### GeneID (NCBI):

7094

### UNIPROT ID:

Q9Y490

### Full Name:

talin 1

### Calculated MW:

2541 aa, 270 kDa

### Observed MW:

~270 kDa

### Purification Method:

Protein A purification

### CloneNo.:

240294G5

## Applications

### Tested Applications:

WB, IHC, IF/ICC, FC (Intra), ELISA

### Species Specificity:

human, mouse, rat

## Background Information

Talin-1 is a large cytoskeletal protein consisting of a globular head domain and a long rod comprised of a series of  $\alpha$ -helical bundles (PMID: 35266014). Talin-1 is ubiquitously expressed and is a major component of focal adhesions which are multi-protein, integrin-containing complexes, mediating cell migration, adhesion and integrin signalling (PMID: 33431906). Talin-1 also plays a role in tumor formation, migration and metastasis in various malignancies (PMID: 37013489).

## Storage

### Storage:

Store at -80°C.

### Storage Buffer:

PBS Only

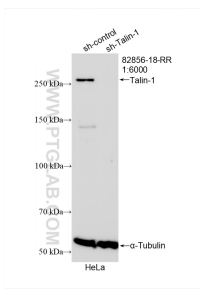
For technical support and original validation data for this product please contact:

T: 1 (888) 4PTGLAB (1-888-478-4522) (toll free in USA), or 1(312) 455-8498 (outside USA)

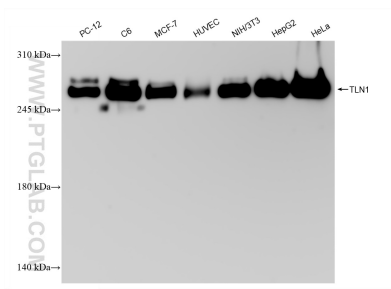
E: [proteintech@ptglab.com](mailto:proteintech@ptglab.com)  
W: [ptglab.com](http://ptglab.com)

This product is exclusively available under Proteintech Group brand and is not available to purchase from any other manufacturer.

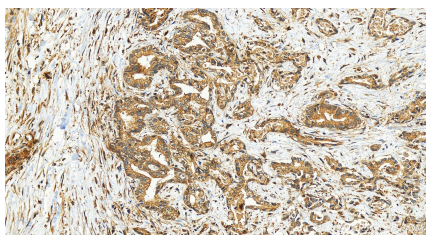
Selected Validation Data



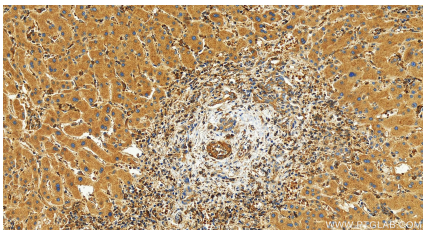
WB result of Talin-1 antibody (82856-18-RR; 1:6000; incubated at room temperature for 1.5 hours) with sh-Control and sh-Talin-1 transfected HeLa cells. This data was developed using the same antibody clone with 82856-18-PBS in a different storage buffer formulation.



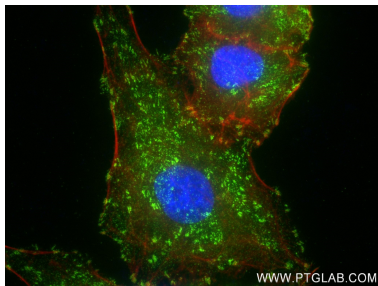
Various lysates were subjected to SDS PAGE followed by western blot with 82856-18-RR (Talin-1 antibody) at dilution of 1:10000 incubated at room temperature for 1.5 hours. This data was developed using the same antibody clone with 82856-18-PBS in a different storage buffer formulation.



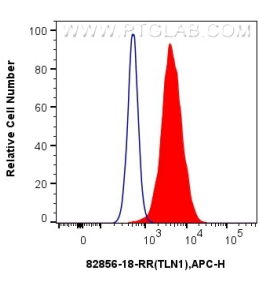
Immunohistochemical analysis of paraffin-embedded human intrahepatic cholangiocarcinoma tissue slide using 82856-18-RR (Talin-1 antibody) at dilution of 1:400 (under 20x lens). Heat mediated antigen retrieval with Tris-EDTA buffer (pH 9.0). This data was developed using the same antibody clone with 82856-18-PBS in a different storage buffer formulation.



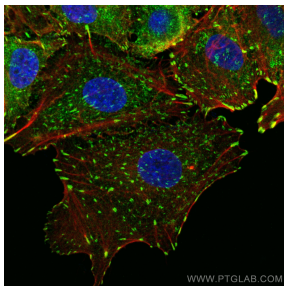
Immunohistochemical analysis of paraffin-embedded human intrahepatic cholangiocarcinoma tissue slide using 82856-18-RR (Talin-1 antibody) at dilution of 1:400 (under 20x lens). Heat mediated antigen retrieval with Tris-EDTA buffer (pH 9.0). This data was developed using the same antibody clone with 82856-18-PBS in a different storage buffer formulation.



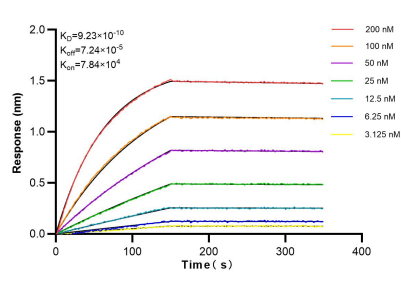
Immunofluorescent analysis of (4% PFA) fixed A549 cells using Talin-1 antibody (82856-18-RR, Clone: 240294G5) at dilution of 1:400 and Coralite® 488-Conjugated AffiniPure Goat Anti-Rabbit IgG(H+L) (SA00013-2), CL594-Phalloidin (red). This data was developed using the same antibody clone with 82856-18-PBS in a different storage buffer formulation.



1x10<sup>6</sup> A549 cells were intracellularly stained with 0.25 ug Talin-1 Recombinant Antibody (82856-18-RR, Clone: 240294G5) and APC-Conjugated AffiniPure Goat Anti-Rabbit IgG(H+L)(red), or 0.25 ug Isotype Control (blue). Cells were fixed with 4% PFA and permeabilized with Flow Cytometry Perm Buffer (PF00011-C). This data was developed using the same antibody clone with 82856-18-PBS in a different storage buffer formulation.



Immunofluorescent analysis of (4% PFA) fixed A549 cells using Talin-1 antibody (82856-18-RR, Clone: 240294G5) at dilution of 1:400 and Multi-rAb Coralite® Plus 488-Goat Anti-Rabbit Recombinant Secondary Antibody (H+L) (RGAR002), (CL594-Phalloidin, red). This data was developed using the same antibody clone with 82856-18-PBS in a different storage buffer formulation.



Biolayer interferometry (BLI) kinetic assays of 82856-18-RR against Human TLN1 were performed. The affinity constant is 0.923 nM.