

For Research Use Only

BACH1 Recombinant antibody, PBS Only (Detector)

Catalog Number: 82842-2-PBS



Basic Information

Catalog Number: 82842-2-PBS	GenBank Accession Number: BC063307	Purification Method: Protein A purification
Size: 100ug, Concentration: 1mg/ml by Nanodrop;	GeneID (NCBI): 571	CloneNo.: 402
Source: Rabbit	ENSEMBL Gene ID: ENSG00000156273	
Isotype: IgG	UNIPROT ID: O14867	
Immunogen Catalog Number: AG5128	Full Name: BTB and CNC homology 1, basic leucine zipper transcription factor 1	
	Calculated MW: 82 kDa	

Applications

Tested Applications:
Cytometric bead array, Sandwich ELISA, Indirect ELISA,
Sample test

Species Specificity:
human

Product Information

82842-2-PBS targets BACH1 as part of a matched antibody pair:

MP80007-1: 66762-2-PBS capture and 82842-2-PBS detection (validated in Cytometric bead array, Sandwich ELISA)

MP80007-3: 66762-1-PBS capture and 82842-2-PBS detection (validated in Cytometric bead array)

Unconjugated rabbit recombinant monoclonal antibody in PBS only (BSA and azide free) storage buffer at a concentration of 1 mg/mL, ready for conjugation. Created using Proteintech's proprietary in-house recombinant technology. Recombinant production enables unrivalled batch-to-batch consistency, easy scale-up, and future security of supply.

This conjugation ready format makes antibodies ideal for use in many applications including: ELISAs, multiplex assays requiring matched pairs, mass cytometry, and multiplex imaging applications. Antibody use should be optimized by the end user for each application and assay.

Storage

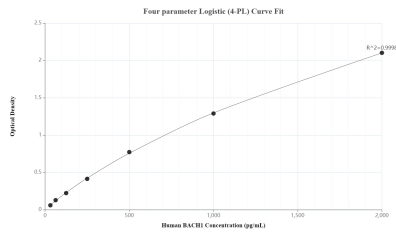
Storage:
Store at -80°C.

Storage Buffer:
PBS Only

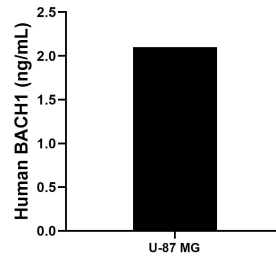
For technical support and original validation data for this product please contact:
T: 1 (888) 4PTGLAB (1-888-478-4522) (toll free in USA), or 1(312) 455-8498 (outside USA)
E: proteintech@ptglab.com
W: ptglab.com

This product is exclusively available under Proteintech Group brand and is not available to purchase from any other manufacturer.

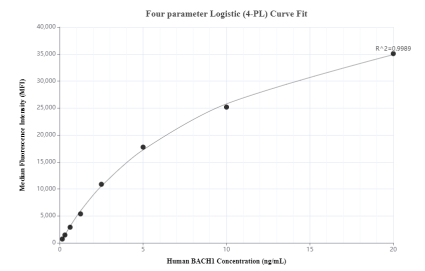
Selected Validation Data



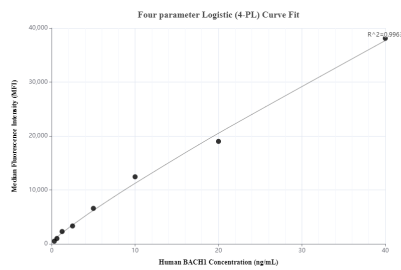
Sandwich ELISA standard curve of MP80007-1, Human BACH1 Hybrid Matched Antibody Pair - PBS only. 66762-2-PBS was coated to a plate as the capture antibody and incubated with serial dilutions of standard Ag6011. 82842-2-PBS was HRP conjugated as the detection antibody. Range: 31.25-2000 pg/mL



The mean BACH1 concentration was determined to be 2.1 ng/mL in U-87 MG cell extract based on a 2.0 mg/mL extract load.



Cytometric bead array standard curve of MP80007-1, BACH1 Hybrid Matched Antibody Pair, PBS Only. Capture antibody: 66762-2-PBS. Detection antibody: 82842-2-PBS. Standard: Ag6011. Range: 0.156-20 ng/mL



Cytometric bead array standard curve of MP80007-3, BACH1 Hybrid Matched Antibody Pair, PBS Only. Capture antibody: 66762-1-PBS. Detection antibody: 82842-2-PBS. Standard: Ag6011. Range: 0.313-40 ng/mL