

For Research Use Only

# Lipocalin-2/NGAL Recombinant antibody, PBS Only (Capture)

Catalog Number: 82841-9-PBS



## Basic Information

<b>Catalog Number:</b> 82841-9-PBS	<b>GenBank Accession Number:</b> NP_005555.2	<b>Purification Method:</b> Protein A purification
<b>Size:</b> 100ug, Concentration: 1mg/ml by Nanodrop;	<b>GeneID (NCBI):</b> 3934	<b>CloneNo.:</b> 2N10
<b>Source:</b> Rabbit	<b>UNIPROT ID:</b> P80188	
<b>Isotype:</b> IgG	<b>Full Name:</b> Lipocalin 2	
	<b>Calculated MW:</b> 23kd	

## Applications

**Tested Applications:**  
Sandwich ELISA, Indirect ELISA, Sample test

**Species Specificity:**  
human

## Product Information

82841-9-PBS targets Lipocalin-2/NGAL as part of a matched antibody pair.

MP00770-1: 82841-9-PBS capture and 82841-2-PBS detection (validated in Sandwich ELISA)

Unconjugated rabbit recombinant monoclonal antibody in PBS only (BSA and azide free) storage buffer at a concentration of 1 mg/mL, ready for conjugation. Created using Proteintech's proprietary in-house recombinant technology. Recombinant production enables unrivalled batch-to-batch consistency, easy scale-up, and future security of supply.

This conjugation ready format makes antibodies ideal for use in many applications including: ELISAs, multiplex assays requiring matched pairs, mass cytometry, and multiplex imaging applications. Antibody use should be optimized by the end user for each application and assay.

## Storage

**Storage:**  
Store at -80°C.

**Storage Buffer:**  
PBS Only

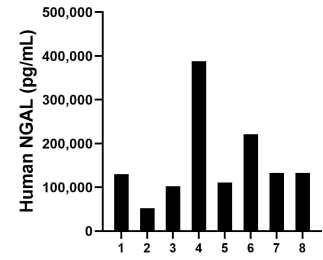
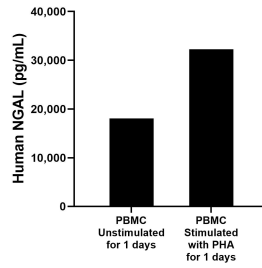
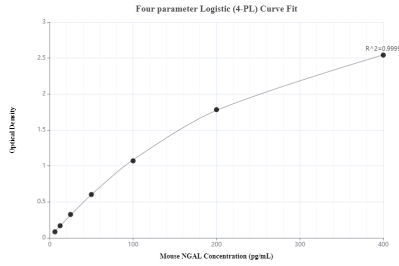
For technical support and original validation data for this product please contact:

T: 1 (888) 4PTGLAB (1-888-478-4522) (toll free in USA), or 1(312) 455-8498 (outside USA)

E: [proteintech@ptglab.com](mailto:proteintech@ptglab.com)  
W: [ptglab.com](http://ptglab.com)

**This product is exclusively available under Proteintech Group brand and is not available to purchase from any other manufacturer.**

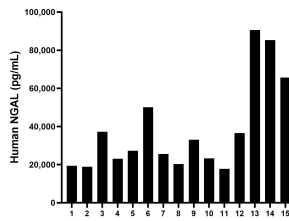
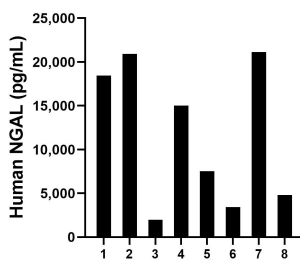
## Selected Validation Data



Sandwich ELISA standard curve of MP00770-1, NGAL Recombinant Matched Antibody Pair - PBS only. 82841-9-PBS was coated to a plate as the capture antibody and incubated with serial dilutions of standard Eg0268. 82841-2-PBS was HRP conjugated as the detection antibody. Range: 19.5-1250 pg/mL

Human peripheral blood mononuclear cells (PBMC) were cultured unstimulated or stimulated with 10  $\mu$ g/mL PHA for 1 days. The mean NGAL concentration was determined to be 18,080.8 pg/mL in unstimulated PBMC supernatant, 32,268.8 pg/mL in PHA stimulated PBMC supernatant.

Saliva of eight individual healthy human donors was measured. The NGAL concentration of detected samples was determined to be 158,732.5 pg/mL with a range of 52,136.9 - 388,400.2 pg/mL.



Urine of eight individual healthy human donors was measured. The NGAL concentration of detected samples was determined to be 11,654.6 pg/mL with a range of 1,964.2 - 21,150.4 pg/mL.

Plasma of fifteen individual healthy human donors was measured. The NGAL concentration of detected samples was determined to be 38,260.8 pg/mL with a range of 17,778.7 - 90,593.8 pg/mL.