

For Research Use Only

ARL13B Recombinant antibody, PBS Only

Catalog Number: 82834-2-PBS



Basic Information

Catalog Number: 82834-2-PBS	GenBank Accession Number: BC094725	Purification Method: Protein A purification
Size: 100ug, Concentration: 1mg/ml by Nanodrop;	GeneID (NCBI): 200894	CloneNo.: 3H5
Source: Rabbit	UNIPROT ID: Q35XY8	
Isotype: IgG	Full Name: ADP-ribosylation factor-like 13B	
Immunogen Catalog Number: AG12015	Calculated MW: 48 kDa	

Applications

Tested Applications:
IF/ICC, Indirect ELISA

Species Specificity:
human

Background Information

ARL13B, also named as ARL2L1, is a small ciliary G protein of the Ras superfamily. Localized in the cilia, it is required for cilium biogenesis and sonic hedgehog signaling. Defects in ARL13B are the cause of Joubert syndrome (JS) which is an autosomal recessive disorder characterized by a distinctive cerebellar malformation (PMID: 19906870). ARL13B can be used to mark the cilia (PMID:22072986). The second antibody is used against guinea pigs.

Storage

Storage:
Store at -80°C.

Storage Buffer:
PBS Only

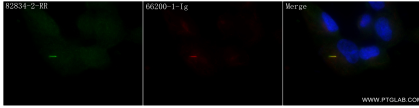
For technical support and original validation data for this product please contact:

T: 1 (888) 4PTGLAB (1-888-478-4522) (toll free in USA), or 1(312) 455-8498 (outside USA)

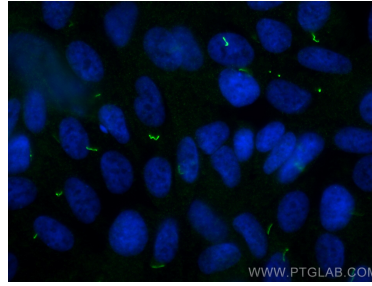
E: proteintech@ptglab.com
W: ptglab.com

This product is exclusively available under Proteintech Group brand and is not available to purchase from any other manufacturer.

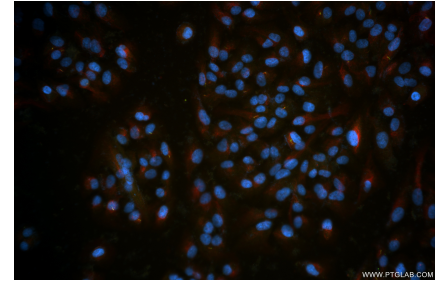
Selected Validation Data



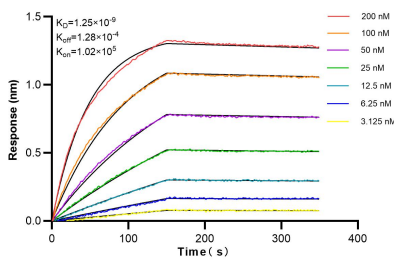
Immunofluorescent analysis of (4% PFA) fixed Starvation treated hTERT-RPE1 cells using ARL13B antibody (82834-2-RR, Clone: 3H5) at dilution of 1:400 and CoraLite@488-Conjugated AffiniPure Goat Anti-Rabbit IgG(H+L) (SA00013-2), Acetyl-Tubulin (Lys40) antibody (66200-1-Ig, Clone: 7E5H8, red). This data was developed using the same antibody clone with 82834-2-PBS in a different storage buffer formulation.



Immunofluorescent analysis of (4% PFA) fixed hTERT-RPE1 cells using ARL13B antibody (82834-2-RR, Clone: 3H5) at dilution of 1:400 and CoraLite@488-Conjugated Goat Anti-Rabbit IgG(H+L) (SA00013-2). This data was developed using the same antibody clone with 82834-2-PBS in a different storage buffer formulation.



Immunofluorescent analysis of (4% PFA) fixed Starvation treated hTERT-RPE1 cells using ARL13B antibody (82834-2-RR, Clone: 3H5) at dilution of 1:400 and CoraLite@488-Conjugated Goat Anti-Rabbit IgG(H+L) (SA00013-2), Acetyl-Tubulin (Lys40) antibody (66200-1-Ig, Clone: 7E5H8, red). This data was developed using the same antibody clone with 82834-2-PBS in a different storage buffer formulation.



Biolayer interferometry (BLI) kinetic assays of 82834-2-RR against Human ARL13B were performed. The affinity constant is 1.25 nM.