

For Research Use Only

Mono-Methyl-Histone H3 (Lys36) Recombinant antibody

Catalog Number: 82825-2-RR



Basic Information

Catalog Number: 82825-2-RR	GenBank Accession Number: BC066245	Purification Method: Protein A purification
Size: 100ul , Concentration: 1000 µg/ml by Nanodrop;	GeneID (NCBI): 8350	CloneNo.: 241138B6
Source: Rabbit	UNIPROT ID: P68431	Recommended Dilutions: WB 1:5000-1:50000
Isotype: IgG	Full Name: histone cluster 1, H3a	
	Observed MW: 15 kDa	

Applications

Tested Applications:
WB, FC (Intra), Dot Blot, ELISA

Species Specificity:
human, mouse, rat

Positive Controls:

WB : HEK-293T cells, HeLa cells, THP-1 cells, K-562 cells, mouse liver tissue, NIH/3T3 cells, HSC-T6 cells

Background Information

Histones, including H1/H5 (linker histones), H2, H3, and H4 (core histones), are nucleic proteins which interact with DNA to form the nucleosomes and play important roles in gene regulation and DNA replication. Histone proteins are highly post-translationally modified while Histone H3 is the most extensively modified.

Storage

Storage:
Store at -20°C. Stable for one year after shipment.

Storage Buffer:
PBS with 0.02% sodium azide and 50% glycerol pH 7.3.

Aliquoting is unnecessary for -20°C storage

***** 20ul sizes contain 0.1% BSA**

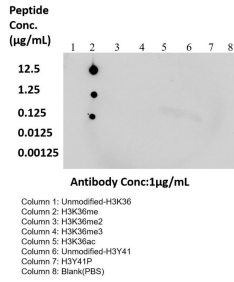
For technical support and original validation data for this product please contact:

T: 1 (888) 4PTGLAB (1-888-478-4522) (toll free
in USA), or 1(312) 455-8498 (outside USA)

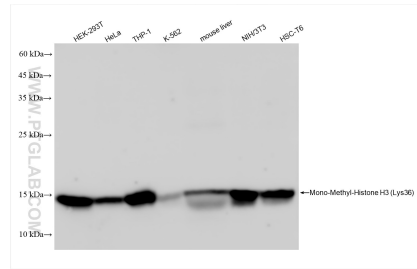
E: proteintech@ptglab.com
W: ptglab.com

This product is exclusively available under Proteintech Group brand and is not available to purchase from any other manufacturer.

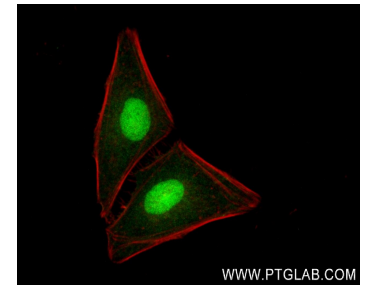
Selected Validation Data



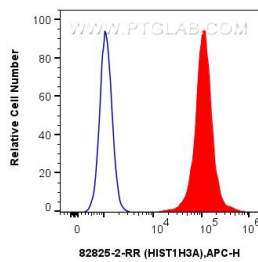
Dot blot analysis was used to confirm the specificity of Mono-Methyl-Histone H3 (Lys36) antibody. Acetylated peptides were spotted onto NC and probed with antibody at 1 µg/mL. The amount of peptide (µg/mL) spotted is indicated next to each row.



Various lysates were subjected to SDS PAGE followed by western blot with 82825-2-RR (HIST1H3A antibody) at dilution of 1:10000 incubated at room temperature for 1.5 hours.



Immunofluorescent analysis of (4% PFA) fixed HeLa cells using Mono-Methyl-Histone H3 (Lys36) antibody (82825-2-RR, Clone: 241138B6) at dilution of 1:400 and CoraLite@488-Conjugated Goat Anti-Rabbit IgG(H+L) (SA00013-2), CL594-Phalloidin (red).



1x10⁶ HeLa cells were intracellularly stained with 0.25 µg Hist1h3a Recombinant Antibody (82825-2-RR, Clone:241138B6) and APC-Conjugated Goat Anti-Rabbit IgG(H+L)(red), or 0.25 µg Isotype Control (blue). Cells were fixed and permeabilized with True-Nuclear Transcription Factor Buffer Set.