

For Research Use Only

Mono-Methyl-Histone H3 (Lys36) Recombinant antibody, PBS Only

Catalog Number: 82825-2-PBS



Basic Information

Catalog Number: 82825-2-PBS	GenBank Accession Number: BC066245	Purification Method: Protein A purification
Size: 100ug, Concentration: 1 mg/ml by Nanodrop;	GeneID (NCBI): 8350	CloneNo.: 241138B6
Source: Rabbit	UNIPROT ID: P68431	
Isotype: IgG	Full Name: histone cluster 1, H3a	
	Observed MW: 15 kDa	

Applications

Tested Applications:
WB, IF/ICC, FC (Intra), Dot Blot, Indirect ELISA

Species Specificity:
human, mouse, rat

Background Information

Histones, including H1/H5 (linker histones), H2, H3, and H4 (core histones), are nucleic proteins which interact with DNA to form the nucleosomes and play important roles in gene regulation and DNA replication. Histone proteins are highly post-translationally modified while Histone H3 is the most extensively modified.

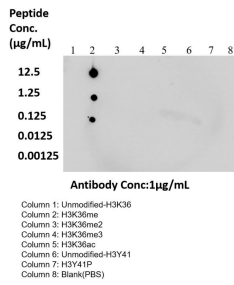
Storage

Storage:
Store at -80°C.
Storage Buffer:
PBS Only

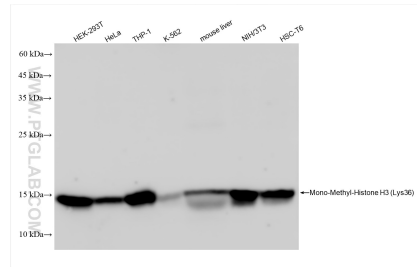
For technical support and original validation data for this product please contact:
T: 1 (888) 4PTGLAB (1-888-478-4522) (toll free in USA), or 1(312) 455-8498 (outside USA) E: proteintech@ptglab.com
W: ptglab.com

This product is exclusively available under Proteintech Group brand and is not available to purchase from any other manufacturer.

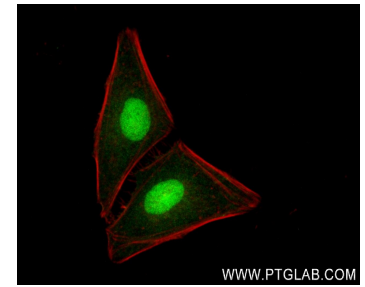
Selected Validation Data



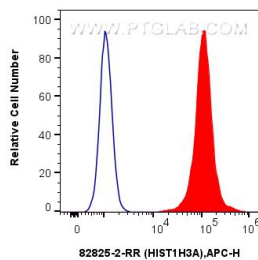
Dot blot analysis was used to confirm the specificity of Mono-Methyl-Histone H3 (Lys36) antibody. Acetylated peptides were spotted onto NC and probed with antibody at 1 µg/ml. The amount of peptide (µg/ml) spotted is indicated next to each row. This data was developed using the same antibody clone with 82825-2-PBS in a different storage buffer formulation.



Various lysates were subjected to SDS PAGE followed by western blot with 82825-2-RR (HIST1H3A antibody) at dilution of 1:10000 incubated at room temperature for 1.5 hours. This data was developed using the same antibody clone with 82825-2-PBS in a different storage buffer formulation.



Immunofluorescent analysis of (4% PFA) fixed HeLa cells using Mono-Methyl-Histone H3 (Lys36) antibody (82825-2-RR, Clone: 241138B6) at dilution of 1:400 and CoraLite@488-Conjugated Goat Anti-Rabbit IgG(H+L) (SA00013-2), CL594-Phalloidin (red). This data was developed using the same antibody clone with 82825-2-PBS in a different storage buffer formulation.



1x10⁶ HeLa cells were intracellularly stained with 0.25 µg Hist1h3a Recombinant Antibody (82825-2-RR, Clone:241138B6) and APC-Conjugated Goat Anti-Rabbit IgG(H+L)(red), or 0.25 µg Isotype Control (blue). Cells were fixed and permeabilized with True-Nuclear Transcription Factor Buffer Set. This data was developed using the same antibody clone with 82825-2-PBS in a different storage buffer formulation.