

For Research Use Only

# Cytokeratin 14 Recombinant antibody, PBS Only

Catalog Number: 82824-1-PBS

Featured Product



## Basic Information

<b>Catalog Number:</b> 82824-1-PBS	<b>GenBank Accession Number:</b> BC002690	<b>Purification Method:</b> Protein A purification
<b>Size:</b> 100ug, Concentration: 1mg/ml by Nanodrop;	<b>GeneID (NCBI):</b> 3861	<b>CloneNo.:</b> 1L19
<b>Source:</b> Rabbit	<b>UNIPROT ID:</b> P02533	
<b>Isotype:</b> IgG	<b>Full Name:</b> keratin 14	
<b>Immunogen Catalog Number:</b> AG17559	<b>Calculated MW:</b> 472 aa, 52 kDa	
	<b>Observed MW:</b> 52 kDa	

## Applications

**Tested Applications:**  
WB, IHC, IF/ICC, Indirect ELISA

**Species Specificity:**  
human, mouse, rat

## Background Information

Cytokeratin 14, one of about 20 different cytokeratin isotypes of human cells, is the intermediate filament protein characteristic of epithelial cells. Cytokeratin 14 is expressed in the basal compartment of all stratified squamous epithelia. In various kinds of human tumors, the appearance and increasing expression of Cytokeratin 14 were strikingly associated with higher grade and stage of carcinoma, with varying degrees of unfavorable prognosis. In lung squamous cell carcinoma (LSCC), Cytokeratin 14 was expressed in the tumor cell nests showing stromal invasion with fibrosis and lymph node metastases, indicating that Cytokeratin 14 involved in proliferation and metastasis of LSCC. Cytokeratin 14 expression is sometimes used in diagnosis of myoepithelioma and intraductal vs. invasive ductal carcinoma of the breast.

## Storage

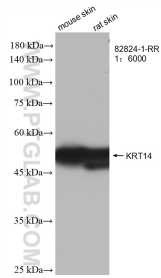
**Storage:**  
Store at -80°C.

**Storage Buffer:**  
PBS Only

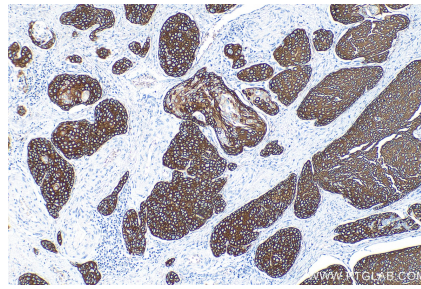
For technical support and original validation data for this product please contact:  
T: 1 (888) 4PTGLAB (1-888-478-4522) (toll free in USA), or 1(312) 455-8498 (outside USA)  
E: proteintech@ptglab.com  
W: ptglab.com

This product is exclusively available under Proteintech Group brand and is not available to purchase from any other manufacturer.

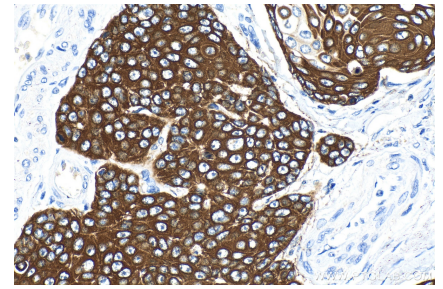
## Selected Validation Data



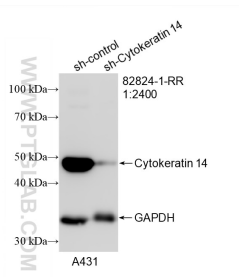
Various lysates were subjected to SDS PAGE followed by western blot with 82824-1-RR (Cytokeratin 14 antibody) at dilution of 1:6000 incubated at room temperature for 1.5 hours. This data was developed using the same antibody clone with 82824-1-PBS in a different storage buffer formulation.



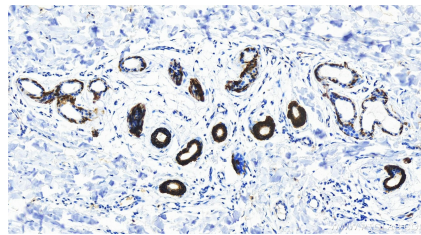
Immunohistochemical analysis of paraffin-embedded human oesophagus cancer tissue slide using 82824-1-RR (Cytokeratin 14 antibody) at dilution of 1:800 (under 10x lens). Heat mediated antigen retrieval with Tris-EDTA buffer (pH 9.0). This data was developed using the same antibody clone with 82824-1-PBS in a different storage buffer formulation.



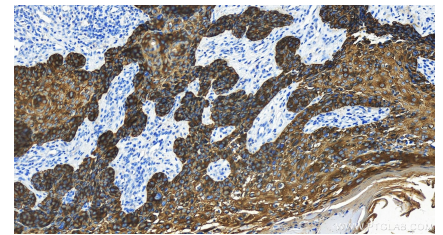
Immunohistochemical analysis of paraffin-embedded human oesophagus cancer tissue slide using 82824-1-RR (Cytokeratin 14 antibody) at dilution of 1:800 (under 40x lens). Heat mediated antigen retrieval with Tris-EDTA buffer (pH 9.0). This data was developed using the same antibody clone with 82824-1-PBS in a different storage buffer formulation.



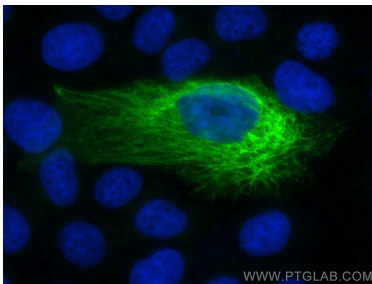
WB result of Cytokeratin 14 antibody (82824-1-RR; 1:2400; incubated at room temperature for 1.5 hours) with sh-Control and sh-Cytokeratin 14 transfected A431 cells. This data was developed using the same antibody clone with 82824-1-PBS in a different storage buffer formulation.



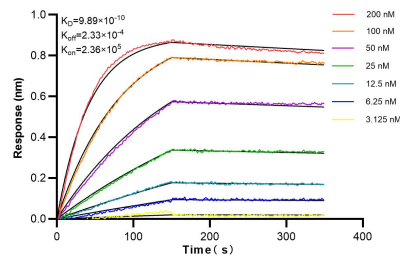
Immunohistochemical analysis of paraffin-embedded human brown disease slide using 82824-1-RR (Cytokeratin 14 antibody) at dilution of 1:1200 (under 20x lens). Heat mediated antigen retrieval with Tris-EDTA buffer (pH 9.0). This data was developed using the same antibody clone with 82824-1-PBS in a different storage buffer formulation.



Immunohistochemical analysis of paraffin-embedded human brown disease slide using 82824-1-RR (Cytokeratin 14 antibody) at dilution of 1:1200 (under 20x lens). Heat mediated antigen retrieval with Tris-EDTA buffer (pH 9.0). This data was developed using the same antibody clone with 82824-1-PBS in a different storage buffer formulation.



Immunofluorescent analysis of (-20°C Methanol) fixed A431 cells using Cytokeratin 14 antibody (82824-1-RR, Clone: 1L19) at dilution of 1:200 and Multi-rAb CoraLite Plus 488-Goat Anti-Rabbit Recombinant Secondary Antibody (H+L) (RGAR002). This data was developed using the same antibody clone with 82824-1-PBS in a different storage buffer formulation.



Biolayer interferometry (BLI) kinetic assays of 82824-1-RR against Human Cytokeratin 14 were performed. The affinity constant is 0.989 nM.