

For Research Use Only

H6PD Recombinant antibody, PBS Only



Catalog Number: 82819-2-PBS

Basic Information

Catalog Number: 82819-2-PBS	GenBank Accession Number: BC081559	Purification Method: Protein A purification
Size: 100ug , Concentration: 1 mg/ml by Nanodrop;	GeneID (NCBI): 9563	CloneNo.: 3C14
Source: Rabbit	UNIPROT ID: O95479	
Isotype: IgG	Full Name: hexose-6-phosphate dehydrogenase (glucose 1-dehydrogenase)	
Immunogen Catalog Number: AG7109	Calculated MW: 89 kDa	
	Observed MW: 89-95 kDa	

Applications

Tested Applications:
WB, Indirect ELISA

Species Specificity:
Human, rat

Background Information

Hexose-6-phosphate dehydrogenase (H6PD) is also named as GDH,6PGL. It is the main NADPH generating enzyme in the lumen of the endoplasmic reticulum. H6PD is regarded as an ancillary enzyme in prerenal glucocorticoid activation and probably acts as a nutrient sensor and as a prosurvival factor (PMID:21620971). H6PD is a glycoprotein and has been shown tissue differences in glycosylation status might explain both the difference in migration on SDS-PAGE gels as well as in activity. Defects in H6PD are a cause of cortisone reductase deficiency (CRD).

Storage

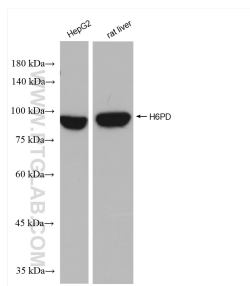
Storage:
Store at -80°C.

Storage Buffer:
PBS Only

For technical support and original validation data for this product please contact:
T: 1 (888) 4PTGLAB (1-888-478-4522) (toll free in USA), or 1(312) 455-8498 (outside USA)
E: proteintech@ptglab.com
W: ptglab.com

This product is exclusively available under Proteintech Group brand and is not available to purchase from any other manufacturer.

Selected Validation Data



Various lysates were subjected to SDS PAGE followed by western blot with 82819-2-RR (H6PD antibody) at dilution of 1:10000 incubated at room temperature for 1.5 hours. This data was developed using the same antibody clone with 82819-2-PBS in a different storage buffer formulation.