

For Research Use Only

# RPL3 Recombinant antibody, PBS Only

Catalog Number: 82815-1-PBS



## Basic Information

<b>Catalog Number:</b> 82815-1-PBS	<b>GenBank Accession Number:</b> BC012786	<b>Purification Method:</b> Protein A purification
<b>Size:</b> 100ug, Concentration: 1 mg/ml by Nanodrop;	<b>GeneID (NCBI):</b> 6122	<b>CloneNo.:</b> 3P18
<b>Source:</b> Rabbit	<b>UNIPROT ID:</b> P39023	
<b>Isotype:</b> IgG	<b>Full Name:</b> ribosomal protein L3	
<b>Immunogen Catalog Number:</b> AG1436	<b>Calculated MW:</b> 46/27 kDa	

## Applications

**Tested Applications:**  
IHC, IF/ICC, FC (Intra), Indirect ELISA

**Species Specificity:**  
human

## Background Information

Ribosomes, the complexes that catalyze protein synthesis, consist of a small 40S subunit and a large 60S subunit. Together these subunits are composed of 4 RNA species and approximately 80 structurally distinct proteins. RPL3, also named as TARBP-B and MGC104284, belongs to the ribosomal protein L3P family. This protein is a component of the 60S subunit. It can bind to the HIV-1 TAR mRNA, and it has been suggested that the protein contributes to tat-mediated transactivation. As is typical for genes encoding ribosomal proteins, there are multiple processed pseudogenes of this gene dispersed through the genome.

## Storage

**Storage:**  
Store at -80°C.

**Storage Buffer:**  
PBS Only

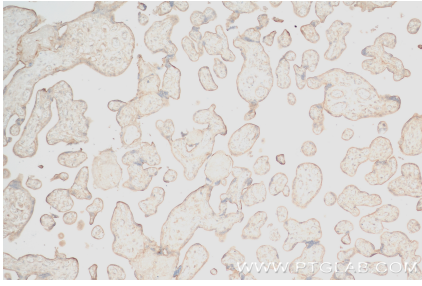
For technical support and original validation data for this product please contact:

T: 1 (888) 4PTGLAB (1-888-478-4522) (toll free in USA), or 1(312) 455-8498 (outside USA)

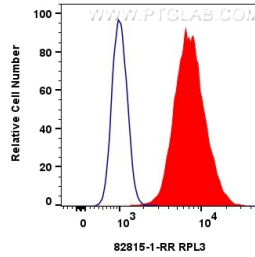
E: [proteintech@ptglab.com](mailto:proteintech@ptglab.com)  
W: [ptglab.com](http://ptglab.com)

**This product is exclusively available under Proteintech Group brand and is not available to purchase from any other manufacturer.**

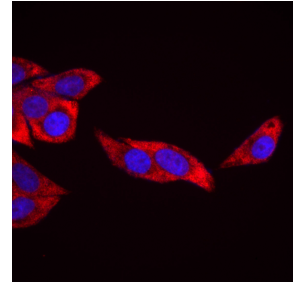
## Selected Validation Data



Immunohistochemical analysis of paraffin-embedded human placenta tissue slide using 82815-1-RR (RPL3 antibody) at dilution of 1:0 (under 10x lens). Heat mediated antigen retrieval with Tris-EDTA buffer (pH 9.0). This data was developed using the same antibody clone with 82815-1-PBS in a different storage buffer formulation.



$1 \times 10^6$  HepG2 cells were intracellularly stained with 0.25  $\mu$ g RPL3 Recombinant antibody (82815-1-RR, Clone:3P18) and CoraLite<sup>®</sup>488-Conjugated AffiniPure Goat Anti-Rabbit IgG(H+L) (SA00013-2) (red), or 0.25  $\mu$ g Isotype Control (blue). Cells were fixed with 4% PFA and permeabilized with Flow Cytometry Perm Buffer (PF00011-C). This data was developed using the same antibody clone with 82815-1-PBS in a different storage buffer formulation.



Immunofluorescent analysis of (4% PFA) fixed HepG2 cells using RPL3 antibody (82815-1-RR, Clone: 3P18) at dilution of 1:240 and Multi-rAb CoraLite<sup>®</sup> Plus 594-Goat Anti-Rabbit Recombinant Secondary Antibody (H+L) (RGAR004). This data was developed using the same antibody clone with 82815-1-PBS in a different storage buffer formulation.