

For Research Use Only

OLIG2 Recombinant antibody, PBS Only (Detector)

Catalog Number: 82806-6-PBS



Basic Information

Catalog Number: 82806-6-PBS	GenBank Accession Number: BC047511	Purification Method: Protein A purification
Size: 100ug, Concentration: 1 mg/ml by Nanodrop;	GeneID (NCBI): 10215	CloneNo.: 240839F5
Source: Rabbit	UNIPROT ID: Q13516	
Isotype: IgG	Full Name: oligodendrocyte lineage transcription factor 2	
Immunogen Catalog Number: AG5089	Calculated MW: 32 kDa	

Applications

Tested Applications:
Cytometric bead array, Sandwich ELISA, Indirect ELISA,
Sample test

Species Specificity:
human

Product Information

82806-6-PBS targets OLIG2 as part of a matched antibody pair:

MP00809-1: 82806-5-PBS capture and 82806-6-PBS detection (validated in Cytometric bead array)

MP00809-2: 82806-8-PBS capture and 82806-6-PBS detection (validated in Sandwich ELISA)

Unconjugated rabbit recombinant monoclonal antibody in PBS only (BSA and azide free) storage buffer at a concentration of 1 mg/mL, ready for conjugation. Created using Proteintech's proprietary in-house recombinant technology. Recombinant production enables unrivalled batch-to-batch consistency, easy scale-up, and future security of supply.

This conjugation ready format makes antibodies ideal for use in many applications including: ELISAs, multiplex assays requiring matched pairs, mass cytometry, and multiplex imaging applications. Antibody use should be optimized by the end user for each application and assay.

Storage

Storage:
Store at -80°C.

Storage Buffer:
PBS Only

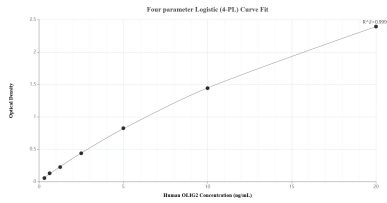
For technical support and original validation data for this product please contact:

T: 1 (888) 4PTGLAB (1-888-478-4522) (toll free
in USA), or 1(312) 455-8498 (outside USA)

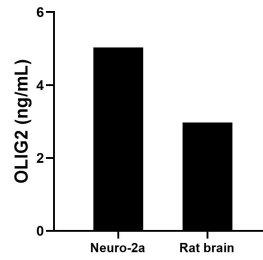
E: proteintech@ptglab.com
W: ptglab.com

This product is exclusively available under Proteintech Group brand and is not available to purchase from any other manufacturer.

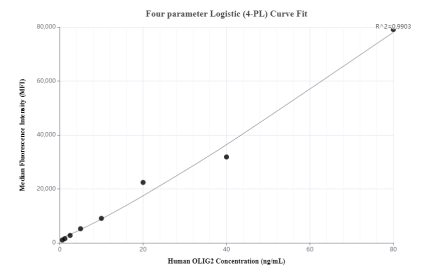
Selected Validation Data



Sandwich ELISA standard curve of MP00809-2, Human OLIG2 Recombinant Matched Antibody Pair - PBS only. 82806-8-PBS was coated to a plate as the capture antibody and incubated with serial dilutions of standard Ag5089. 82806-6-PBS was HRP conjugated as the detection antibody. Range: 0.313-20 ng/mL



The mean OLIG2 concentration was determined to be 5.03 ng/mL in Neuro-2a cell extract based on a 1.50 mg/mL extract load and 2.97 ng/mL in rat brain cell extract based on a 1.60 mg/mL extract load.



Cytometric bead array standard curve of MP00809-1, OLIG2 Recombinant Matched Antibody Pair, PBS Only. Capture antibody: 82806-5-PBS. Detection antibody: 82806-6-PBS. Standard: Ag5089. Range: 0.625-80 ng/mL