

For Research Use Only

# Lamin B2 Recombinant antibody

Catalog Number:82801-4-RR



## Basic Information

<b>Catalog Number:</b> 82801-4-RR	<b>GenBank Accession Number:</b> BC006551	<b>Purification Method:</b> Protein A purification
<b>Size:</b> 100ul , Concentration: 1000 µg/ml by Nanodrop;	<b>GeneID (NCBI):</b> 84823	<b>CloneNo.:</b> 230184C7
<b>Source:</b> Rabbit	<b>UNIPROT ID:</b> Q03252	<b>Recommended Dilutions:</b> WB 1:5000-1:50000 IF/ICC 1:200-1:800
<b>Isotype:</b> IgG	<b>Full Name:</b> lamin B2	
<b>Immunogen Catalog Number:</b> AG1335	<b>Calculated MW:</b> 68 kDa	
	<b>Observed MW:</b> 68 kDa	

## Applications

**Tested Applications:**  
WB, IF/ICC, FC (Intra), ELISA

**Species Specificity:**  
human

### Positive Controls:

**WB :** HeLa cells, Jurkat cells, HepG2 cells, Raji cells, A549 cells

**IF/ICC :** HepG2 cells,

## Background Information

Lamins are nuclear membrane structural components that are important in structural integrity of the nucleus and may also interact with chromatin (PMID: 33033404). Research studies show that lamin B2 knockout mice exhibit neuronal developmental defects and that both proteins are essential for typical brain development (PMID: 20145110). Mutations in Lamin B2 can result in a susceptibility to developing acquired partial lipodystrophy, a rare disorder characterized by the progressive loss of subcutaneous fat in a bilaterally symmetrical fashion (PMID: 16826530).

## Storage

**Storage:**  
Store at -20°C. Stable for one year after shipment.

**Storage Buffer:**  
PBS with 0.02% sodium azide and 50% glycerol pH 7.3.

Aliquoting is unnecessary for -20°C storage

\*\*\* 20ul sizes contain 0.1% BSA

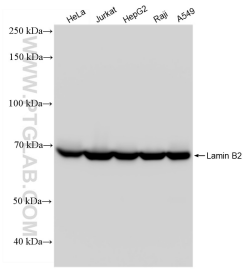
For technical support and original validation data for this product please contact:

T: 1 (888) 4PTGLAB (1-888-478-4522) (toll free in USA), or 1(312) 455-8498 (outside USA)

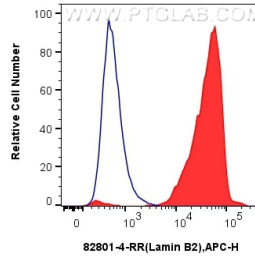
E: [proteintech@ptglab.com](mailto:proteintech@ptglab.com)  
W: [ptglab.com](http://ptglab.com)

This product is exclusively available under Proteintech Group brand and is not available to purchase from any other manufacturer.

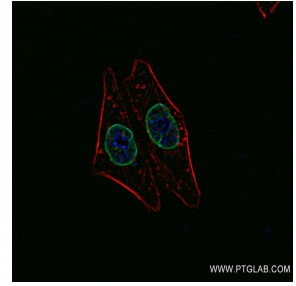
## Selected Validation Data



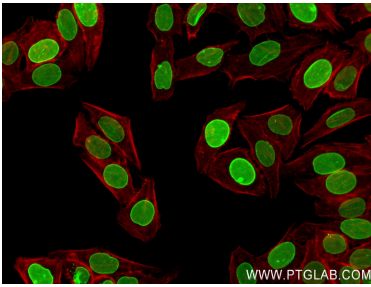
Various lysates were subjected to SDS PAGE followed by western blot with 82801-4-RR (Lamin B2 antibody) at dilution of 1:10000 incubated at room temperature for 1.5 hours.



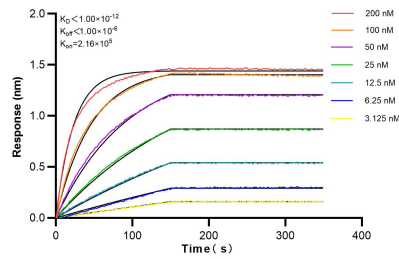
$1 \times 10^6$  HepG2 cells were intracellularly stained with 0.25  $\mu$ g Lamin B2 Recombinant antibody (82801-4-RR, Clone:230184C7) and APC-Conjugated AffiniPure Goat Anti-Rabbit IgG(H+L) (red), or 0.25  $\mu$ g Isotype Control (blue). Cells were fixed and permeabilized with True-Nuclear Transcription Factor Buffer Set.



Immunofluorescent analysis of (4% PFA) fixed HepG2 cells using Lamin B2 antibody (82801-4-RR, Clone: 230184C7) at dilution of 1:400 and CoraLite®488-Conjugated AffiniPure Goat Anti-Rabbit IgG(H+L) (SA00013-2).



Immunofluorescent analysis of (4% PFA) fixed HepG2 cells using Lamin B2 antibody (82801-4-RR, Clone: 230184C7) at dilution of 1:400 and CoraLite®488-Conjugated Goat Anti-Rabbit IgG(H+L) (SA00013-2), CL594-Phalloidin (red).



Biolayer interferometry (BLI) kinetic assays of 82801-4-RR against Human Lamin B2 were performed. The affinity constant is below 1 pM.