

For Research Use Only

Lamin B2 Recombinant antibody, PBS Only

Catalog Number: 82801-3-PBS



Basic Information

Catalog Number: 82801-3-PBS	GenBank Accession Number: BC006551	Purification Method: Protein A purification
Size: 100ug, Concentration: 1mg/ml by Nanodrop;	GeneID (NCBI): 84823	CloneNo.: 230184G4
Source: Rabbit	UNIPROT ID: Q03252	
Isotype: IgG	Full Name: lamin B2	
Immunogen Catalog Number: AG1335	Calculated MW: 68 kDa	

Applications

Tested Applications:
IF/ICC, FC (Intra), Indirect ELISA

Species Specificity:
human

Background Information

Lamins are nuclear membrane structural components that are important in structural integrity of the nucleus and may also interact with chromatin (PMID: 33033404). Research studies show that lamin B2 knockout mice exhibit neuronal developmental defects and that both proteins are essential for typical brain development (PMID: 20145110). Mutations in Lamin B2 can result in a susceptibility to developing acquired partial lipodystrophy, a rare disorder characterized by the progressive loss of subcutaneous fat in a bilaterally symmetrical fashion (PMID: 16826530).

Storage

Storage:
Store at -80°C.

Storage Buffer:
PBS Only

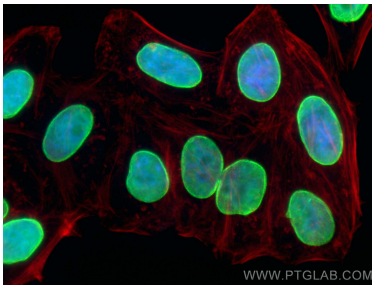
For technical support and original validation data for this product please contact:

T: 1 (888) 4PTGLAB (1-888-478-4522) (toll free in USA), or 1(312) 455-8498 (outside USA)

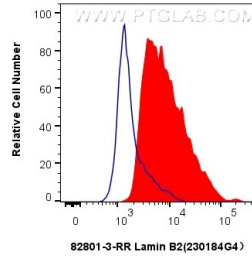
E: proteintech@ptglab.com
W: ptglab.com

This product is exclusively available under Proteintech Group brand and is not available to purchase from any other manufacturer.

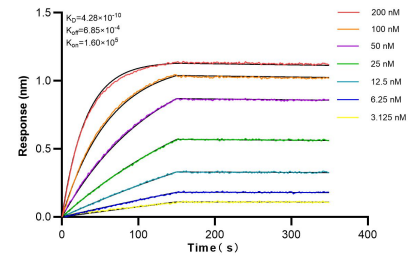
Selected Validation Data



Immunofluorescent analysis of (4% PFA) fixed HepG2 cells using Lamin B2 antibody (82801-3-RR, Clone: 230184G4) at dilution of 1:800 and CoraLite®488-Conjugated AffiniPure Goat Anti-Rabbit IgG(H+L) (SA00013-2), CL594-phalloidin (red). This data was developed using the same antibody clone with 82801-3-PBS in a different storage buffer formulation.



1×10^6 HepG2 cells were intracellularly stained with 0.25 μ g Lamin B2 Recombinant antibody (82801-3-RR, Clone:230184G4) and CoraLite®488-Conjugated Goat Anti-Rabbit IgG(H+L) (SA00013-2)(red), or 0.25 μ g Rabbit IgG Isotype Control Recombinant Antibody (98136-1-RR, Clone: 240953C9) (blue). Cells were fixed and permeabilized with Transcription Factor Staining Buffer Kit (PF00011). This data was developed using the same antibody clone with 82801-3-PBS in a



Bi-layer interferometry (BLI) kinetic assays of 82801-3-RR against Human Lamin B2 were performed. The affinity constant is 0.428 nM.