

For Research Use Only

Lamin B2 Recombinant antibody, PBS Only



Catalog Number: 82801-2-PBS

Basic Information

Catalog Number: 82801-2-PBS	GenBank Accession Number: BC006551	Purification Method: Protein A purification
Size: 100ug , Concentration: 1mg/ml by Nanodrop;	GeneID (NCBI): 84823	CloneNo.: 230184E7
Source: Rabbit	UNIPROT ID: Q03252	
Isotype: IgG	Full Name: lamin B2	
Immunogen Catalog Number: AG1335	Calculated MW: 68 kDa	
	Observed MW: 68 kDa	

Applications

Tested Applications:
Indirect ELISA, IF/ICC, WB

Species Specificity:
human

Background Information

Lamins are nuclear membrane structural components that are important in structural integrity of the nucleus and may also interact with chromatin (PMID: 33033404). Research studies show that lamin B2 knockout mice exhibit neuronal developmental defects and that both proteins are essential for typical brain development (PMID: 20145110). Mutations in Lamin B2 can result in a susceptibility to developing acquired partial lipodystrophy, a rare disorder characterized by the progressive loss of subcutaneous fat in a bilaterally symmetrical fashion (PMID: 16826530).

Storage

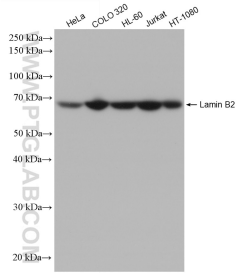
Storage:
Store at -80°C.

Storage Buffer:
PBS Only

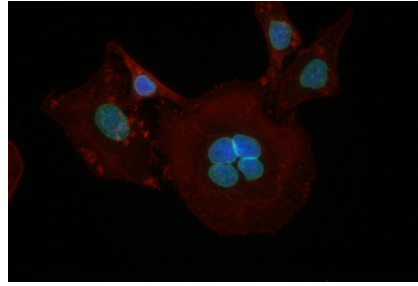
For technical support and original validation data for this product please contact:
T: 1 (888) 4PTGLAB (1-888-478-4522) (toll free in USA), or 1(312) 455-8498 (outside USA)
E: proteintech@ptglab.com
W: ptglab.com

This product is exclusively available under Proteintech Group brand and is not available to purchase from any other manufacturer.

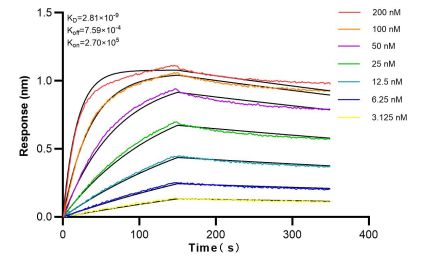
Selected Validation Data



Various lysates were subjected to SDS PAGE followed by western blot with 82801-2-RR (Lamin B2 antibody) at dilution of 1:4000 incubated at room temperature for 1.5 hours. This data was developed using the same antibody clone with 82801-2-PBS in a different storage buffer formulation.



Immunofluorescent analysis of (4% PFA) fixed HepG2 cells using Lamin B2 antibody (82801-2-RR, Clone: 230184E7) at dilution of 1:400 and CoraLite®488-Conjugated AffiniPure Goat Anti-Rabbit IgG(H+L). This data was developed using the same antibody clone with 82801-2-PBS in a different storage buffer formulation.



Bi-layer interferometry (BLI) kinetic assays of 82801-2-RR against Human Lamin B2 were performed. The affinity constant is 2.81 nM.