

For Research Use Only

Albumin Recombinant antibody, PBS Only

Catalog Number:82783-6-PBS



Basic Information

Catalog Number: 82783-6-PBS	GenBank Accession Number: BC034023	Purification Method: Protein A purification
Size: 100ug , Concentration: 1mg/ml by Nanodrop;	GeneID (NCBI): 213	CloneNo.: 4K1
Source: Rabbit	UNIPROT ID: P02768	
Isotype: IgG	Full Name: albumin	
Immunogen Catalog Number: AG9569	Calculated MW: 609 aa, 69 kDa	
	Observed MW: 66 kDa	

Applications

Tested Applications:
WB, IHC, IF/ICC, IF-P, Indirect ELISA

Species Specificity:
human, mouse, rat

Background Information

Albumin is the most abundant protein in blood plasma. Alterations of level of serum albumin are linked to variety of diseases. Albumin is expressed exclusively by well-differentiated hepatocytes, thus anti-albumin has been used to mark hepatocytes. (21388516, 23832071)

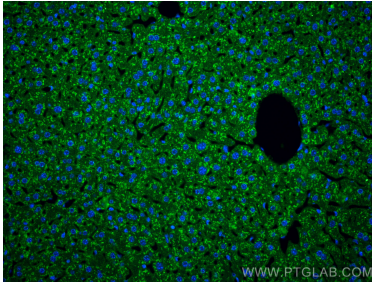
Storage

Storage:
Store at -80°C.
Storage Buffer:
PBS Only

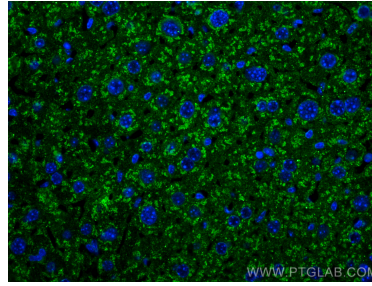
For technical support and original validation data for this product please contact:
T: 1 (888) 4PTGLAB (1-888-478-4522) (toll free in USA), or 1(312) 455-8498 (outside USA) E: proteintech@ptglab.com
W: ptglab.com

This product is exclusively available under Proteintech Group brand and is not available to purchase from any other manufacturer.

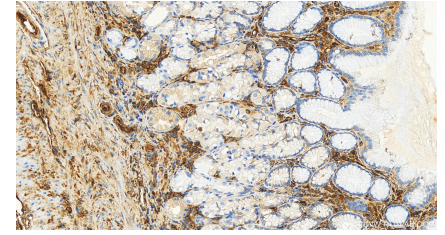
Selected Validation Data



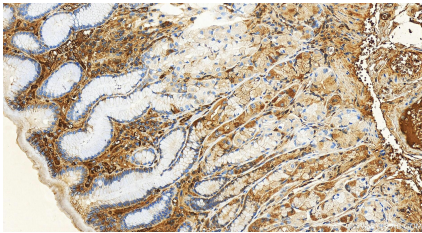
Immunofluorescent analysis of (4% PFA) fixed paraffin-embedded mouse liver tissue using Albumin antibody (82783-6-RR, Clone: 4K1) at dilution of 1:200 and CoraLite®488-Conjugated AffiniPure Goat Anti-Rabbit IgG(H+L) (SA00013-2). Heat mediated antigen retrieval with Tris-EDTA buffer (pH 9.0). This data was developed using the same antibody clone with 82783-6-PBS in a different storage buffer formulation.



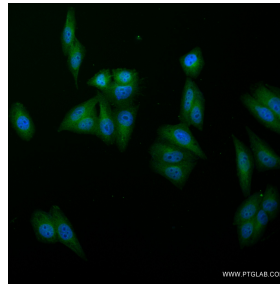
Immunofluorescent analysis of (4% PFA) fixed paraffin-embedded mouse liver tissue using Albumin antibody (82783-6-RR, Clone: 4K1) at dilution of 1:200 and CoraLite®488-Conjugated AffiniPure Goat Anti-Rabbit IgG(H+L) (SA00013-2). Heat mediated antigen retrieval with Tris-EDTA buffer (pH 9.0). This data was developed using the same antibody clone with 82783-6-PBS in a different storage buffer formulation.



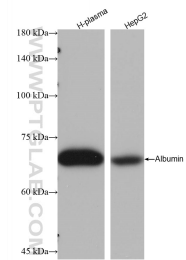
Immunohistochemical analysis of paraffin-embedded human stomach tissue slide using 82783-6-RR (Albumin antibody) at dilution of 1:10000 (under 20x lens). Heat mediated antigen retrieval with Tris-EDTA buffer (pH 9.0). This data was developed using the same antibody clone with 82783-6-PBS in a different storage buffer formulation.



Immunohistochemical analysis of paraffin-embedded human stomach tissue slide using 82783-6-RR (Albumin antibody) at dilution of 1:10000 (under 20x lens). Heat mediated antigen retrieval with Tris-EDTA buffer (pH 9.0). This data was developed using the same antibody clone with 82783-6-PBS in a different storage buffer formulation.



Immunofluorescent analysis of (4% PFA) fixed HepG2 cells using Albumin antibody (82783-6-RR, Clone: 4K1) at dilution of 1:600 and CoraLite®488-Conjugated AffiniPure Goat Anti-Rabbit IgG(H+L) (SA00013-2). This data was developed using the same antibody clone with 82783-6-PBS in a different storage buffer formulation.



Various lysates were subjected to SDS PAGE followed by western blot with 82783-6-RR (Albumin antibody) at dilution of 1:20000 incubated at room temperature for 1.5 hours. This data was developed using the same antibody clone with 82783-6-PBS in a different storage buffer formulation.