

For Research Use Only

Beta Arrestin 2 Recombinant antibody, PBS Only (Capture/Detector)

Catalog Number: 82780-4-PBS



Basic Information

Catalog Number: 82780-4-PBS	GenBank Accession Number: BC007427	Purification Method: Protein A purification
Size: 100ug, Concentration: 1 mg/ml by Nanodrop;	GeneID (NCBI): 409	CloneNo.: 241470C1
Source: Rabbit	UNIPROT ID: P32121	
Isotype: IgG	Full Name: arrestin, beta 2	
Immunogen Catalog Number: AG0227	Calculated MW: 46 kDa	

Applications

Tested Applications:
Cytometric bead array, Sandwich ELISA, Indirect ELISA,
Sample test

Species Specificity:
human

Product Information

82780-4-PBS targets Beta Arrestin 2 as part of a matched antibody pair:

MP01125-1: 82780-4-PBS capture and 82780-3-PBS detection (validated in Cytometric bead array)

MP01125-2: 82780-4-PBS capture and 82780-2-PBS detection (validated in Cytometric bead array)

MP01125-4: 82780-7-PBS capture and 82780-4-PBS detection (validated in Sandwich ELISA)

Unconjugated rabbit recombinant monoclonal antibody in PBS only (BSA and azide free) storage buffer at a concentration of 1 mg/mL, ready for conjugation. Created using Proteintech's proprietary in-house recombinant technology. Recombinant production enables unrivalled batch-to-batch consistency, easy scale-up, and future security of supply.

This conjugation ready format makes antibodies ideal for use in many applications including: ELISAs, multiplex assays requiring matched pairs, mass cytometry, and multiplex imaging applications. Antibody use should be optimized by the end user for each application and assay.

Storage

Storage:
Store at -80°C.
Storage Buffer:
PBS Only

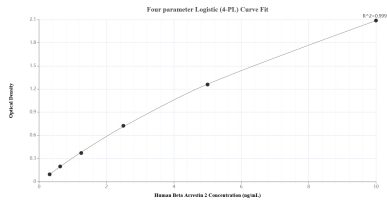
For technical support and original validation data for this product please contact:

T: 1 (888) 4PTGLAB (1-888-478-4522) (toll free
in USA), or 1(312) 455-8498 (outside USA)

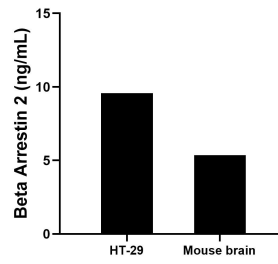
E: proteintech@ptglab.com
W: ptglab.com

This product is exclusively available under Proteintech Group brand and is not available to purchase from any other manufacturer.

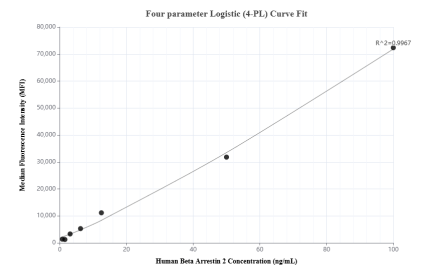
Selected Validation Data



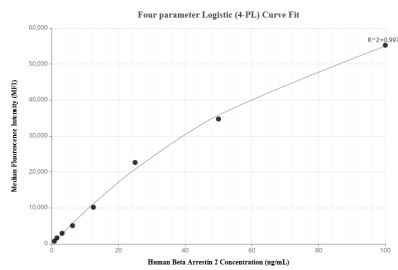
Sandwich ELISA standard curve of MP01125-4, Human Beta Arrestin 2 Recombinant Matched Antibody Pair - PBS only. 82780-7-PBS was coated to a plate as the capture antibody and incubated with serial dilutions of standard Ag0227. 82780-4-PBS was HRP conjugated as the detection antibody. Range: 0.313-10 ng/mL



The mean Beta Arrestin 2 concentration was determined to be 9.58 ng/mL in HT-29 cell extract based on a 1.30 mg/mL extract load and 5.35 ng/mL in mouse brain cell extract based on a 2.00 mg/mL extract load.



Cytometric bead array standard curve of MP01125-1, Beta Arrestin 2 Recombinant Matched Antibody Pair, PBS Only. Capture antibody: 82780-4-PBS. Detection antibody: 82780-3-PBS. Standard: Ag0227. Range: 0.781-100 ng/mL



Cytometric bead array standard curve of MP01125-2, Beta Arrestin 2 Recombinant Matched Antibody Pair, PBS Only. Capture antibody: 82780-4-PBS. Detection antibody: 82780-2-PBS. Standard: Ag0227. Range: 0.781-100 ng/mL