

For Research Use Only

# IL-22 Recombinant antibody, PBS Only (Capture)

Catalog Number: 82766-12-PBS



## Basic Information

<b>Catalog Number:</b> 82766-12-PBS	<b>GenBank Accession Number:</b> BC070261	<b>Purification Method:</b> Protein A purification
<b>Size:</b> 100ug, Concentration: 1 mg/ml by Nanodrop;	<b>GeneID (NCBI):</b> 50616	<b>CloneNo.:</b> 240699D1
<b>Source:</b> Rabbit	<b>UNIPROT ID:</b> Q9GZX6	
<b>Isotype:</b> IgG	<b>Full Name:</b> interleukin 22	
	<b>Calculated MW:</b> 179 aa, 20 kDa	

## Applications

**Tested Applications:**  
Cytometric bead array, Sandwich ELISA, Indirect ELISA, Sample test

**Species Specificity:**  
human

## Product Information

82766-12-PBS targets IL-22 as part of a matched antibody pair:

MP00657-1: 82766-12-PBS capture and 82766-13-PBS detection (validated in Cytometric bead array)

MP00657-2: 82766-12-PBS capture and 82766-11-PBS detection (validated in Cytometric bead array, Sandwich ELISA)

MP00657-3: 82766-12-PBS capture and 82766-14-PBS detection (validated in Cytometric bead array)

Unconjugated rabbit recombinant monoclonal antibody in PBS only (BSA and azide free) storage buffer at a concentration of 1 mg/mL, ready for conjugation. Created using Proteintech's proprietary in-house recombinant technology. Recombinant production enables unrivalled batch-to-batch consistency, easy scale-up, and future security of supply.

This conjugation ready format makes antibodies ideal for use in many applications including: ELISAs, multiplex assays requiring matched pairs, mass cytometry, and multiplex imaging applications. Antibody use should be optimized by the end user for each application and assay.

## Storage

**Storage:**  
Store at -80°C.  
**Storage Buffer:**  
PBS Only

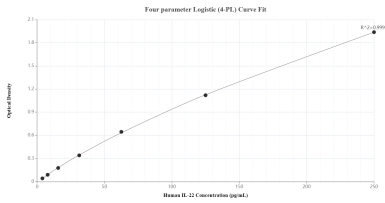
For technical support and original validation data for this product please contact:

T: 1 (888) 4PTGLAB (1-888-478-4522) (toll free in USA), or 1(312) 455-8498 (outside USA)

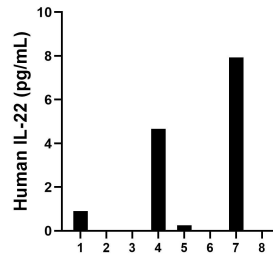
E: [proteintech@ptglab.com](mailto:proteintech@ptglab.com)  
W: [ptglab.com](http://ptglab.com)

**This product is exclusively available under Proteintech Group brand and is not available to purchase from any other manufacturer.**

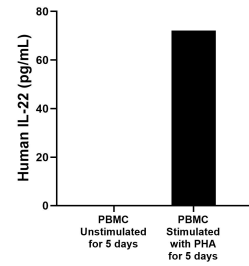
## Selected Validation Data



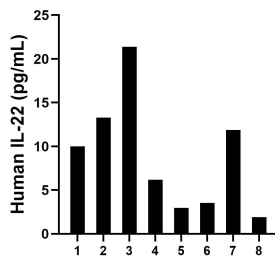
Sandwich ELISA standard curve of MP00657-2, Human IL-22 Recombinant Matched Antibody Pair - PBS only. 82766-12-PBS was coated to a plate as the capture antibody and incubated with serial dilutions of standard Eg0228. 82766-11-PBS was HRP conjugated as the detection antibody. Range: 3.91-250 pg/mL.



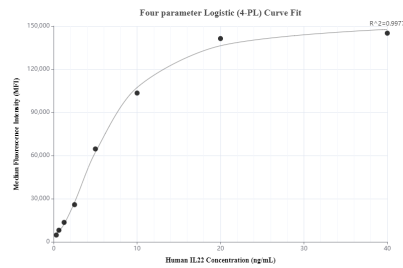
Urine of eight individual healthy human donors was measured. The IL-22 concentration of detected samples was determined to be 2.8 pg/mL with a range of ND - 7.9 pg/mL.



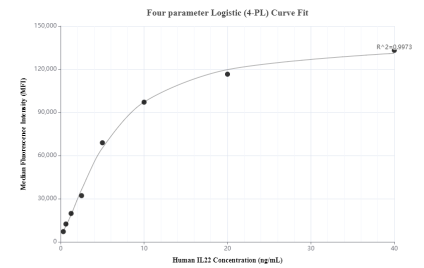
Human peripheral blood mononuclear cells (PBMC) were cultured unstimulated or stimulated with 10 µg/mL PHA for 5 days. The mean IL-22 concentration was not determined in unstimulated PBMC supernatant, 72.1 pg/mL in PHA stimulated PBMC supernatant.



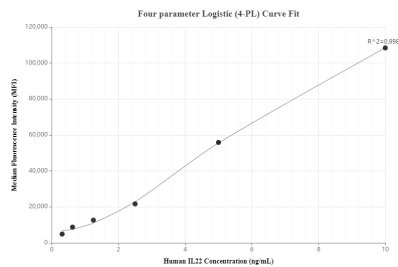
Serum of eight individual healthy human donors was measured. The IL-22 concentration of detected samples was determined to be 8.9 pg/mL with a range of ND - 21.4 pg/mL.



Cytometric bead array standard curve of MP00657-1, IL-22 Recombinant Matched Antibody Pair, PBS Only. Capture antibody: 82766-12-PBS. Detection antibody: 82766-13-PBS. Standard: Eg0228. Range: 0.313-40 ng/mL.



Cytometric bead array standard curve of MP00657-2, IL-22 Recombinant Matched Antibody Pair, PBS Only. Capture antibody: 82766-12-PBS. Detection antibody: 82766-11-PBS. Standard: Eg0228. Range: 0.313-40 ng/mL.



Cytometric bead array standard curve of MP00657-3, IL-22 Recombinant Matched Antibody Pair, PBS Only. Capture antibody: 82766-12-PBS. Detection antibody: 82766-14-PBS. Standard: Eg0228. Range: 0.313-10 ng/mL.