

For Research Use Only

IGF2BP2 Recombinant antibody, PBS Only

Catalog Number: 82757-2-PBS



Basic Information

Catalog Number: 82757-2-PBS	GenBank Accession Number: BC021290	Purification Method: Protein A purification
Size: 100ug, Concentration: 1mg/ml by Nanodrop;	GeneID (NCBI): 10644	CloneNo.: 6L8
Source: Rabbit	UNIPROT ID: Q9Y6M1	
Isotype: IgG	Full Name: insulin-like growth factor 2 mRNA binding protein 2	
Immunogen Catalog Number: AG2142	Calculated MW: 594 aa, 65 kDa	
	Observed MW: 55-65 kDa	

Applications

Tested Applications:
WB, IP, IHC, Indirect ELISA

Species Specificity:
Human, mouse, rat

Background Information

Insulin-like growth factor 2 mRNA-binding protein 2(IGF2BP2), is a member of a family of mRNA binding protein, which can bind to several mammalian cells' mRNAs. Thus it may involve in the regulation of translation of mRNA. IGF2BP2's polymorphisms is risk factor for developing type 2 diabetes. This antibody raise against part of N-terminus of human IGF2BP2. IGF2BP2 has some isoforms with the MW of 54-66 kDa. Some literature has reported that multiple bands can be detected (PMID: 22427968, 36322753, 23069990).

Storage

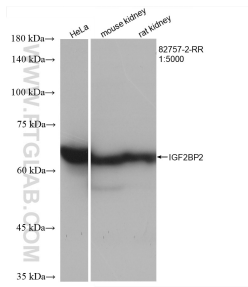
Storage:
Store at -80°C.

Storage Buffer:
PBS Only

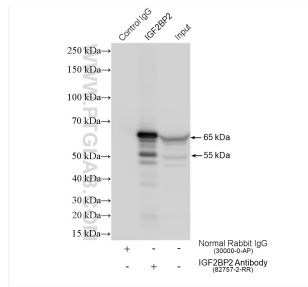
For technical support and original validation data for this product please contact:
T: 1 (888) 4PTGLAB (1-888-478-4522) (toll free in USA), or 1(312) 455-8498 (outside USA) E: proteintech@ptglab.com
W: ptglab.com

This product is exclusively available under Proteintech Group brand and is not available to purchase from any other manufacturer.

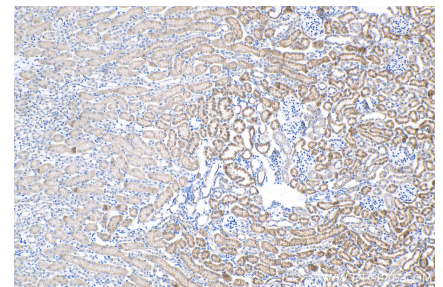
Selected Validation Data



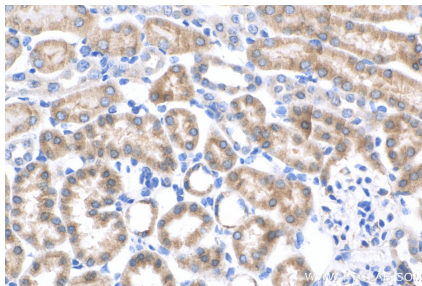
Various lysates were subjected to SDS PAGE followed by western blot with 82757-2-RR (IGF2BP2 antibody) at dilution of 1:5000 incubated at room temperature for 1.5 hours. This data was developed using the same antibody clone with 82757-2-PBS in a different storage buffer formulation.



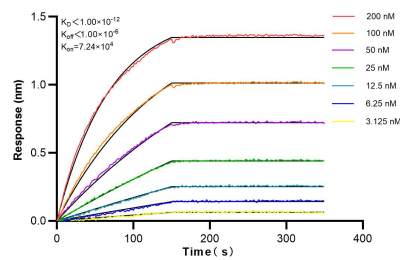
IP result of anti-IGF2BP2 (IP:82757-2-RR, 4ug; Detection:82757-2-RR 1:4000) with HEK-293 cells lysate 1480 ug. This data was developed using the same antibody clone with 82757-2-PBS in a different storage buffer formulation.



Immunohistochemical analysis of paraffin-embedded mouse kidney tissue slide using 82757-2-RR (IGF2BP2 antibody) at dilution of 1:1000 (under 10x lens). Heat mediated antigen retrieval with Tris-EDTA buffer (pH 9.0). This data was developed using the same antibody clone with 82757-2-PBS in a different storage buffer formulation.



Immunohistochemical analysis of paraffin-embedded mouse kidney tissue slide using 82757-2-RR (IGF2BP2 antibody) at dilution of 1:1000 (under 40x lens). Heat mediated antigen retrieval with Tris-EDTA buffer (pH 9.0). This data was developed using the same antibody clone with 82757-2-PBS in a different storage buffer formulation.



Biolayer interferometry (BLI) kinetic assays of 82757-2-RR against Human IGF2BP2 were performed. The affinity constant is below 1 pM.