

For Research Use Only

Integrin Beta 1 Recombinant antibody, PBS Only

Catalog Number: 82729-3-PBS



Basic Information

Catalog Number:

82729-3-PBS

Size:

100ug, Concentration: 1 mg/ml by
Nanodrop;

Source:

Rabbit

Isotype:

IgG

Immunogen Catalog Number:

AG3078

GenBank Accession Number:

BC020057

GeneID (NCBI):

3688

ENSEMBL Gene ID:

ENSG00000150093

UNIPROT ID:

P05556

Full Name:

integrin, beta 1 (fibronectin receptor,
beta polypeptide, antigen CD29
includes MDF2, MSK12)

Calculated MW:

88 kDa

Observed MW:

110-140 kDa

Purification Method:

Protein A purification

CloneNo.:

1K20

Applications

Tested Applications:

WB, IHC, IF-P, Indirect ELISA

Species Specificity:

human

Background Information

Integrin beta-1 (ITGB1), also named as CD29, is a single chain type I glycoprotein that is expressed in a heterodimeric complex with one of six distinct α subunits, comprising the very late activation antigen (VLA) subfamily of adhesion receptors. It is one of the essential surface molecules expressed on human MSC from bone marrow and other sources. The β 1 subunit is also broadly expressed on lymphocytes and monocytes, weakly expressed on granulocytes, and not expressed on erythrocytes. These receptors are involved in a variety of cell-cell and cell-matrix interactions.

Storage

Storage:

Store at -80°C.

Storage Buffer:

PBS Only

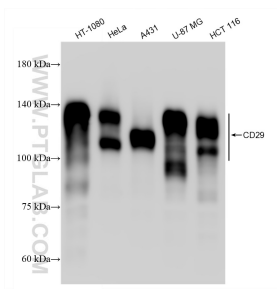
For technical support and original validation data for this product please contact:

T: 1 (888) 4PTGLAB (1-888-478-4522) (toll free
in USA), or 1(312) 455-8498 (outside USA)

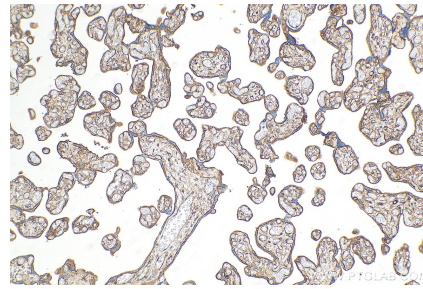
E: proteintech@ptglab.com
W: ptglab.com

This product is exclusively available under Proteintech Group brand and is not available to purchase from any other manufacturer.

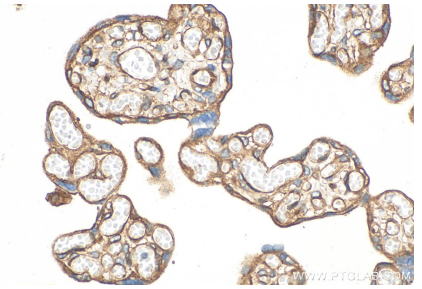
Selected Validation Data



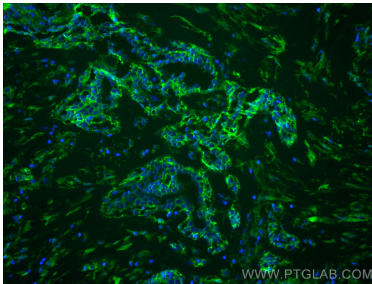
Various lysates were subjected to SDS PAGE followed by western blot with 82729-3-RR (Integrin beta-1 antibody) at dilution of 1:20000 incubated at room temperature for 1.5 hours. This data was developed using the same antibody clone with 82729-3-PBS in a different storage buffer formulation.



Immunohistochemical analysis of paraffin-embedded human placenta tissue slide using 82729-3-RR (Integrin beta-1 antibody) at dilution of 1:1000 (under 10x lens). Heat mediated antigen retrieval with Tris-EDTA buffer (pH 9.0). This data was developed using the same antibody clone with 82729-3-PBS in a different storage buffer formulation.



Immunohistochemical analysis of paraffin-embedded human placenta tissue slide using 82729-3-RR (Integrin beta-1 antibody) at dilution of 1:1000 (under 40x lens). Heat mediated antigen retrieval with Tris-EDTA buffer (pH 9.0). This data was developed using the same antibody clone with 82729-3-PBS in a different storage buffer formulation.



Immunofluorescent analysis of (4% PFA) fixed paraffin-embedded Customer Sample customer using Integrin Beta 1 antibody (82729-3-RR, Clone: 1K20) at dilution of 1:200 and CoraLite@488-Conjugated Goat Anti-Rabbit IgG(H+L) (SA00013-2). Heat mediated antigen retrieval with Tris-EDTA buffer (pH 9.0). This data was developed using the same antibody clone with 82729-3-PBS in a different storage buffer formulation.