

For Research Use Only

CHCHD2 Recombinant antibody, PBS Only

Catalog Number: 82702-1-PBS

Featured Product



Basic Information

Catalog Number: 82702-1-PBS	GenBank Accession Number: BC003079	Purification Method: Protein A purification
Size: 100ug, Concentration: 1mg/ml by Nanodrop;	GeneID (NCBI): 51142	CloneNo.: 4A12
Source: Rabbit	UNIPROT ID: Q9Y6H1	
Isotype: IgG	Full Name: coiled-coil-helix-coiled-coil-helix domain containing 2	
Immunogen Catalog Number: AG13752	Calculated MW: 151 aa, 16 kDa	
	Observed MW: 16 kDa	

Applications

Tested Applications:
WB, IF/ICC, Indirect ELISA

Species Specificity:
human, rat

Background Information

CHCHD2 is a widely expressed 16.7-kDa mitochondrion-localized protein. CHCHD2 contains a C-terminal CHCH (coiled-coil helix coiled-coil helix) domain. Mutations in CHCHD2 gene have been reported in autosomal dominant Parkinson's disease (ADPD). CHCHD2 is a bi-organellar mediator of oxidative phosphorylation, playing crucial roles in regulating electron flow in the mitochondrial electron transport chain and acting as a nuclear transcription factor for a cytochrome c oxidase subunit (COX4l2) and itself in response to hypoxic stress. CHCHD2 also regulates cell migration and differentiation, mitochondrial cristae structure, and apoptosis (PMID: 33967741).

Storage

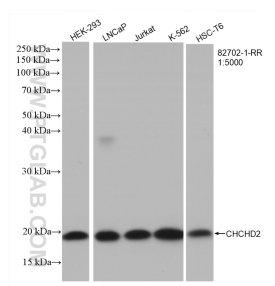
Storage:
Store at -80°C.

Storage Buffer:
PBS Only

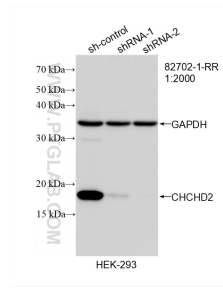
For technical support and original validation data for this product please contact:
T: 1 (888) 4PTGLAB (1-888-478-4522) (toll free in USA), or 1(312) 455-8498 (outside USA) E: proteintech@ptglab.com W: ptglab.com

This product is exclusively available under Proteintech Group brand and is not available to purchase from any other manufacturer.

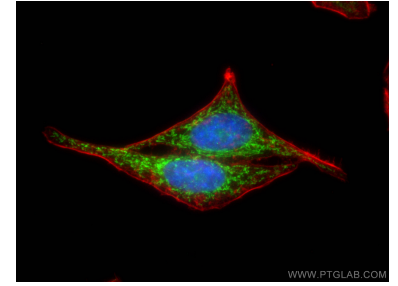
Selected Validation Data



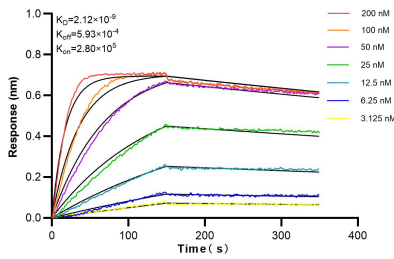
Various lysates were subjected to SDS PAGE followed by western blot with 82702-1-RR (CHCHD2 antibody) at dilution of 1:5000 incubated at room temperature for 1.5 hours. This data was developed using the same antibody clone with 82702-1-PBS in a different storage buffer formulation.



WB result of CHCHD2 antibody (82702-1-RR; 1:2000; incubated at room temperature for 1.5 hours) with sh-Control and sh-CHCHD2 transfected HEK-293 cells. This data was developed using the same antibody clone with 82702-1-PBS in a different storage buffer formulation.



Immunofluorescent analysis of (4% PFA) fixed HepG2 cells using CHCHD2 antibody (82702-1-RR, Clone: 4A12) at dilution of 1:500 and CoraLite®488-Conjugated AffiniPure Goat Anti-Rabbit IgG(H+L), CL594-Phalloidin (red). This data was developed using the same antibody clone with 82702-1-PBS in a different storage buffer formulation.



Biolayer interferometry (BLI) kinetic assays of 82702-1-RR against Human CHCHD2 were performed. The affinity constant is 2.12 nM.