

For Research Use Only

Cyclin E1 Recombinant antibody, PBS Only (Detector)

Catalog Number:82700-8-PBS



Basic Information

Catalog Number: 82700-8-PBS	GenBank Accession Number: BC035498	Purification Method: Protein A purification
Size: 100ug , Concentration: 1 mg/ml by Nanodrop;	GeneID (NCBI): 898	CloneNo.: 240136G9
Source: Rabbit	UNIPROT ID: P24864	
Isotype: IgG	Full Name: cyclin E1	
Immunogen Catalog Number: AG2110	Calculated MW: 410 aa, 47 kDa	
	Observed MW: 47 kDa	

Applications

Tested Applications:
IF/ICC, FC (Intra), Cytometric bead array, Sandwich ELISA, Indirect ELISA, Sample test

Species Specificity:
human

Product Information

82700-8-PBS targets Cyclin E1 as part of a matched antibody pair:

MP00361-2: 82700-6-PBS capture and 82700-8-PBS detection (validated in Cytometric bead array, Sandwich ELISA)

MP00361-3: 82700-5-PBS capture and 82700-8-PBS detection (validated in Cytometric bead array)

Unconjugated rabbit recombinant monoclonal antibody in PBS only (BSA and azide free) storage buffer at a concentration of 1 mg/mL, ready for conjugation. Created using Proteintech's proprietary in-house recombinant technology. Recombinant production enables unrivalled batch-to-batch consistency, easy scale-up, and future security of supply.

This conjugation ready format makes antibodies ideal for use in many applications including: ELISAs, multiplex assays requiring matched pairs, mass cytometry, and multiplex imaging applications. Antibody use should be optimized by the end user for each application and assay.

Background Information

Cyclin E1 (CCNE1) is a member of the highly conserved cyclin family, whose members are characterized by a dramatic periodicity in protein abundance through the cell cycle. CCNE1, an essential cyclin activating Cdk2, regulates the G1-S phase transition of the mammalian cell division cycle. Its timing expression plays a direct role in the initiation of DNA replication, the control of histone biosynthesis, and the centrosome cycle. CCNE1 is associated with disease progression in various malignancies and is associated clinically with poor prognosis. Two bands of Cyclin E1 were expressed in U2OS and MDA-MB-231 cells (PMID:9858585, PMID: 24112607).

Storage

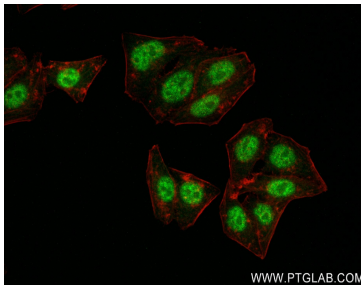
Storage:
Store at -80°C.

Storage Buffer:
PBS Only

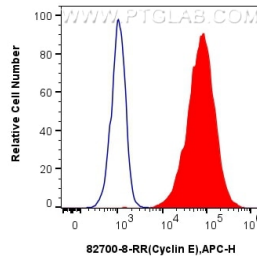
For technical support and original validation data for this product please contact:
T: 1 (888) 4PTGLAB (1-888-478-4522) (toll free in USA), or 1(312) 455-8498 (outside USA)
E: proteintech@ptglab.com
W: ptglab.com

This product is exclusively available under Proteintech Group brand and is not available to purchase from any other manufacturer.

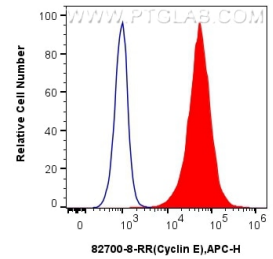
Selected Validation Data



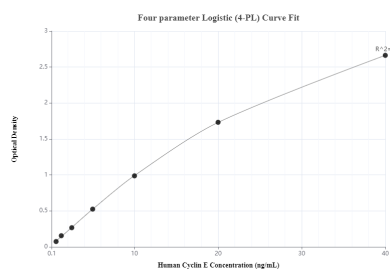
Immunofluorescent analysis of (4% PFA) fixed HepG2 cells using Cyclin E antibody (82700-8-RR, Clone: 240136G9) at dilution of 1:300 and CoraLite@488-Conjugated AffiniPure Goat Anti-Rabbit IgG(H+L) (SA00013-2), CL594-Phalloidin (red). This data was developed using the same antibody clone with 82700-8-PBS in a different storage buffer formulation.



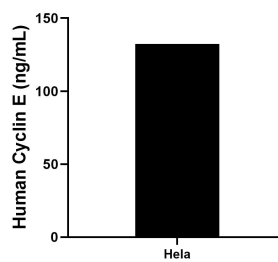
1×10^6 MCF-7 cells were intracellularly stained with 0.2 μ g Cyclin E Recombinant antibody (82700-8-RR, Clone:240136G9) and APC-Conjugated AffiniPure Goat Anti-Rabbit IgG(H+L)(red), or 0.2 μ g Isotype Control (blue). Cells were fixed and permeabilized with Transcription Factor Staining Buffer Kit (PF00011). This data was developed using the same antibody clone with 82700-8-PBS in a different storage buffer formulation.



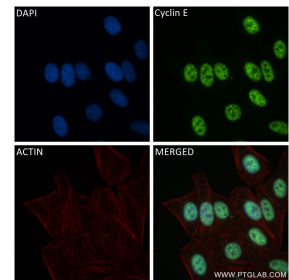
1×10^6 HeLa cells were intracellularly stained with 0.25 μ g Cyclin E Recombinant antibody (82700-8-RR, Clone:240136G9) and APC-Conjugated AffiniPure Goat Anti-Rabbit IgG(H+L)(red), or 0.25 μ g Isotype Control (blue). Cells were fixed and permeabilized with Transcription Factor Staining Buffer Kit (PF00011). This data was developed using the same antibody clone with 82700-8-PBS in a different storage buffer formulation.



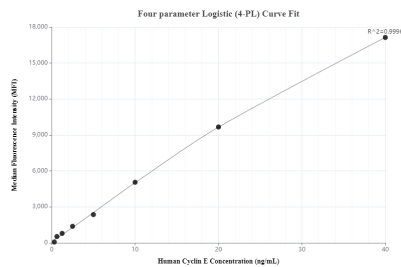
Sandwich ELISA standard curve of MP00361-2, Human Cyclin E1 Monoclonal Matched Antibody Pair - PBS only. 82700-6-PBS was coated to a plate as the capture antibody and incubated with serial dilutions of standard Ag2110. 82700-8-PBS was HRP conjugated as the detection antibody. Range: 0.313-40 ng/mL.



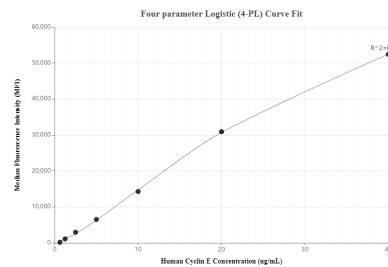
The mean human Cyclin E1 concentration was determined to be 132.4 ng/mL in HeLa cell extract based on a 3.0 mg/mL extract load.



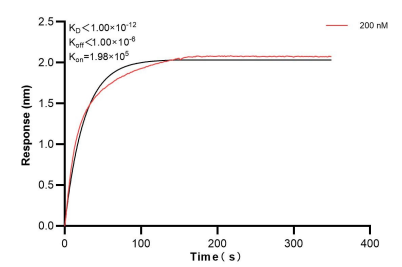
Immunofluorescent analysis of (4% PFA) fixed HepG2 cells using Cyclin E1 antibody (82700-8-RR, Clone: 240136G9) at dilution of 1:300 and CoraLite@488-Conjugated Goat Anti-Rabbit IgG(H+L) (SA00013-2), CL594-Phalloidin (red). This data was developed using the same antibody clone with 82700-8-PBS in a different storage buffer formulation.



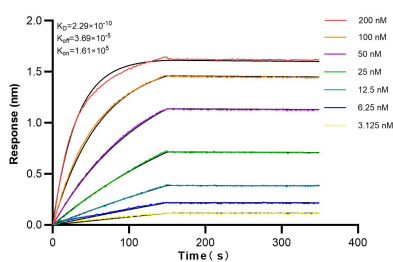
Cytometric bead array standard curve of MP00361-2, Cyclin E1 Recombinant Matched Antibody Pair, PBS Only. Capture antibody: 82700-6-PBS. Detection antibody: 82700-8-PBS. Standard: Ag2110. Range: 0.313-40 ng/mL.



Cytometric bead array standard curve of MP00361-3, Cyclin E1 Recombinant Matched Antibody Pair, PBS Only. Capture antibody: 82700-5-PBS. Detection antibody: 82700-8-PBS. Standard: Ag2110. Range: 0.625-40 ng/mL.



Bi-layer interferometry (BLI) kinetic assay of 82700-8-PBS against Human Cyclin E1 was performed. The affinity constant is below 1 pM.



Biolayer interferometry (BLI) kinetic assays of 82700-8-RR against Human Cyclin E1 were performed. The affinity constant is 0.229 nM.