

For Research Use Only

# Cyclin E1 Recombinant antibody, PBS Only

Catalog Number: 82700-10-PBS



## Basic Information

<b>Catalog Number:</b> 82700-10-PBS	<b>GenBank Accession Number:</b> BC035498	<b>Purification Method:</b> Protein A purification
<b>Size:</b> 100ug, Concentration: 1 mg/ml by Nanodrop;	<b>GeneID (NCBI):</b> 898	<b>CloneNo.:</b> 240136D4
<b>Source:</b> Rabbit	<b>UNIPROT ID:</b> P24864	
<b>Isotype:</b> IgG	<b>Full Name:</b> cyclin E1	
<b>Immunogen Catalog Number:</b> AG2110	<b>Calculated MW:</b> 410 aa, 47 kDa	
	<b>Observed MW:</b> 45 kDa	

## Applications

**Tested Applications:**  
WB, FC (Intra), ELISA

**Species Specificity:**  
human, rat

## Background Information

Cyclin E1 (CCNE1) is a member of the highly conserved cyclin family, whose members are characterized by a dramatic periodicity in protein abundance through the cell cycle. CCNE1, an essential cyclin activating Cdk2, regulates the G1-S phase transition of the mammalian cell division cycle. Its timing expression plays a direct role in the initiation of DNA replication, the control of histone biosynthesis, and the centrosome cycle. CCNE1 is associated with disease progression in various malignancies and is associated clinically with poor prognosis. Two bands of Cyclin E1 were expressed in U2OS and MDA-MB-231 cells (PMID:9858585, PMID: 24112607).

## Storage

**Storage:**  
Store at -80°C.

**Storage Buffer:**  
PBS Only

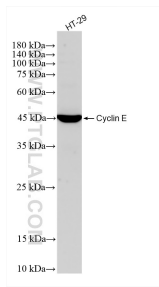
For technical support and original validation data for this product please contact:

T: 1 (888) 4PTGLAB (1-888-478-4522) (toll free in USA), or 1(312) 455-8498 (outside USA)

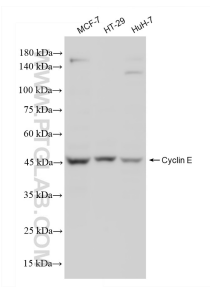
E: [proteintech@ptglab.com](mailto:proteintech@ptglab.com)  
W: [ptglab.com](http://ptglab.com)

**This product is exclusively available under Proteintech Group brand and is not available to purchase from any other manufacturer.**

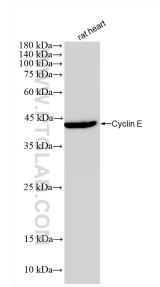
## Selected Validation Data



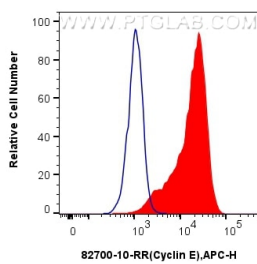
HT-29 cells were subjected to SDS PAGE followed by western blot with 82700-10-RR (Cyclin E antibody) at dilution of 1:1000 incubated at room temperature for 1.5 hours. This data was developed using the same antibody clone with 82700-10-PBS in a different storage buffer formulation.



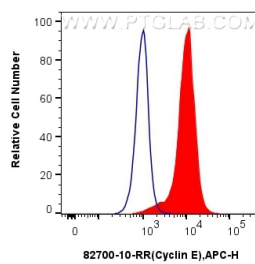
Various lysates were subjected to SDS PAGE followed by western blot with 82700-10-RR (Cyclin E antibody) at dilution of 1:1000 incubated at room temperature for 1.5 hours. This data was developed using the same antibody clone with 82700-10-PBS in a different storage buffer formulation.



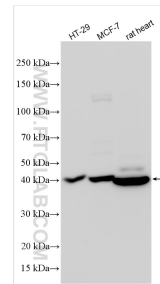
rat heart tissue were subjected to SDS PAGE followed by western blot with 82700-10-RR (Cyclin E antibody) at dilution of 1:1000 incubated at room temperature for 1.5 hours. This data was developed using the same antibody clone with 82700-10-PBS in a different storage buffer formulation.



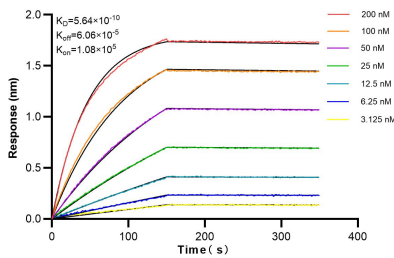
1x10<sup>6</sup> MCF-7 cells were intracellularly stained with 0.25 ug Cyclin E Recombinant Antibody (82700-10-RR, Clone:240136D4) and APC-Conjugated AffiniPure Goat Anti-Rabbit IgG(H+L) (red), or 0.25 ug Isotype Control (blue). Cells were fixed and permeabilized with Transcription Factor Staining Buffer Kit (PF00011). This data was developed using the same antibody clone with 82700-10-PBS in a different storage buffer formulation.



1x10<sup>6</sup> HeLa cells were intracellularly stained with 0.25 ug Cyclin E Recombinant Antibody (82700-10-RR, Clone:240136D4) and APC-Conjugated AffiniPure Goat Anti-Rabbit IgG(H+L)(red), or 0.25 ug Isotype Control (blue). Cells were fixed and permeabilized with Transcription Factor Staining Buffer Kit (PF00011). This data was developed using the same antibody clone with 82700-10-PBS in a different storage buffer formulation.



Various lysates were subjected to SDS PAGE followed by western blot with 82700-10-RR (Cyclin E antibody) at dilution of 1:300 incubated at room temperature for 1.5 hours. This data was developed using the same antibody clone with 82700-10-PBS in a different storage buffer formulation.



Biolayer interferometry (BLI) kinetic assays of 82700-10-RR against Human Cyclin E were performed. The affinity constant is 0.564 nM.