

For Research Use Only

IL-1 beta Recombinant antibody, PBS Only (Capture/Detector)

Catalog Number:82696-8-PBS



Basic Information

Catalog Number:

82696-8-PBS

Size:

100ug, Concentration: 1 mg/ml by Nanodrop;

Source:

Rabbit

Isotype:

IgG

GenBank Accession Number:

BC008678

GeneID (NCBI):

3553

ENSEMBL Gene ID:

ENSG00000125538

UNIPROT ID:

P01584

Full Name:

interleukin 1, beta

Calculated MW:

269 aa, 31 kDa

Purification Method:

Protein A purification

CloneNo.:

2G9

Applications

Tested Applications:

Cytometric bead array, Sandwich ELISA, Indirect ELISA, Sample test

Species Specificity:

human

Product Information

82696-8-PBS targets IL-1 beta as part of a matched antibody pair:

MP00331-2: 82696-15-PBS capture and 82696-8-PBS detection (validated in Cytometric bead array, Sandwich ELISA)

MP80001-6: 82696-8-PBS capture and 66737-1-PBS detection (validated in Sandwich ELISA)

Unconjugated rabbit recombinant monoclonal antibody in PBS only (BSA and azide free) storage buffer at a concentration of 1 mg/mL, ready for conjugation. Created using Proteintech's proprietary in-house recombinant technology. Recombinant production enables unrivalled batch-to-batch consistency, easy scale-up, and future security of supply.

This conjugation ready format makes antibodies ideal for use in many applications including: ELISAs, multiplex assays requiring matched pairs, mass cytometry, and multiplex imaging applications. Antibody use should be optimized by the end user for each application and assay.

Storage

Storage:

Store at -80°C.

Storage Buffer:

PBS Only

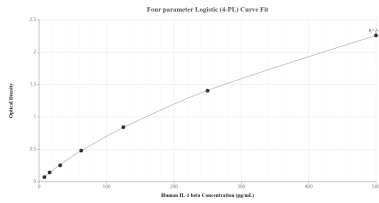
For technical support and original validation data for this product please contact:

T: 1 (888) 4PTGLAB (1-888-478-4522) (toll free in USA), or 1(312) 455-8498 (outside USA)

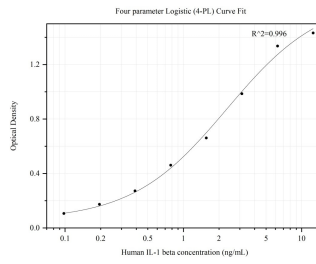
E: proteintech@ptglab.com
W: ptglab.com

This product is exclusively available under Proteintech Group brand and is not available to purchase from any other manufacturer.

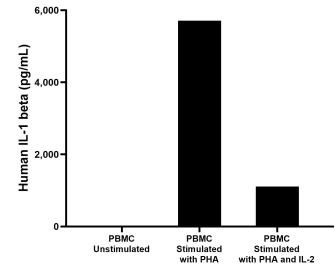
Selected Validation Data



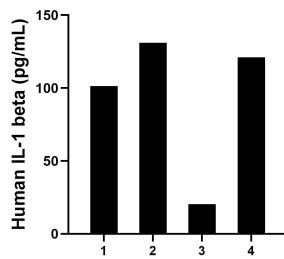
Sandwich ELISA standard curve of MP00331-2, Human IL-1 beta Recombinant Matched Antibody Pair - PBS only. 82696-15-PBS was coated to a plate as the capture antibody and incubated with serial dilutions of standard Eg0286. 82696-8-PBS was HRP conjugated as the detection antibody. Range: 7.8-500 pg/mL



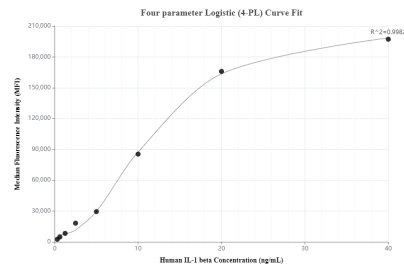
Sandwich ELISA standard curve of MP80001-6, IL-1 beta Hybrid Matched Antibody Pair, PBS Only. Capture antibody: 82696-8-RR. Detection antibody: HRP-conjugated 66737-1-PBS. Standard:HZ-1164. Range: 0.098-12.5 ng/mL



Human peripheral blood mononuclear cells (PBMC) were cultured unstimulated or stimulated with 10 µg/mL PHA or 10 µg/mL PHA and 10 ng/mL IL-2 for 1 day. The mean IL-1 beta concentration was not determined in unstimulated PBMC supernatant, 5,709.3 pg/mL in PHA stimulated PBMC supernatant and 1,110.8 pg/mL in PHA and IL-2 stimulated PBMC supernatant.



Serum of four individual healthy human donors was measured. The IL-1 beta concentration of detected samples was determined to be 93.4 pg/mL with a range of 20.3 - 131.0 pg/mL



Cytometric bead array standard curve of MP00331-2, IL-1 beta Recombinant Matched Antibody Pair, PBS Only. Capture antibody: 82696-15-PBS. Detection antibody: 82696-8-PBS. Standard: Eg0286. Range: 0.313-40 ng/mL