

For Research Use Only

# IL-1 beta Recombinant antibody

Catalog Number: 82696-15-RR



## Basic Information

<b>Catalog Number:</b> 82696-15-RR	<b>GenBank Accession Number:</b> BC008678	<b>Purification Method:</b> Protein A purification
<b>Size:</b> 100ul , Concentration: 1000 ug/ml by Nanodrop;	<b>GeneID (NCBI):</b> 3553	<b>CloneNo.:</b> 240902D6
<b>Source:</b> Rabbit	<b>ENSEMBL Gene ID:</b> ENSG00000125538	<b>Recommended Dilutions:</b> WB 1:2000-1:10000 IF/ICC 1:200-1:800
<b>Isotype:</b> IgG	<b>UNIPROT ID:</b> P01584	
	<b>Full Name:</b> interleukin 1, beta	
	<b>Calculated MW:</b> 269 aa, 31 kDa	
	<b>Observed MW:</b> 30-35 kDa	

## Applications

<b>Tested Applications:</b> WB, IF/ICC, ELISA	<b>Positive Controls:</b>
<b>Species Specificity:</b> human	<b>WB :</b> LPS and Brefeldin A treated THP-1 cells, A431 cells, HT-1080 cells, U-87 MG cells
	<b>IF/ICC :</b> LPS and Brefeldin A treated THP-1 cells,

## Background Information

Interleukin-1 is a pro-inflammatory cytokine with multiple biological effects. The IL-1 gene family encodes three proteins: IL-1 $\alpha$ , IL-1 $\beta$  and their naturally occurring inhibitor IL-1RN. IL-1 Beta(IL-1 $\beta$ ), mainly produced by blood monocytes and tissue macrophages, has been implicated in mediating both acute and chronic inflammation. IL-1 $\beta$  is known to be involved in a variety of cellular activities, including cell proliferation, differentiation and apoptosis. IL-1 $\beta$  is emerging as a key mediator of carcinogenesis that characterizes host-environment interactions. Human IL-1 $\beta$  is synthesized as a 31 kDa precursor. To gain activity, the precursor must be cleaved by caspase-1 between Asp116 and Ala117 to yield a 17 kDa mature form.

## Storage

**Storage:**  
Store at -20°C. Stable for one year after shipment.  
**Storage Buffer:**  
PBS with 0.02% sodium azide and 50% glycerol pH 7.3.  
Aliquoting is unnecessary for -20°C storage

\*\*\* 20ul sizes contain 0.1% BSA

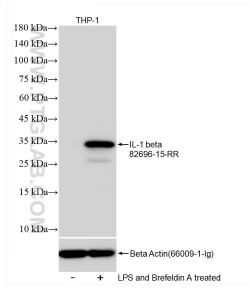
For technical support and original validation data for this product please contact:

T: 1 (888) 4PTGLAB (1-888-478-4522) (toll free in USA), or 1(312) 455-8498 (outside USA)

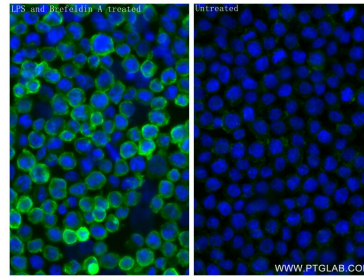
E: [proteintech@ptglab.com](mailto:proteintech@ptglab.com)  
W: [ptglab.com](http://ptglab.com)

This product is exclusively available under Proteintech Group brand and is not available to purchase from any other manufacturer.

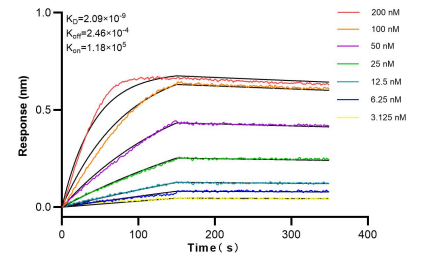
## Selected Validation Data



LPS and Brefeldin A treated THP-1 cells were subjected to SDS PAGE followed by western blot with 82696-15-RR (IL-1 beta antibody) at dilution of 1:5000 incubated at room temperature for 1.5 hours.



Immunofluorescent analysis of (4% PFA) fixed LPS and Brefeldin A treated THP-1 cells using IL-1 beta antibody (82696-15-RR, Clone: 240902D6) at dilution of 1:400 and CoraLite®488-Conjugated Goat Anti-Rabbit IgG(H+L) (SA00013-2).



Bi-layer interferometry (BLI) kinetic assays of 82696-15-RR against Human IL-1 beta were performed. The affinity constant is 2.09 nM.