

For Research Use Only

INPP5E Recombinant antibody

Catalog Number: 82689-3-RR



Basic Information

Catalog Number:

82689-3-RR

Size:

100ul, Concentration: 1000 ug/ml by Nanodrop;

Source:

Rabbit

Isotype:

IgG

Immunogen Catalog Number:

AG30305

GenBank Accession Number:

BC028032

GeneID (NCBI):

56623

UNIPROT ID:

Q9NRR6

Full Name:

inositol polyphosphate-5-phosphatase, 72 kDa

Calculated MW:

644 aa, 70 kDa

Observed MW:

64-66 kDa

Purification Method:

Protein A purification

CloneNo.:

1E7

Recommended Dilutions:

IF/ICC 1:200-1:800

Applications

Tested Applications:

IF/ICC, ELISA

Species Specificity:

human

Positive Controls:

IF/ICC : Starvation treated hTERT-RPE1 cells,

Background Information

INPP5E (72 kDa inositol polyphosphate 5-phosphatase) converts phosphatidylinositol 3,4,5-trisphosphate (PtdIns 3,4,5-P₃) to PtdIns-P₂. In mouse, highest protein expression was in brain, heart, and testis, with lower expression in thymus and lung, and very little expression in kidney, spleen, and liver (PMID:10764818). Defects in INPP5E are the cause of Joubert syndrome type 1 (JBT51) and mental retardation-truncal obesity-retinal dystrophy-micropenis (MORMS) (PMID:19668215). It has 2 isoforms with the molecular mass of 66 kDa and 70 kDa.

Storage

Storage:

Store at -20°C. Stable for one year after shipment.

Storage Buffer:

PBS with 0.02% sodium azide and 50% glycerol pH 7.3.

Aliquoting is unnecessary for -20°C storage

*** 20ul sizes contain 0.1% BSA

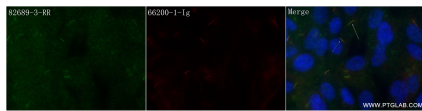
For technical support and original validation data for this product please contact:

T: 1 (888) 4PTGLAB (1-888-478-4522) (toll free in USA), or 1(312) 455-8498 (outside USA)

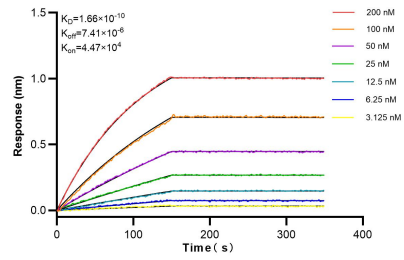
E: proteintech@ptglab.com
W: ptglab.com

This product is exclusively available under Proteintech Group brand and is not available to purchase from any other manufacturer.

Selected Validation Data



Immunofluorescent analysis of (4% PFA) fixed Starvation treated hTERT-RPE1 cells using INPP5E antibody (82689-3-RR, Clone: 1E7) at dilution of 1:400 and CoraLite®488-Conjugated AffiniPure Goat Anti-Rabbit IgG(H+L) (SA00013-2), Acetyl-Tubulin (Lys40) antibody (66200-1-Ig, Clone: 7E5H8, red).



Biolayer interferometry (BLI) kinetic assays of 82689-3-RR against Human INPP5E were performed. The affinity constant is 0.166 nM.