

For Research Use Only

RPL14 Recombinant antibody, PBS Only

Catalog Number: 82688-1-PBS



Basic Information

Catalog Number: 82688-1-PBS	GenBank Accession Number: BC000606	Purification Method: Protein A purification
Size: 100ug , Concentration: 1mg/ml by Nanodrop;	GeneID (NCBI): 9045	CloneNo.: 2K22
Source: Rabbit	UNIPROT ID: P50914	
Isotype: IgG	Full Name: ribosomal protein L14	
Immunogen Catalog Number: AG6976	Calculated MW: 23 kDa	
	Observed MW: 23-27 kDa	

Applications

Tested Applications:
WB, IF/ICC, Indirect ELISA

Species Specificity:
human

Background Information

RPL14 is a component of the large ribosomal subunit. The protein belongs to the L14E family of ribosomal proteins. It contains a basic region-leucine zipper (bZIP)-like domain.

Storage

Storage:
Store at -80°C.

Storage Buffer:
PBS Only

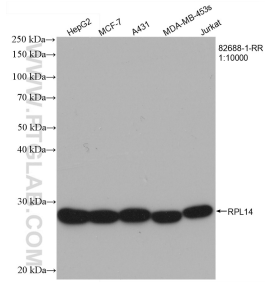
For technical support and original validation data for this product please contact:

T: 1 (888) 4PTGLAB (1-888-478-4522) (toll free in USA), or 1(312) 455-8498 (outside USA)

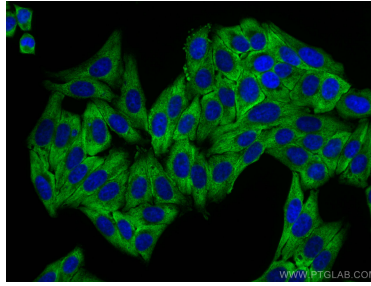
E: proteintech@ptglab.com
W: ptglab.com

This product is exclusively available under Proteintech Group brand and is not available to purchase from any other manufacturer.

Selected Validation Data



Various lysates were subjected to SDS PAGE followed by western blot with 82688-1-RR (RPL14 antibody) at dilution of 1:10000 incubated at room temperature for 1.5 hours. This data was developed using the same antibody clone with 82688-1-PBS in a different storage buffer formulation.



Immunofluorescent analysis of (4% PFA) fixed HepG2 cells using RPL14 antibody (82688-1-RR, Clone: 2K22) at dilution of 1:1000 and CoraLite®488-Conjugated AffiniPure Goat Anti-Rabbit IgG(H+L). This data was developed using the same antibody clone with 82688-1-PBS in a different storage buffer formulation.