

For Research Use Only

MMP-9 Recombinant antibody, PBS Only (Capture)

Catalog Number:82685-18-PBS



Basic Information

Catalog Number:

82685-18-PBS

Size:

100ug , Concentration: 1 mg/ml by Nanodrop;

Source:

Rabbit

Isotype:

IgG

GenBank Accession Number:

BC006093

GeneID (NCBI):

4318

UNIPROT ID:

P14780

Full Name:

matrix metalloproteinase 9 (gelatinase B, 92kDa gelatinase, 92kDa type IV collagenase)

Calculated MW:

707 aa, 78 kDa

Purification Method:

Protein A purification

CloneNo.:

241224C6

Applications

Tested Applications:

Cytometric bead array, Sandwich ELISA, Indirect ELISA, Sample test

Species Specificity:

human

Product Information

82685-18-PBS targets MMP-9 as part of a matched antibody pair:

MP01003-1: 82685-18-PBS capture and 82685-19-PBS detection (validated in Cytometric bead array)

MP01003-2: 82685-18-PBS capture and 82685-16-PBS detection (validated in Cytometric bead array, Sandwich ELISA)

Unconjugated rabbit recombinant monoclonal antibody in PBS only (BSA and azide free) storage buffer at a concentration of 1 mg/mL, ready for conjugation. Created using Proteintech's proprietary in-house recombinant technology. Recombinant production enables unrivalled batch-to-batch consistency, easy scale-up, and future security of supply.

This conjugation ready format makes antibodies ideal for use in many applications including: ELISAs, multiplex assays requiring matched pairs, mass cytometry, and multiplex imaging applications. Antibody use should be optimized by the end user for each application and assay.

Storage

Storage:

Store at -80°C.

Storage Buffer:

PBS Only

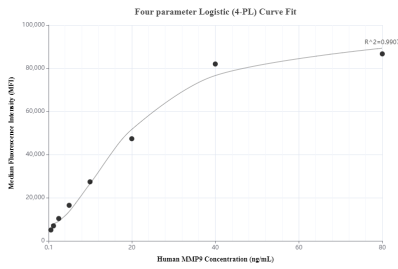
For technical support and original validation data for this product please contact:

T: 1 (888) 4PTGLAB (1-888-478-4522) (toll free in USA), or 1(312) 455-8498 (outside USA)

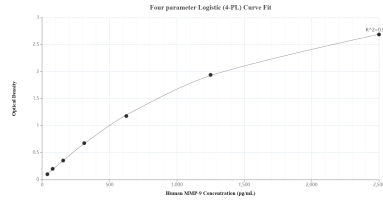
E: proteintech@ptglab.com
W: ptglab.com

This product is exclusively available under Proteintech Group brand and is not available to purchase from any other manufacturer.

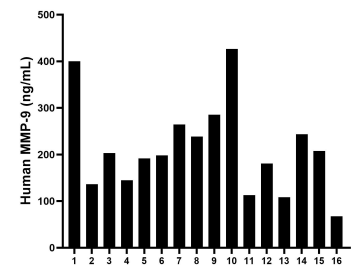
Selected Validation Data



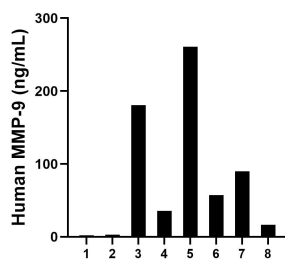
Cytometric bead array standard curve of MP01003-2, MMP-9 Recombinant Matched Antibody Pair, PBS Only. Capture antibody: 82685-18-PBS. Detection antibody: 82685-16-PBS. Standard: Eg0442. Range: 0.625-80 ng/mL



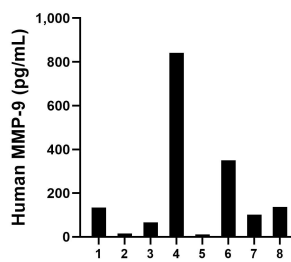
Sandwich ELISA standard curve of MP01003-2, Human MMP-9 Recombinant Matched Antibody Pair - PBS only. 82685-18-PBS was coated to a plate as the capture antibody and incubated with serial dilutions of standard Eg0442. 82685-16-PBS was HRP conjugated as the detection antibody. Range: 39-2500 pg/mL



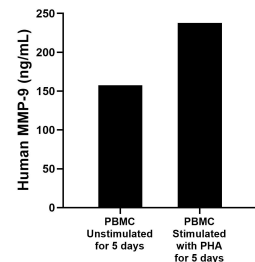
Serum of sixteen individual healthy human donors was measured. The MMP-9 concentration of detected samples was determined to be 213.0 ng/mL with a range of 67.5 - 426.4 ng/mL



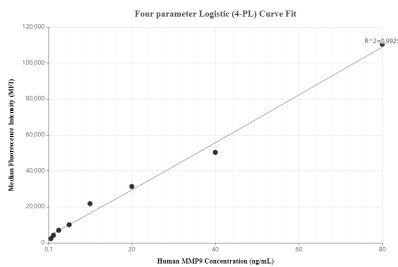
Saliva of eight individual healthy human donors was measured. The MMP-9 concentration of detected samples was determined to be 80.7 ng/mL with a range of 1.9 - 260.9 ng/mL



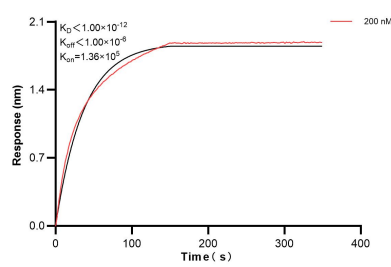
Urine of eight individual healthy human donors was measured. The MMP-9 concentration of detected samples was determined to be 207.3 pg/mL with a range of 11.4 - 841.8 pg/mL



Human peripheral blood mononuclear cells (PBMC) were cultured unstimulated or stimulated with 10 μ g/mL PHA for 5 days. The mean MMP-9 concentration was determined to be 157.3 ng/mL in unstimulated PBMC supernatant, 237.9 ng/mL in PHA stimulated PBMC supernatant.



Cytometric bead array standard curve of MP01003-1, MMP-9 Recombinant Matched Antibody Pair, PBS Only. Capture antibody: 82685-18-PBS. Detection antibody: 82685-19-PBS. Standard: Eg0442. Range: 0.625-80 ng/mL



Biolayer interferometry (BLI) kinetic assay of 82685-18-PBS against Human MMP-9 was performed. The affinity constant is below 1 pM.