

For Research Use Only

# SREBF1 Recombinant antibody, PBS Only

Catalog Number: 82684-3-PBS

Featured Product



## Basic Information

**Catalog Number:**

82684-3-PBS

**Size:**

100ug, Concentration: 1mg/ml by Nanodrop;

**Source:**

Rabbit

**Isotype:**

IgG

**Immunogen Catalog Number:**

AG5219

**GenBank Accession Number:**

BC063281

**GeneID (NCBI):**

6720

**UNIPROT ID:**

P36956

**Full Name:**

sterol regulatory element binding transcription factor 1

**Calculated MW:**

1177 aa, 125 kDa

**Observed MW:**

68 kDa, 125 kDa

**Purification Method:**

Protein A purification

**CloneNo.:**

1P4

## Applications

**Tested Applications:**

WB, FC (Intra), Indirect ELISA

**Species Specificity:**

human

## Background Information

SREBF1, also named as BHLHD1 and SREBP1, contains one basic helix-loop-helix (bHLH) domain and belongs to the SREBP family. It is a transcriptional activator required for lipid homeostasis. The SREBPs are synthesized as precursors anchored to endoplasmic reticulum (ER) membranes and complexed with SCAP. When the cellular cholesterol level is low, SREBP-SCAP complexes move to the Golgi apparatus, where SREBPs undergo a two-step proteolytic processing, leading to the release of the mature form, an N-terminal fragment, i.e, basic helix-loop-helix leucine zipper transcription factor. These factors enter the nucleus where they bind to sterol regulatory elements (SRE) in the promoter regions of a number of genes whose products mediate the synthesis of cholesterol and fatty acids. [PMID: 21698267].

## Storage

**Storage:**

Store at -80°C.

**Storage Buffer:**

PBS Only

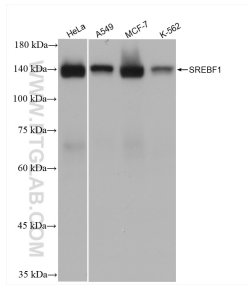
For technical support and original validation data for this product please contact:

T: 1 (888) 4PTGLAB (1-888-478-4522) (toll free in USA), or 1(312) 455-8498 (outside USA)

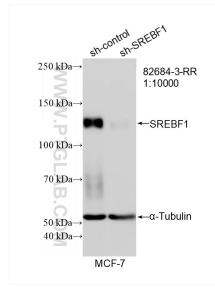
E: [proteintech@ptglab.com](mailto:proteintech@ptglab.com)  
W: [ptglab.com](http://ptglab.com)

**This product is exclusively available under Proteintech Group brand and is not available to purchase from any other manufacturer.**

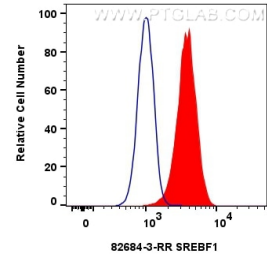
## Selected Validation Data



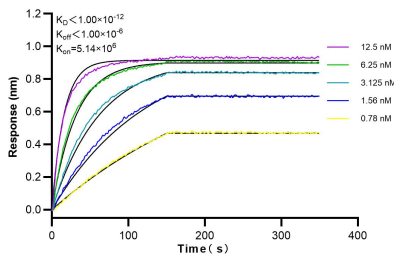
HeLa cells were subjected to SDS PAGE followed by western blot with 82684-3-RR (SREBF 1 antibody) at dilution of 1:4000 incubated at room temperature for 1.5 hours. This data was developed using the same antibody clone with 82684-3-PBS in a different storage buffer formulation.



WB result of SREBF 1 antibody (82684-3-RR; 1:10000; incubated at room temperature for 1.5 hours) with sh-Control and sh-SREBF1 transfected MCF-7 cells. This data was developed using the same antibody clone with 82684-3-PBS in a different storage buffer formulation.



1x10<sup>6</sup> HepG2 cells were intracellularly stained with 0.25 ug SREBF1 Recombinant antibody (82684-3-RR, Clone:1P4) and CoraLite®488-Conjugated AffiniPure Goat Anti-Rabbit IgG(H+L) (SA00013-2) (red), or 0.25 ug Isotype Control (blue). Cells were fixed with 4% PFA and permeabilized with Flow Cytometry Perm Buffer (PF00011-C). This data was developed using the same antibody clone with 82684-3-PBS in a different storage buffer formulation.



Biolayer interferometry (BLI) kinetic assays of 82684-3-RR against Human SREBF1 were performed. The affinity constant is below 1 pM.