

For Research Use Only

# HRAS-Specific Recombinant antibody, PBS Only (Capture)

Catalog Number:82682-11-PBS



## Basic Information

<b>Catalog Number:</b> 82682-11-PBS	<b>GenBank Accession Number:</b> BC006499	<b>Purification Method:</b> Protein A purification
<b>Size:</b> 100ug , Concentration: 1 mg/ml by Nanodrop;	<b>GeneID (NCBI):</b> 3265	<b>CloneNo.:</b> 242062B5
<b>Source:</b> Rabbit	<b>UNIPROT ID:</b> P01112	
<b>Isotype:</b> IgG	<b>Full Name:</b> v-Ha-ras Harvey rat sarcoma viral oncogene homolog	
	<b>Calculated MW:</b> 21 kDa	

## Applications

**Tested Applications:**  
Sandwich ELISA, Indirect ELISA, Sample test

**Species Specificity:**  
human

## Product Information

82682-11-PBS targets HRAS-Specific as part of a matched antibody pair:

MP01568-1: 82682-11-PBS capture and 82682-10-PBS detection (validated in Sandwich ELISA)

Unconjugated rabbit recombinant monoclonal antibody in PBS only (BSA and azide free) storage buffer at a concentration of 1 mg/mL, ready for conjugation. Created using Proteintech's proprietary in-house recombinant technology. Recombinant production enables unrivalled batch-to-batch consistency, easy scale-up, and future security of supply.

This conjugation ready format makes antibodies ideal for use in many applications including: ELISAs, multiplex assays requiring matched pairs, mass cytometry, and multiplex imaging applications. Antibody use should be optimized by the end user for each application and assay.

## Storage

**Storage:**  
Store at -80°C.

**Storage Buffer:**  
PBS Only

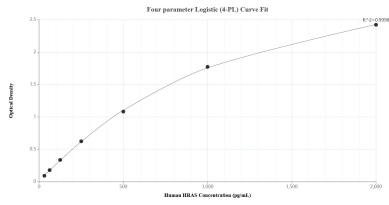
For technical support and original validation data for this product please contact:

T: 1 (888) 4PTGLAB (1-888-478-4522) (toll free  
in USA), or 1(312) 455-8498 (outside USA)

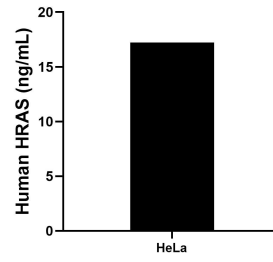
E: proteintech@ptglab.com  
W: ptglab.com

**This product is exclusively available under Proteintech Group brand and is not available to purchase from any other manufacturer.**

## Selected Validation Data



Sandwich ELISA standard curve of MP01568-1, Human HRAS Recombinant Matched Antibody Pair - PBS only. 82682-11-PBS was coated to a plate as the capture antibody and incubated with serial dilutions of standard SY00167. 82682-10-PBS was HRP conjugated as the detection antibody. Range: 31.3-2000 pg/mL.



The mean HRAS concentration was determined to be 17.2 ng/mL in HeLa cell extract based on a 1.3 mg/mL extract load.