

For Research Use Only

# GCLM Recombinant antibody, PBS Only

Catalog Number: 82623-1-PBS

Featured Product



## Basic Information

Catalog Number:

82623-1-PBS

Size:

100ug, Concentration: 1mg/ml by Nanodrop;

Source:

Rabbit

Isotype:

IgG

Immunogen Catalog Number:

AG5497

GenBank Accession Number:

BC041809

GeneID (NCBI):

2730

UNIPROT ID:

P48507

Full Name:

glutamate-cysteine ligase, modifier subunit

Calculated MW:

31 kDa

Observed MW:

31 kDa

Purification Method:

Protein A purification

CloneNo.:

4K16

## Applications

Tested Applications:

WB, IHC, Indirect ELISA

Species Specificity:

human, mouse, rat

## Background Information

GCLM (Glutamate--cysteine ligase regulatory subunit) is also named as GLCLR and belongs to the aldo/keto reductase family. It catalyzes the first step of GSH synthesis and is involved in gamma-glutamyl cycle. GCLM is implicated in some forms of hemolytic anemia.

## Storage

Storage:

Store at -80°C.

Storage Buffer:

PBS Only

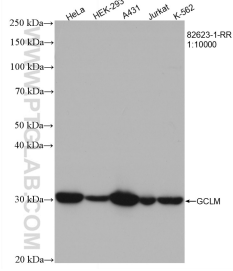
For technical support and original validation data for this product please contact:

T: 1 (888) 4PTGLAB (1-888-478-4522) (toll free in USA), or 1(312) 455-8498 (outside USA)

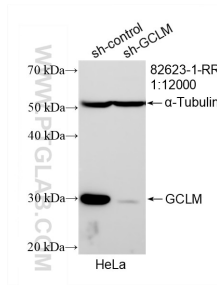
E: [proteintech@ptglab.com](mailto:proteintech@ptglab.com)  
W: [ptglab.com](http://ptglab.com)

This product is exclusively available under Proteintech Group brand and is not available to purchase from any other manufacturer.

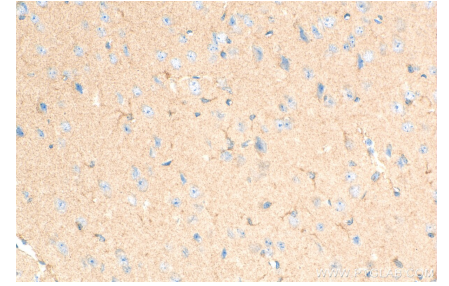
## Selected Validation Data



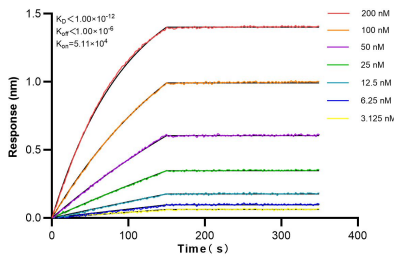
Various lysates were subjected to SDS PAGE followed by western blot with 82623-1-RR (GCLM antibody) at dilution of 1:10000 incubated at room temperature for 1.5 hours. This data was developed using the same antibody clone with 82623-1-PBS in a different storage buffer formulation.



WB result of GCLM antibody (82623-1-RR; 1:12000; incubated at room temperature for 1.5 hours) with sh-Control and sh-GCLM transfected HeLa cells. This data was developed using the same antibody clone with 82623-1-PBS in a different storage buffer formulation.



Immunohistochemical analysis of paraffin-embedded mouse brain tissue slide using 82623-1-RR (GCLM antibody) at dilution of 1:1000 (under 40x lens). Heat mediated antigen retrieval with Tris-EDTA buffer (pH 9.0). This data was developed using the same antibody clone with 82623-1-PBS in a different storage buffer formulation.



Biolayer interferometry (BLI) kinetic assays of 82623-1-RR against Human GCLM were performed. The affinity constant is below 1 pM.