

For Research Use Only

# Phospho-TAU (Ser202/Thr205) Recombinant antibody, PBS Only



Catalog Number: 82568-1-PBS

## Basic Information

**Catalog Number:**

82568-1-PBS

**Size:**

100ug, Concentration: 1 mg/ml by  
Nanodrop;

**Source:**

Rabbit

**Isotype:**

IgG

**GenBank Accession Number:**

BC000558

**GeneID (NCBI):**

4137

**UNIPROT ID:**

P10636

**Full Name:**

microtubule-associated protein tau

**Calculated MW:**

37-46, 79-81 kDa

**Observed MW:**

45-55 kDa

**Purification Method:**

Protein A purification

**CloneNo.:**

4A6

## Applications

**Tested Applications:**

WB, Indirect ELISA

**Species Specificity:**

Human, Mouse

## Background Information

Tau (tubulin-associated unit) is a microtubule-associated protein (also known as MAPT), expressed mainly in neurons of the central nervous system. Its primary function is to modulate microtubule dynamics for maintaining axonal cytoskeleton. The Tau protein has six isoforms produced from a single gene through alternative RNA splicing. Isoforms differ in number of inserts at the N-terminal half and the number of repeats at the C-terminal half (3 repeat-3R; 4 repeat-4R). Tau is hyperphosphorylated during aging and in age-related neurodegenerative diseases such as Alzheimer's disease (AD) and fronto-temporal dementia. Hyperphosphorylation of Tau leads to the formation of neurofibrillary tangles (NFT) in the neurons and glia cells, which is one of the hallmarks of AD.

## Storage

**Storage:**

Store at -80°C.

**Storage Buffer:**

PBS Only

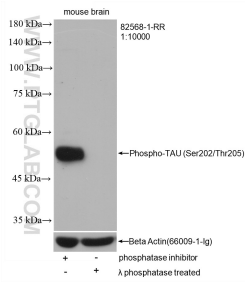
For technical support and original validation data for this product please contact:

T: 1 (888) 4PTGLAB (1-888-478-4522) (toll free  
in USA), or 1(312) 455-8498 (outside USA)

E: [proteintech@ptglab.com](mailto:proteintech@ptglab.com)  
W: [ptglab.com](http://ptglab.com)

**This product is exclusively available under Proteintech Group brand and is not available to purchase from any other manufacturer.**

## Selected Validation Data



Phosphatase inhibitor treated and  $\lambda$  phosphatase treated mouse brain tissue were subjected to SDS PAGE followed by western blot with 82568-1-RR (Phospho-TAU (Ser202/Thr205) antibody) at dilution of 1:10000 incubated at room temperature for 1 hours. The membrane was stripped and re-blotted with Beta Actin antibody as loading control. This data was developed using the same antibody clone with 82568-1-PBS in a different storage buffer formulation.