

For Research Use Only

# Phospho-EIF4B (Ser422) Recombinant antibody, PBS Only



Catalog Number: 82550-1-PBS

## Basic Information

<b>Catalog Number:</b> 82550-1-PBS	<b>GenBank Accession Number:</b> BC073154	<b>Purification Method:</b> Protein A purification
<b>Size:</b> 100ug , Concentration: 1 mg/ml by Nanodrop;	<b>GeneID (NCBI):</b> 1975	<b>CloneNo.:</b> 1K3
<b>Source:</b> Rabbit	<b>UNIPROT ID:</b> P23588	
<b>Isotype:</b> IgG	<b>Full Name:</b> eukaryotic translation initiation factor 4B	
	<b>Calculated MW:</b> 611 aa, 69 kDa	
	<b>Observed MW:</b> 70-80 kDa	

## Applications

**Tested Applications:**  
WB, Indirect ELISA

**Species Specificity:**  
Human

## Background Information

EIF4B is one of the mammalian eukaryotic initiation factors (eIF) that are required for the ATP-dependent binding of mRNA to the 40 S ribosomal subunit, and the other EIF proteins are EIF4A, EIF4F. EIF4B is involved in translation of numerous proliferative or anti-apoptotic mRNAs with highly structured 5'UTR and subsequently affect cell growth and survival. It was reported that false expression and phosphorylation levels of EIF4B are involved in several tumors including breast cancer, cell lymphoblastic leukemia and diffuse large B-cell lymphoma (PMID: 26848623). Ser422 is regarded as the major modification site of EIF4B that is phosphorylated in response to amino-acid refeeding (PMID: 22750809).

## Storage

**Storage:**  
Store at -80°C.

**Storage Buffer:**  
PBS Only

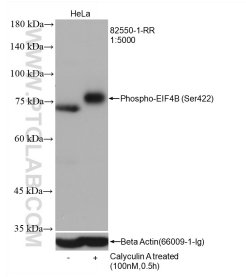
For technical support and original validation data for this product please contact:

T: 1 (888) 4PTGLAB (1-888-478-4522) (toll free  
in USA), or 1(312) 455-8498 (outside USA)

E: [proteintech@ptglab.com](mailto:proteintech@ptglab.com)  
W: [ptglab.com](http://ptglab.com)

**This product is exclusively available under Proteintech Group brand and is not available to purchase from any other manufacturer.**

## Selected Validation Data



Non-treated and Calyculin A treated HeLa cells were subjected to SDS PAGE followed by western blot with 82550-1-RR (Phospho-EIF4B (Ser422) antibody) at dilution of 1:5000 incubated at room temperature for 1.5 hours. The membrane was stripped and re-blotted with Beta Actin antibody as loading control. This data was developed using the same antibody clone with 82550-1-PBS in a different storage buffer formulation.