

For Research Use Only

Tim23 Recombinant antibody, PBS Only



Catalog Number: 82540-1-PBS

Basic Information

Catalog Number: 82540-1-PBS	GenBank Accession Number: BC062707	Purification Method: Protein A purification
Size: 100ug , Concentration: 1mg/ml by Nanodrop;	GeneID (NCBI): 10431	CloneNo.: 1H16
Source: Rabbit	UNIPROT ID: O14925	
Isotype: IgG	Full Name: translocase of inner mitochondrial membrane 23 homolog (yeast)	
Immunogen Catalog Number: AG1620	Calculated MW: 22 kDa	
	Observed MW: 22 kDa	

Applications

Tested Applications:
WB, IP, IHC, IF/ICC, Indirect ELISA

Species Specificity:
Human, mouse, rat

Background Information

Tim23, a key component of the mitochondrial preprotein translocase, is anchored in the inner membrane by its C-terminal domain and exposes an intermediate domain in the intermembrane space that functions as a presequence receptor. Tim23 is the main component of the translocation channel of the TIM23 complex. (PMID: 10830167, PMID: 25083920)

Storage

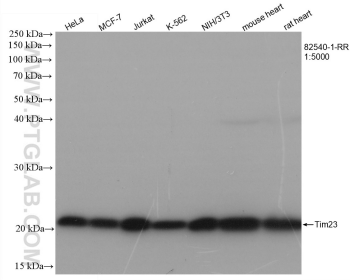
Storage:
Store at -80°C.

Storage Buffer:
PBS Only

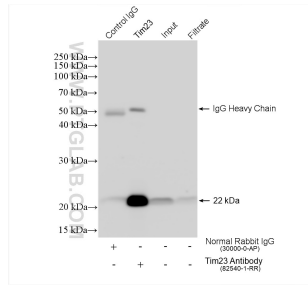
For technical support and original validation data for this product please contact:
T: 1 (888) 4PTGLAB (1-888-478-4522) (toll free in USA), or 1(312) 455-8498 (outside USA) E: proteintech@ptglab.com
W: ptglab.com

This product is exclusively available under Proteintech Group brand and is not available to purchase from any other manufacturer.

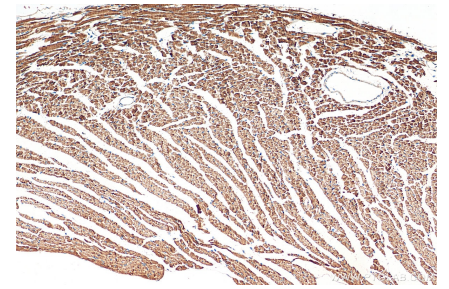
Selected Validation Data



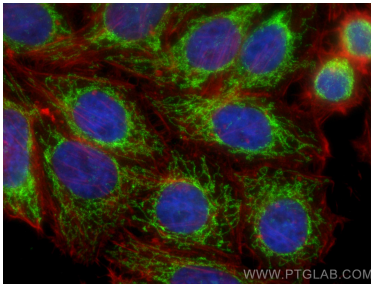
Various lysates were subjected to SDS PAGE followed by western blot with 82540-1-RR (Tim23 antibody) at dilution of 1:5000 incubated at room temperature for 1.5 hours. This data was developed using the same antibody clone with 82540-1-PBS in a different storage buffer formulation.



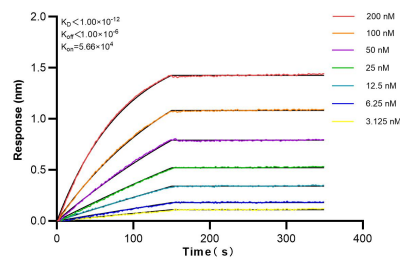
IP result of anti-Tim23 (IP:82540-1-RR, 4ug; Detection:82540-1-RR 1:1000) with HeLa cells lysate 1280 ug. This data was developed using the same antibody clone with 82540-1-PBS in a different storage buffer formulation.



Immunohistochemical analysis of paraffin-embedded mouse heart tissue slide using 82540-1-RR (Tim23 antibody) at dilution of 1:200 (under 10x lens). Heat mediated antigen retrieval with Tris-EDTA buffer (pH 9.0). This data was developed using the same antibody clone with 82540-1-PBS in a different storage buffer formulation.



Immunofluorescent analysis of (4% PFA) fixed HepG2 cells using Tim23 antibody (82540-1-RR, Clone: 1H16) at dilution of 1:500 and CoraLite@488-Conjugated AffiniPure Goat Anti-Rabbit IgG(H+L), CL594-Phalloidin (red). This data was developed using the same antibody clone with 82540-1-PBS in a different storage buffer formulation.



Biolayer interferometry (BLI) kinetic assays of 82540-1-RR against Human Tim23 were performed. The affinity constant is below 1 pM.