

For Research Use Only

S100A8 Recombinant monoclonal antibody

Catalog Number: 82531-3-RR



Basic Information

Catalog Number:

82531-3-RR

Size:

100ul, Concentration: 1000 µg/ml by Nanodrop;

Source:

Rabbit

Isotype:

IgG

Immunogen Catalog Number:

EG3752

GenBank Accession Number:

BC005928

GeneID (NCBI):

6279

UNIPROT ID:

P05109

Full Name:

S100 calcium binding protein A8

Calculated MW:

93 aa, 11 kDa

Observed MW:

11 kDa

Purification Method:

Protein A purification

CloneNo.:

242970G12

Recommended Dilutions:

WB: 1:1000-1:4000

IP: 0.5-4.0 µg for 1.0-3.0 mg of total protein lysate

IF/ICC: 1:50-1:500

Applications

Tested Applications:

WB, IF/ICC, IP, ELISA

Species Specificity:

human

Positive Controls:

WB : HL-60 cells, MCF-7 cells, SK-BR-3 cells

IP : MCF-7 cells, HL-60 cells

IF/ICC : THP-1 cells,

Background Information

S100A8 is a member of the S100 family of proteins containing 2 EF-hand calcium-binding motifs. S100 proteins are localized in the cytoplasm and/or nucleus of a wide range of cells, and involved in the regulation of a number of cellular processes such as cell cycle progression and differentiation. S100 genes include at least 13 members which are located as a cluster on chromosome 1q21. This protein may function in the inhibition of casein kinase and as a cytokine.

Storage

Storage:

Store at -20°C. Stable for one year after shipment.

Storage Buffer:

PBS with 0.02% sodium azide and 50% glycerol, pH7.3

Aliquoting is unnecessary for -20°C storage

*** 20ul sizes contain 0.1% BSA

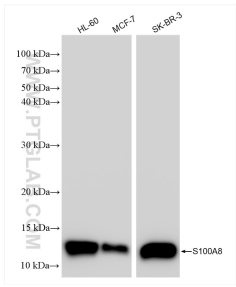
For technical support and original validation data for this product please contact:

T: 1 (888) 4PTGLAB (1-888-478-4522) (toll free in USA), or 1(312) 455-8498 (outside USA)

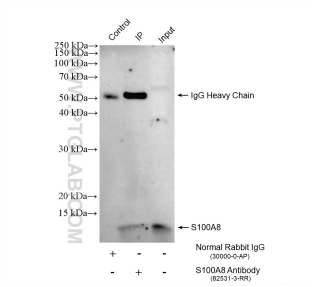
E: proteintech@ptglab.com
W: ptglab.com

This product is exclusively available under Proteintech Group brand and is not available to purchase from any other manufacturer.

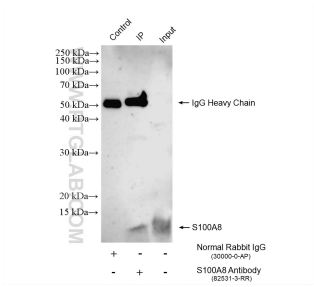
Selected Validation Data



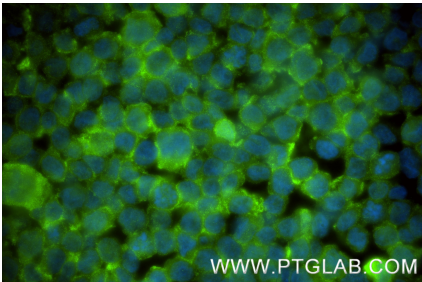
Various lysates were subjected to SDS PAGE followed by western blot with 82531-3-RR (S100A8 antibody) at dilution of 1:2000 incubated at room temperature for 1.5 hours.



IP result of anti-S100A8 (IP:82531-3-RR, 4ug; Detection:82531-3-RR 1:600) with MCF-7 cells lysate 1400 ug.



IP result of anti-S100A8 (IP:82531-3-RR, 4ug; Detection:82531-3-RR 1:600) with HL-60 cells lysate 1800 ug.



Immunofluorescent analysis of (4% PFA) fixed THP-1 cells using S100A8 antibody (82531-3-RR, Clone: 242970G12) at dilution of 1:200 and CoraLite®488-Conjugated Goat Anti-Rabbit IgG(H+L) (SA00013-2).