

For Research Use Only

# KIF5B Recombinant antibody, PBS Only

Catalog Number: 82485-1-PBS

Featured Product



## Basic Information

**Catalog Number:**

82485-1-PBS

**Size:**

100ug, Concentration: 1mg/ml by Nanodrop;

**Source:**

Rabbit

**Isotype:**

IgG

**Immunogen Catalog Number:**

AG16250

**GenBank Accession Number:**

BC126279

**GeneID (NCBI):**

3799

**UNIPROT ID:**

P33176

**Full Name:**

kinesin family member 5B

**Calculated MW:**

963 aa, 110 kDa

**Observed MW:**

110-120 kDa

**Purification Method:**

Protein A purification

**CloneNo.:**

2B18

## Applications

**Tested Applications:**

WB, IHC, IF/ICC, Indirect ELISA

**Species Specificity:**

human, mouse, rat

## Background Information

KIF5B, also known as KINH, KNS1, belongs to the Kinesin-1 family. KIF5B contains three structural domains: a globular N-terminal motor domain, a central alpha-helical rod domain, and a globular C-terminal domain. During the G2 phase of the cell cycle in a BICD2-dependent manner, KIF5B antagonizes the dynein function and drives the separation of nuclei and centrosomes (PMID: 20386726). KIF5B drives the polarization of cytoplasmic granules and microtubule-organizing centers (MTOCs) toward the immune synapse between effector NK lymphocytes and target cells (KIF5B:24088571).

## Storage

**Storage:**

Store at -80°C.

**Storage Buffer:**

PBS Only

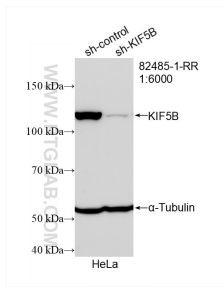
For technical support and original validation data for this product please contact:

T: 1 (888) 4PTGLAB (1-888-478-4522) (toll free in USA), or 1(312) 455-8498 (outside USA)

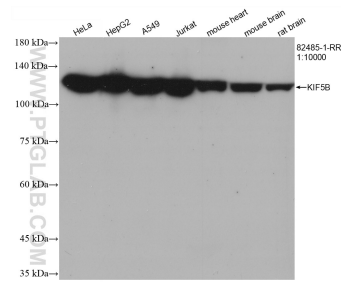
E: [proteintech@ptglab.com](mailto:proteintech@ptglab.com)  
W: [ptglab.com](http://ptglab.com)

This product is exclusively available under Proteintech Group brand and is not available to purchase from any other manufacturer.

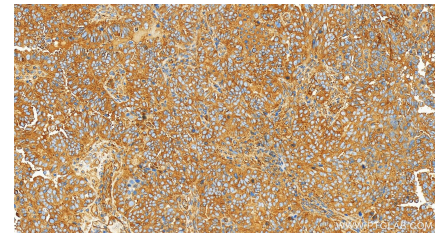
## Selected Validation Data



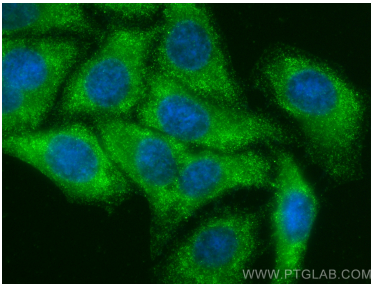
WB result of KIF5B antibody (82485-1-RR; 1:6000; incubated at room temperature for 1.5 hours) with sh-Control and sh-KIF5B transfected HeLa cells. This data was developed using the same antibody clone with 82485-1-PBS in a different storage buffer formulation.



Various lysates were subjected to SDS PAGE followed by western blot with 82485-1-RR (KIF5B antibody) at dilution of 1:10000 incubated at room temperature for 1.5 hours. This data was developed using the same antibody clone with 82485-1-PBS in a different storage buffer formulation.



Immunohistochemical analysis of paraffin-embedded human ovarian cancer slide using 82485-1-RR (KIF5B antibody) at dilution of 1:1000 (under 20x lens). Heat mediated antigen retrieval with Tris-EDTA buffer (pH 9.0). This data was developed using the same antibody clone with 82485-1-PBS in a different storage buffer formulation.



Immunofluorescent analysis of (-20°C Ethanol) fixed HepG2 cells using KIF5B antibody (82485-1-RR, Clone: 2B18) at dilution of 1:200 and Multi-rAb CoraLite® Plus 488-Goat Anti-Rabbit Recombinant Secondary Antibody (H+L) (RGAR002). This data was developed using the same antibody clone with 82485-1-PBS in a different storage buffer formulation.