

For Research Use Only

CUL1 Recombinant antibody, PBS Only



Catalog Number: 82474-1-PBS

Basic Information

Catalog Number: 82474-1-PBS	GenBank Accession Number: BC034318	Purification Method: Protein A purification
Size: 100ug , Concentration: 1mg/ml by Nanodrop;	GeneID (NCBI): 8454	CloneNo.: 5K17
Source: Rabbit	UNIPROT ID: Q13616	
Isotype: IgG	Full Name: cullin 1	
Immunogen Catalog Number: AG3585	Calculated MW: 90 kDa	
	Observed MW: 90 kDa	

Applications

Tested Applications:
Indirect ELISA, IP, WB

Species Specificity:
Human, rat, mouse

Background Information

The cullin family proteins are scaffold proteins for the Ring finger type E3 ligases. Humans express seven cullin proteins: CUL1-3, CUL4A, CUL4B, CUL5, and CUL7. Each cullin protein can form an E3 ligase similar to the prototype Ring-type E3 ligase Skp1-CUL1-F-box complex. The Cullin-RING-finger type E3 ligases are important regulators in early embryonic development, as highlighted by genetic studies demonstrating that knock-out of CUL1, CUL3, or CUL4A in mice results in early embryonic lethality.

Storage

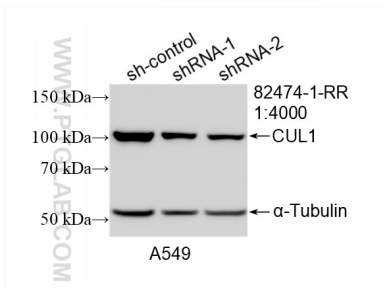
Storage:
Store at -80°C.

Storage Buffer:
PBS Only

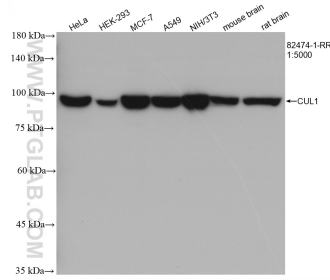
For technical support and original validation data for this product please contact:
T: 1 (888) 4PTGLAB (1-888-478-4522) (toll free in USA), or 1(312) 455-8498 (outside USA) E: proteintech@ptglab.com
W: ptglab.com

This product is exclusively available under Proteintech Group brand and is not available to purchase from any other manufacturer.

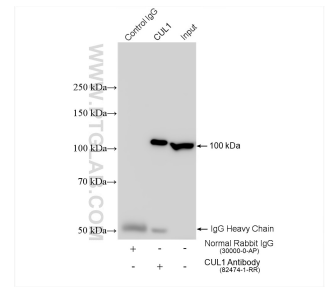
Selected Validation Data



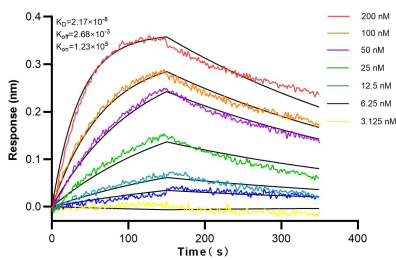
WB result of CUL1 antibody (82474-1-RR; 1:4000; incubated at room temperature for 1.5 hours) with sh-Control and sh-CUL1 transfected A549 cells. This data was developed using the same antibody clone with 82474-1-PBS in a different storage buffer formulation.



Various lysates were subjected to SDS PAGE followed by western blot with 82474-1-RR (CUL1 antibody) at dilution of 1:5000 incubated at room temperature for 1.5 hours. This data was developed using the same antibody clone with 82474-1-PBS in a different storage buffer formulation.



IP result of anti-CUL1 (IP:82474-1-RR, 4ug; Detection:82474-1-RR 1:1000) with HeLa cells lysate 1280 ug. This data was developed using the same antibody clone with 82474-1-PBS in a different storage buffer formulation.



Bi-layer interferometry (BLI) kinetic assays of 82474-1-RR against Human CUL1 were performed. The affinity constant is 21.7 nM.