

For Research Use Only

Bcl2 Recombinant antibody

Catalog Number:82469-6-RR



Basic Information

Catalog Number: 82469-6-RR	GenBank Accession Number: NM-009741	Purification Method: Protein A purification
Size: 100ul , Concentration: 1000 ug/ml by Nanodrop;	GeneID (NCBI): 12043	CloneNo.: 240571H5
Source: Rabbit	UNIPROT ID: P10417	Recommended Dilutions: WB 1:2000-1:10000
Isotype: IgG	Full Name: B-cell leukemia/lymphoma 2	
Immunogen Catalog Number: AG24260	Calculated MW: 26 kDa	
	Observed MW: 26 kDa	

Applications

Tested Applications: WB, FC (Intra), ELISA	Positive Controls: WB : mouse kidney tissue, mouse spleen tissue, mouse heart tissue
Species Specificity: mouse	

Background Information

Bcl2 is a member of the B cell lymphoma 2 protein family. Members of this family regulate cell death in multiple cell types and can have either proapoptotic or antiapoptotic activities. The protein encoded by this gene inhibits mitochondrial-mediated apoptosis. This protein is an integral outer mitochondrial membrane protein that functions as part of signaling pathway that controls mitochondrial permeability in response to apoptotic stimuli. This protein may also play a role in neuron cell survival and autophagy. Abnormal expression and chromosomal translocations of this gene are associated with cancer progression in numerous tissues.

Storage

Storage:
Store at -20°C. Stable for one year after shipment.
Storage Buffer:
PBS with 0.02% sodium azide and 50% glycerol pH 7.3.
Aliquoting is unnecessary for -20°C storage

*** 20ul sizes contain 0.1% BSA

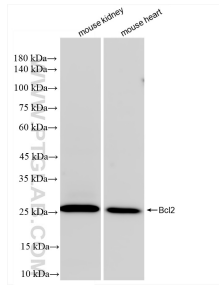
For technical support and original validation data for this product please contact:

T: 1 (888) 4PTGLAB (1-888-478-4522) (toll free in USA), or 1(312) 455-8498 (outside USA)

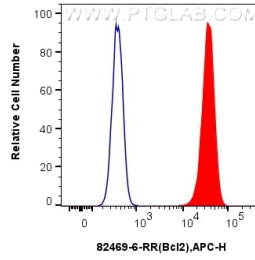
E: proteintech@ptglab.com
W: ptglab.com

This product is exclusively available under Proteintech Group brand and is not available to purchase from any other manufacturer.

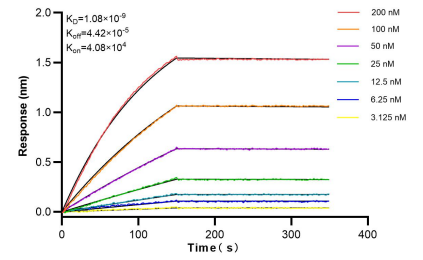
Selected Validation Data



Various lysates were subjected to SDS PAGE followed by western blot with 82469-6-RR (Bcl2 antibody) at dilution of 1:5000 incubated at room temperature for 1.5 hours.



1×10^6 NIH/3T3 cells were intracellularly stained with 0.25 μ g Bcl2 Recombinant antibody (82469-6-RR, Clone:240571H5) and APC-Conjugated AffiniPure Goat Anti-Rabbit IgG(H+L)(red), or 0.25 μ g Isotype Control (blue). Cells were fixed with 4% PFA and permeabilized with Flow Cytometry Perm Buffer (PF00011-C).



Biacore BLI kinetic assays of 82469-6-RR against Mouse Bcl2 were performed. The affinity constant is 1.08 nM.