

For Research Use Only

# Phospho-TBK1 (Ser172) Recombinant antibody

Catalog Number: 82382-2-RR



## Basic Information

Catalog Number:

82382-2-RR

Size:

100ul, Concentration: 1000 µg/ml by Nanodrop;

Source:

Rabbit

Isotype:

IgG

GenBank Accession Number:

BC034950

GeneID (NCBI):

29110

UNIPROT ID:

Q9UHD2

Full Name:

TANK-binding kinase 1

Observed MW:

84 kDa

Purification Method:

Protein A purification

CloneNo.:

241787G12

Recommended Dilutions:

WB 1:500-1:2000

## Applications

Tested Applications:

WB, ELISA

Species Specificity:

human

Positive Controls:

WB : Calyculin A treated HeLa cells,

## Background Information

The serine/threonine protein kinase TBK1, discovered two decades ago as a member of the I $\kappa$ B kinase (IKK) protein kinase family, plays crucial roles in regulating innate immune response by promoting type I interferon (IFN) and modulating NF- $\kappa$ B signaling. The phosphorylation of Ser172 residue on TBK1 is critical and is commonly used as an indicator for its activity. (PMID: 39279883)

## Storage

Storage:

Store at -20°C. Stable for one year after shipment.

Storage Buffer:

PBS with 0.02% sodium azide and 50% glycerol pH 7.3.

Aliquoting is unnecessary for -20°C storage

\*\*\* 20ul sizes contain 0.1% BSA

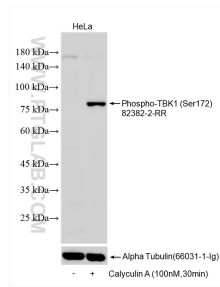
For technical support and original validation data for this product please contact:

T: 1 (888) 4PTGLAB (1-888-478-4522) (toll free in USA), or 1(312) 455-8498 (outside USA)

E: [proteintech@ptglab.com](mailto:proteintech@ptglab.com)  
W: [ptglab.com](http://ptglab.com)

This product is exclusively available under Proteintech Group brand and is not available to purchase from any other manufacturer.

## Selected Validation Data



Non-treated and Calyculin A treated HeLa cells were subjected to SDS PAGE followed by western blot with 82382-2-RR (Phospho-TBK1 (Ser172) antibody) at dilution of 1:1000 incubated at room temperature for 1.5 hours. The membrane was stripped and re-blotted with Alpha Tubulin (66031-1-Ig) antibody as a loading control.