

For Research Use Only

ATF6 Recombinant antibody, PBS Only



Catalog Number: 82278-1-PBS

Basic Information

Catalog Number: 82278-1-PBS	GenBank Accession Number: BC014969	Purification Method: Protein A purification
Size: 100ug, Concentration: 1mg/ml by Nanodrop;	GeneID (NCBI): 22926	CloneNo.: 208
Source: Rabbit	UNIPROT ID: P18850	
Isotype: IgG	Full Name: activating transcription factor 6	
Immunogen Catalog Number: AG21456	Calculated MW: 75 kDa	
	Observed MW: 90-100 kDa	

Applications

Tested Applications:
WB, IP, Indirect ELISA

Species Specificity:
human

Background Information

Activating transcription factor 6 (ATF6) is a transcription factor that acts during endoplasmic reticulum stress by activating unfolded protein response target genes. Binds DNA on the 5'-CCAC[GA]-3' half of the ER stress response element (ERSE) (5'-CCAAT-N(9)-CCAC[GA]-3') and of ERSE II (5'-ATTGG-N-CCACG-3'). Binding to ERSE requires binding of NF-Y to ERSE. Could also be involved in activation of transcription by the serum response factor. During unfolded protein response an approximative 50 kDa fragment containing the cytoplasmic transcription factor domain is released by proteolysis. The cleavage seems to be performed sequentially by site-1 and site-2 proteases. The fully glycosylated form of ATF6, a 670 amino acid protein, exhibits an electrophoretic mobility of ~90 kDa in denaturing SDS-gels, in part because of the glycosylated modifications. ATF6 has 3 consensus sites for N-linked glycosylation and exists constitutively as a glycosylated protein. Differentially glycosylated ATF6 forms may result from mutations or experimental treatment (PMID:15804611) (PMID:14699159).

Storage

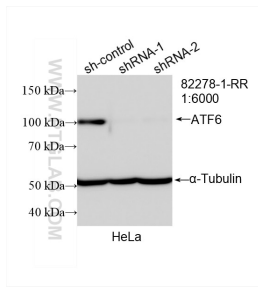
Storage:
Store at -80°C.

Storage Buffer:
PBS Only

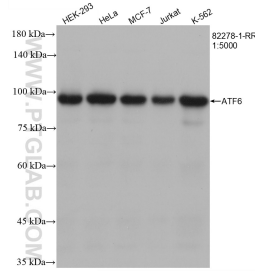
For technical support and original validation data for this product please contact:
T: 1 (888) 4PTGLAB (1-888-478-4522) (toll free in USA), or 1(312) 455-8498 (outside USA) E: proteintech@ptglab.com
W: ptglab.com

This product is exclusively available under Proteintech Group brand and is not available to purchase from any other manufacturer.

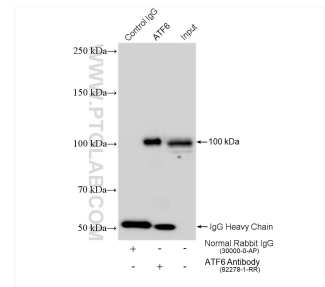
Selected Validation Data



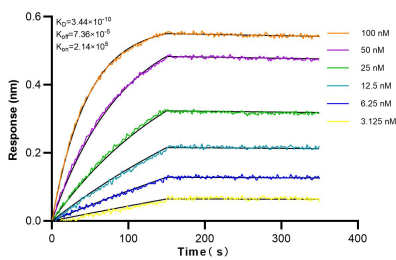
WB result of ATF6 antibody (82278-1-RR; 1:6000; incubated at room temperature for 1.5 hours) with sh-Control and sh-ATF6 transfected HeLa cells. This data was developed using the same antibody clone with 82278-1-PBS in a different storage buffer formulation.



Various lysates were subjected to SDS PAGE followed by western blot with 82278-1-RR (ATF6 antibody) at dilution of 1:5000 incubated at room temperature for 1.5 hours. This data was developed using the same antibody clone with 82278-1-PBS in a different storage buffer formulation.



IP result of anti-ATF6 (IP:82278-1-RR, 4ug; Detection:82278-1-RR 1:2000) with HeLa cells lysate 1280 ug. This data was developed using the same antibody clone with 82278-1-PBS in a different storage buffer formulation.



Biolayer interferometry (BLI) kinetic assays of 82278-1-RR against Human ATF6 were performed. The affinity constant is 0.344 nM.