

For Research Use Only

G3BP2 Recombinant antibody, PBS Only (Detector)

Catalog Number: 82080-2-PBS



Basic Information

Catalog Number: 82080-2-PBS	GenBank Accession Number: BC011731	Purification Method: Protein A purification
Size: 100ug, Concentration: 1mg/ml by Nanodrop;	GeneID (NCBI): 9908	CloneNo.: 230275B2
Source: Rabbit	UNIPROT ID: Q9UN86	
Isotype: IgG	Full Name: GTPase activating protein (SH3 domain) binding protein 2	
Immunogen Catalog Number: AG9355	Calculated MW: 482aa,54 kDa; 449aa,51 kDa	

Applications

Tested Applications:
Cytometric bead array, Sandwich ELISA, Indirect ELISA,
Sample test

Species Specificity:
human

Product Information

82080-2-PBS targets G3BP2 as part of a matched antibody pair:

MP00090-3: 82080-4-PBS capture and 82080-2-PBS detection (validated in Cytometric bead array, Sandwich ELISA)

Unconjugated rabbit recombinant monoclonal antibody in PBS only (BSA and azide free) storage buffer at a concentration of 1 mg/mL, ready for conjugation. Created using Proteintech's proprietary in-house recombinant technology. Recombinant production enables unrivalled batch-to-batch consistency, easy scale-up, and future security of supply.

This conjugation ready format makes antibodies ideal for use in many applications including: ELISAs, multiplex assays requiring matched pairs, mass cytometry, and multiplex imaging applications. Antibody use should be optimized by the end user for each application and assay.

Storage

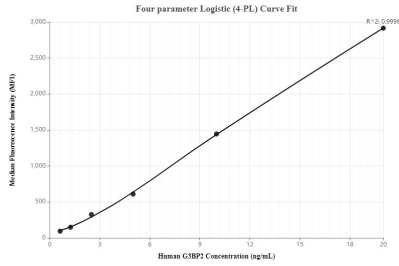
Storage:
Store at -80°C.

Storage Buffer:
100% PBS pH 7.3

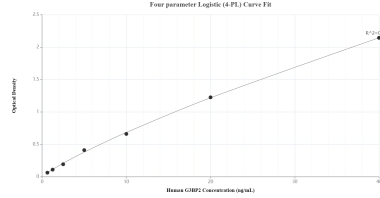
For technical support and original validation data for this product please contact:
T: 1 (888) 4PTGLAB (1-888-478-4522) (toll free in USA), or 1(312) 455-8498 (outside USA) E: proteintech@ptglab.com
W: ptglab.com

This product is exclusively available under Proteintech Group brand and is not available to purchase from any other manufacturer.

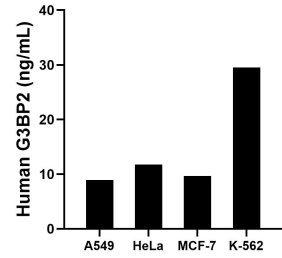
Selected Validation Data



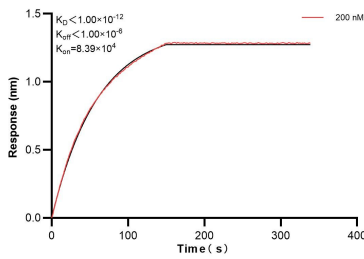
Cytometric bead array standard curve of MP00090-3, G3BP2 Recombinant Matched Antibody Pair, PBS Only. Capture antibody: 82080-4-PBS. Detection antibody: 82080-2-PBS. Standard: Ag9355. Range: 0.625-20 ng/mL



Sandwich ELISA standard curve of MP00090-3, Human G3BP2 Recombinant Matched Antibody Pair - PBS only. 82080-4-PBS was coated to a plate as the capture antibody and incubated with serial dilutions of standard Ag9355. 82080-2-PBS was HRP conjugated as the detection antibody. Range: 0.625-40 ng/mL



The mean G3BP2 concentration was determined to be 8.91 ng/mL in A549 cell extract based on a 2.20 mg/mL extract load, 11.75 ng/mL in HeLa cell extract based on a 3.20 mg/mL extract load, 9.66 ng/mL in MCF-7 cell extract based on a 4.30 mg/mL extract load and 29.51 ng/mL in K-562 cell extract based on a 4.50 mg/mL extract load.



Biolayer interferometry (BLI) kinetic assay of 82080-2-PBS against Human G3BP2 was performed. The affinity constant is below 1 pM.