

For Research Use Only

ZEB2 Recombinant antibody, PBS Only

Catalog Number: 82020-1-PBS



Basic Information

| | | |
|--|---|---|
| Catalog Number: 82020-1-PBS | GenBank Accession Number: BC060819 | Purification Method: Protein A purification |
| Size: 100ug, Concentration: 1 mg/ml by Nanodrop; | GeneID (NCBI): 9839 | CloneNo.: 1K22 |
| Source: Rabbit | UNIPROT ID: O60315 | |
| Isotype: IgG | Full Name: zinc finger E-box binding homeobox 2 | |
| Immunogen Catalog Number: AG5171 | Calculated MW: 136 kDa | |
| | Observed MW: 140-150 kD | |

Applications

Tested Applications:
WB, IHC, Indirect ELISA

Species Specificity:
Human

Background Information

Zinc finger E-box-binding homeobox (ZEB2) is a key transcription factor that acts as a multifunctional regulator during nervous system development. ZEB2 contains two zinc finger domains and a homeodomain-like sequence and interacts with the TGF- β superfamily signaling regulators, Smads, to regulate the expression of their downstream genes. ZEB2 is expressed in the developing neural tube, as well as in neural crest cells, the hippocampus and the cerebral cortex. ZEB2 has previously been implicated in EMT, cell-cycle progression, apoptosis and senescence. ZEB2 was overexpressed in bladder, ovarian, stomach, pancreatic and squamous cell carcinoma, in the intestinal subtype of stomach cancers, and at the invasive front of CRC where EMT is most prominent. ZEB2 also mediates cell-fate decision in neuronal, T cells and hematopoietic stem cells. PMID: 27659015)

Storage

Storage:
Store at -80°C.

Storage Buffer:
PBS Only

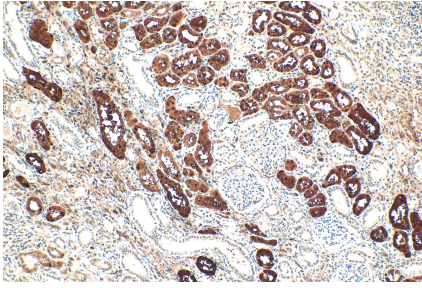
For technical support and original validation data for this product please contact:

T: 1 (888) 4PTGLAB (1-888-478-4522) (toll free in USA), or 1(312) 455-8498 (outside USA)

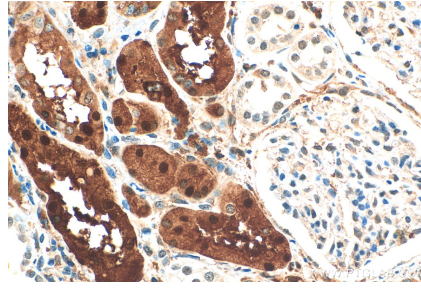
E: proteintech@ptglab.com
W: ptglab.com

This product is exclusively available under Proteintech Group brand and is not available to purchase from any other manufacturer.

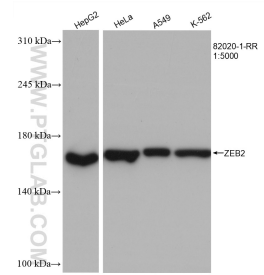
Selected Validation Data



Immunohistochemical analysis of paraffin-embedded human renal cell carcinoma tissue slide using 82020-1-RR (ZEB2 antibody) at dilution of 1:1200 (under 10x lens). Heat mediated antigen retrieval with Tris-EDTA buffer (pH 9.0). This data was developed using the same antibody clone with 82020-1-PBS in a different storage buffer formulation.



Immunohistochemical analysis of paraffin-embedded human renal cell carcinoma tissue slide using 82020-1-RR (ZEB2 antibody) at dilution of 1:1200 (under 40x lens). Heat mediated antigen retrieval with Tris-EDTA buffer (pH 9.0). This data was developed using the same antibody clone with 82020-1-PBS in a different storage buffer formulation.



Various lysates were subjected to SDS PAGE followed by western blot with 82020-1-RR (ZEB2 antibody) at dilution of 1:5000 incubated at room temperature for 1.5 hours. This data was developed using the same antibody clone with 82020-1-PBS in a different storage buffer formulation.