

For Research Use Only

# STAT1 Recombinant antibody, PBS Only

Catalog Number: 82016-1-PBS

Featured Product



## Basic Information

Catalog Number:

82016-1-PBS

Size:

100ug, Concentration: 1mg/ml by Nanodrop;

Source:

Rabbit

Isotype:

IgG

Immunogen Catalog Number:

AG0199

GenBank Accession Number:

BC002704

GeneID (NCBI):

6772

UNIPROT ID:

P42224

Full Name:

signal transducer and activator of transcription 1, 91kDa

Calculated MW:

83 kDa

Observed MW:

84 kDa

Purification Method:

Protein A purification

CloneNo.:

2F16

## Applications

Tested Applications:

WB, IHC, IF/ICC, IP, Indirect ELISA

Species Specificity:

human, mouse, rat

## Background Information

STAT1 (signal transducers and activators of transcription 1) is a member of the STAT protein family. In response to cytokines and growth factors, STAT family members are phosphorylated by the receptor associated kinases, and then form homo- or heterodimers that translocate to the cell nucleus where they act as transcription activators. Various ligands, including interferons- and -, EGF, PDGF and IL-6, can activate STAT1. STAT1 protein mediates the expression of a variety of genes, which is thought to be important for cell viability in response to different cell stimuli and pathogens.

## Storage

Storage:

Store at -80°C.

Storage Buffer:

PBS Only

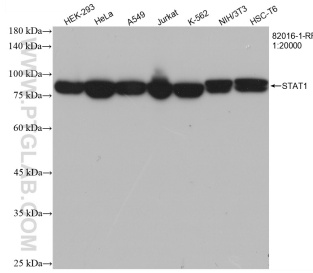
For technical support and original validation data for this product please contact:

T: 1 (888) 4PTGLAB (1-888-478-4522) (toll free in USA), or 1(312) 455-8498 (outside USA)

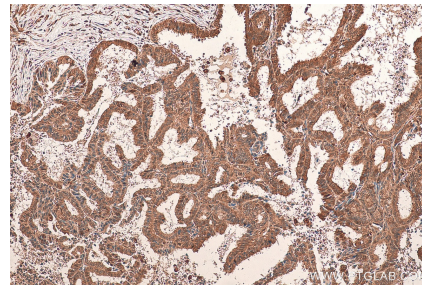
E: [proteintech@ptglab.com](mailto:proteintech@ptglab.com)  
W: [ptglab.com](http://ptglab.com)

This product is exclusively available under Proteintech Group brand and is not available to purchase from any other manufacturer.

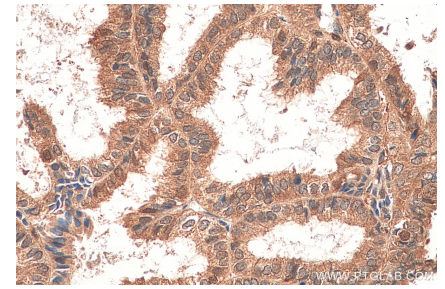
## Selected Validation Data



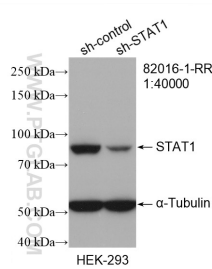
Various lysates were subjected to SDS PAGE followed by western blot with 82016-1-RR (STAT1 antibody) at dilution of 1:20000 incubated at room temperature for 1.5 hours. This data was developed using the same antibody clone with 82016-1-PBS in a different storage buffer formulation.



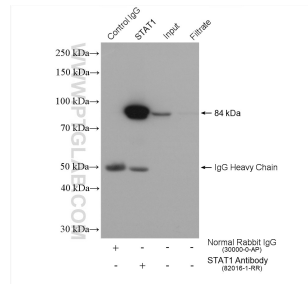
Immunohistochemical analysis of paraffin-embedded human ovary tumor tissue slide using 82016-1-RR (STAT1 antibody) at dilution of 1:400 (under 10x lens). Heat mediated antigen retrieval with Tris-EDTA buffer (pH 9.0). This data was developed using the same antibody clone with 82016-1-PBS in a different storage buffer formulation.



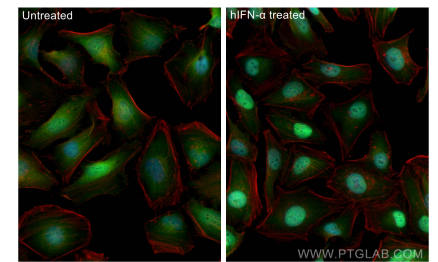
Immunohistochemical analysis of paraffin-embedded human ovary tumor tissue slide using 82016-1-RR (STAT1 antibody) at dilution of 1:400 (under 40x lens). Heat mediated antigen retrieval with Tris-EDTA buffer (pH 9.0). This data was developed using the same antibody clone with 82016-1-PBS in a different storage buffer formulation.



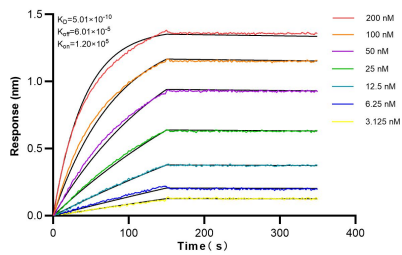
WB result of STAT1 antibody (82016-1-RR; 1:40000; incubated at room temperature for 1.5 hours) with sh-Control and sh-STAT1 transfected HEK-293 cells. This data was developed using the same antibody clone with 82016-1-PBS in a different storage buffer formulation.



IP result of anti-STAT1 (IP:82016-1-RR, 4ug; Detection:82016-1-RR 1:10000) with PC-3 cells lysate 2000 ug. This data was developed using the same antibody clone with 82016-1-PBS in a different storage buffer formulation.



Immunofluorescent analysis of (4% PFA) fixed IFN alpha treated HeLa cells using STAT1 antibody (82016-1-RR, Clone: 2F16 ) at dilution of 1:1000 and CoraLite@488-Conjugated Goat Anti-Rabbit IgG(H+L) (SA00013-2), CL594-phalloidin (red). This data was developed using the same antibody clone with 82016-1-PBS in a different storage buffer formulation.



Bi-layer interferometry (BLI) kinetic assays of 82016-1-RR against Human STAT1 were performed. The affinity constant is 0.501 nM.